

Recombinant Human Synaptophysin protein ab114166

画像数 1

製品の詳細

製品名	Recombinant Human Synaptophysin protein
発現系	Wheat germ
アクセッション番号	P08247
タンパク質長	Full length protein
Animal free	No
由来	Recombinant
生物種	Human
配列	MLLLADMDVVNQLVAGGQFRVVKEPLGFVKVLQWVFAIFAFA TCGSYS GELQLNVDCANKTESDLSIEVEFEYPFRLHQVYFDAPTCRGG TTKVFLVG DYSSSAEFFVTVAVFALYSMGALATYIFLQNKYRENNKGPM LDFLATAV FAFMWLVSSSAWAKGLSDVKMATDPENIIKEMPVCRQTGNTC KELRDLVT SGLNTSVVFGFLNLVLWVGNLWFVKETGWAAPFLRPPGAP EKQPAPGD AYGDAGYGQPGGGYPQDSYGPQGGYQPDYQPPAGSGGSGYG PQGDYGGQ GYGPQGAPTSFSNQM
予測される分子量	61 kDa including tags
領域	1 to 313

特性

Our **Abpromise guarantee** covers the use of **ab114166** in the following tested applications.

The application notes include recommended starting dilutions; optimal dilutions/concentrations should be determined by the end user.

アプリケーション	SDS-PAGE ELISA Western blot
製品の状態	Liquid

保存方法および安定性

Shipped on dry ice. Upon delivery aliquot and store at -80°C. Avoid freeze / thaw cycles.

pH: 8.00

Constituents: 0.3% Glutathione, 0.79% Tris HCl

関連情報

機能

Possibly involved in structural functions as organizing other membrane components or in targeting the vesicles to the plasma membrane. Involved in the regulation of short-term and long-term synaptic plasticity.

組織特異性

Characteristic of a type of small (30-80 nm) neurosecretory vesicles, including presynaptic vesicles, but also vesicles of various neuroendocrine cells of both neuronal and epithelial phenotype.

関連疾患

Mental retardation, X-linked, SYP-related

配列類似性

Belongs to the synaptophysin/synaptobrevin family.

Contains 1 MARVEL domain.

ドメイン

The calcium-binding activity is thought to be localized in the cytoplasmic tail of the protein.

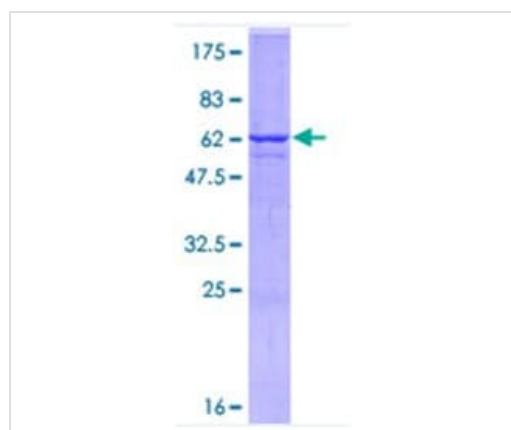
翻訳後修飾

Ubiquitinated; mediated by SIAH1 or SIAH2 and leading to its subsequent proteasomal degradation.

細胞内局在

Cytoplasmic vesicle, secretory vesicle, synaptic vesicle membrane. Cell junction, synapse, synaptosome.

画像



12.5% SDS-PAGE analysis of ab114166, stained with Coomassie Blue.

SDS-PAGE - Recombinant Human Synaptophysin protein (ab114166)

Please note: All products are "FOR RESEARCH USE ONLY. NOT FOR USE IN DIAGNOSTIC PROCEDURES"

Our Abpromise to you: Quality guaranteed and expert technical support

- Replacement or refund for products not performing as stated on the datasheet

- Valid for 12 months from date of delivery
- Response to your inquiry within 24 hours

- We provide support in Chinese, English, French, German, Japanese and Spanish
- Extensive multi-media technical resources to help you
- We investigate all quality concerns to ensure our products perform to the highest standards

If the product does not perform as described on this datasheet, we will offer a refund or replacement. For full details of the Abpromise, please visit <https://www.abcam.co.jp/abpromise> or contact our technical team.

Terms and conditions

- Guarantee only valid for products bought direct from Abcam or one of our authorized distributors