

## Product datasheet

# Recombinant Human SUV420h1 protein ab80286

### 画像数 1

#### 製品の詳細

---

製品名	Recombinant Human SUV420h1 protein
精製度	> 20 % SDS-PAGE.
発現系	Escherichia coli
タンパク質長	Protein fragment
Animal free	No
由来	Recombinant
生物種	Human
領域	2 to 387

#### 特性

---

Our **Abpromise guarantee** covers the use of **ab80286** in the following tested applications.

The application notes include recommended starting dilutions; optimal dilutions/concentrations should be determined by the end user.

アプリケーション	SDS-PAGE
製品の状態	Liquid

#### 前処理および保存

---

保存方法および安定性	Shipped on Dry Ice. Upon delivery aliquot. Store at -80°C. Avoid freeze / thaw cycle. pH: 8.00 Constituents: 0.0462% (R*,R*)-1,4-Dimercaptobutan-2,3-diol, 0.395% Tris HCl, 0.05% Tween, 30% Glycerol (glycerin, glycerine), 0.58% Sodium chloride
------------	--

#### 関連情報

---

機能	Histone methyltransferase that specifically trimethylates 'Lys-20' of histone H4. H4 'Lys-20' trimethylation represents a specific tag for epigenetic transcriptional repression. Mainly functions in pericentric heterochromatin regions, thereby playing a central role in the establishment of constitutive heterochromatin in these regions. KMT5B is targeted to histone H3 via its interaction with RB1 family proteins (RB1, RBL1 and RBL2) (By similarity). Plays a role in myogenesis by
----	---

regulating the expression of target genes, such as EID3.

#### 配列類似性

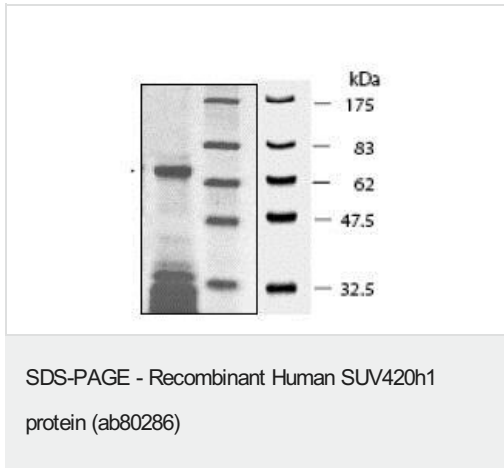
Belongs to the class V-like SAM-binding methyltransferase superfamily. Histone-lysine methyltransferase family. Suvar4-20 subfamily.

Contains 1 SET domain.

#### 細胞内局在

Nucleus. Chromosome. Associated with pericentric heterochromatin. CBX1 and CBX5 are required for the localization to pericentric heterochromatin (By similarity).

#### 画像



SDS-PAGE showing ab80286 at approximately 70kDa (3 $\mu$ g).

**Please note:** All products are "FOR RESEARCH USE ONLY. NOT FOR USE IN DIAGNOSTIC PROCEDURES"

#### Our Abpromise to you: Quality guaranteed and expert technical support

- Replacement or refund for products not performing as stated on the datasheet
- Valid for 12 months from date of delivery
- Response to your inquiry within 24 hours
- We provide support in Chinese, English, French, German, Japanese and Spanish
- Extensive multi-media technical resources to help you
- We investigate all quality concerns to ensure our products perform to the highest standards

If the product does not perform as described on this datasheet, we will offer a refund or replacement. For full details of the Abpromise, please visit <https://www.abcam.co.jp/abpromise> or contact our technical team.

#### Terms and conditions

- Guarantee only valid for products bought direct from Abcam or one of our authorized distributors