

Recombinant Human Stromal interaction molecule 1 protein ab78681

画像数 1

製品の詳細

製品名	Recombinant Human Stromal interaction molecule 1 protein
精製度	> 90 % SDS-PAGE. ab78681 is purified using conventional chromatography techniques.
発現系	Escherichia coli
タンパク質長	Full length protein
Animal free	No
由来	Recombinant
生物種	Human
配列	<u>MADQLTEEQI AEFKEAFSLF DKDGDGTITT</u> <u>KELGTVMRSL GQNPTAEALQ DMINEVDADG</u> <u>NGTIDFPEFL TMMARKMKDT DSEEEIREAF</u> <u>RVFDKDGNGY ISAAELRHVM TNLGEKLTDE</u> <u>EVDEMIREAD IDGDGQVNYE EFVQMMTAKG</u> <u>SMLSHSHSEK ATGTSSGANS EESTAAEFCR</u> <u>IDKPLCHSED EKLSFEAVRN IHKLMDDAN</u> <u>GDVDVEESDE FLREDLNYHD PTVKHSTFHG</u> <u>EDKLISVEDL WKAWKSSEVY NWTVDEVVQW</u> <u>LITYVELPQY EETFRKLQLS GHAMPRLAVT</u> <u>NTTMTGTVLK MDRSHRQKL QLKALDTVLF</u> <u>GPPLLTRHNN LKD</u> underlined sequence is the CaM tag.
領域	23 to 213

特性

Our **Abpromise guarantee** covers the use of **ab78681** in the following tested applications.

The application notes include recommended starting dilutions; optimal dilutions/concentrations should be determined by the end user.

アプリケーション	SDS-PAGE
製品の状態	Liquid

保存方法および安定性

Shipped at 4°C. Upon delivery aliquot and store at -20°C. Avoid freeze / thaw cycles.

pH: 7.50

Constituent: 0.242% Tris

関連情報

機能

Plays a role in mediating Ca(2+) influx following depletion of intracellular Ca(2+) stores. Acts as Ca(2+) sensor in the endoplasmic reticulum via its EF-hand domain. Upon Ca(2+) depletion, translocates from the endoplasmic reticulum to the plasma membrane where it activates the Ca(2+) release-activated Ca(2+) (CRAC) channel subunit, TMEM142A/ORAI1.

組織特異性

Ubiquitously expressed in various human primary cells and tumor cell lines.

関連疾患

Defects in STIM1 are the cause of immune dysfunction with T-cell inactivation due to calcium entry defect type 2 (IDTICED2) [MIM:612783]. IDTICED2 is an immune disorder characterized by recurrent infections, impaired T-cell activation and proliferative response, decreased T-cell production of cytokines, lymphadenopathy, and normal lymphocytes counts and serum immunoglobulin levels. Additional features include thrombocytopenia, autoimmune hemolytic anemia, non-progressive myopathy, partial iris hypoplasia, hepatosplenomegaly and defective enamel dentition.

配列類似性

Contains 1 EF-hand domain.

Contains 1 SAM (sterile alpha motif) domain.

ドメイン

The microtubule tip localization signal (MtLS) motif; mediates interaction with MAPRE1 and targeting to the growing microtubule plus ends.

翻訳後修飾

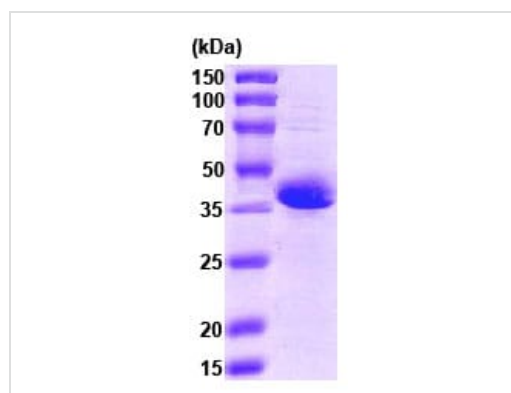
Glycosylation is required for cell surface expression.

Phosphorylated predominantly on Ser residues.

細胞内局在

Cell membrane. Endoplasmic reticulum membrane. Cytoplasm > cytoskeleton. Translocates from the endoplasmic reticulum to the cell membrane in response to a depletion of intracellular calcium. Associated with the microtubule network at the growing distal tip of microtubules.

画像



15% SDS-PAGE showing **ab68681** at approximately 38kDa (3µg).

SDS-PAGE - Recombinant Human Stromal interaction molecule 1 protein (ab78681)

Please note: All products are "FOR RESEARCH USE ONLY. NOT FOR USE IN DIAGNOSTIC PROCEDURES"

Our Abpromise to you: Quality guaranteed and expert technical support

- Replacement or refund for products not performing as stated on the datasheet
- Valid for 12 months from date of delivery
- Response to your inquiry within 24 hours

- We provide support in Chinese, English, French, German, Japanese and Spanish
- Extensive multi-media technical resources to help you
- We investigate all quality concerns to ensure our products perform to the highest standards

If the product does not perform as described on this datasheet, we will offer a refund or replacement. For full details of the Abpromise, please visit <https://www.abcam.co.jp/abpromise> or contact our technical team.

Terms and conditions

- Guarantee only valid for products bought direct from Abcam or one of our authorized distributors