

Recombinant human STK25 protein ab125588

画像数 2

製品の詳細

製品名	Recombinant human STK25 protein
生理活性	The specific activity of ab125588 was determined to be 11 nmol/min/mg.
精製度	= 90 % Densitometry. Affinity purified.
発現系	Baculovirus infected Sf9 cells
アクセッション番号	<u>O00506</u>
タンパク質長	Full length protein
Animal free	No
由来	Recombinant
生物種	Human
予測される分子量	76 kDa including tags
領域	1 to 426

特性

Our **Abpromise guarantee** covers the use of **ab125588** in the following tested applications.

The application notes include recommended starting dilutions; optimal dilutions/concentrations should be determined by the end user.

アプリケーション	Western blot Functional Studies SDS-PAGE
製品の状態	Liquid
備考	<u>ab64311</u> (Myelin Basic Protein protein) can be utilized as a substrate for assessing kinase activity

前処理および保存

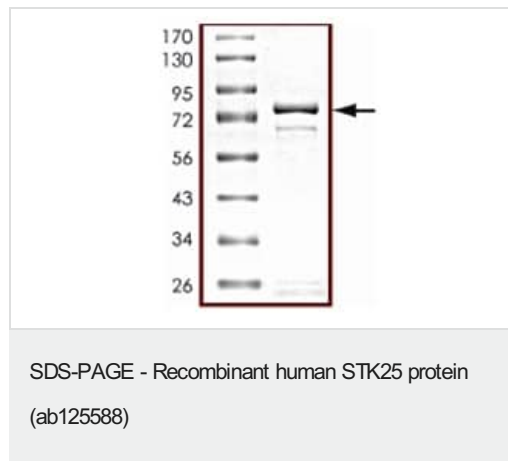
保存方法および安定性	Shipped on dry ice. Upon delivery aliquot and store at -80°C. Avoid freeze / thaw cycles. pH: 7.50 Constituents: 0.31% Glutathione, 0.002% PMSF, 0.004% DTT, 0.79% Tris HCl, 0.003% EDTA, 25% Glycerol (glycerin, glycerine), 0.88% Sodium chloride
------------	---

This product is an active protein and may elicit a biological response in vivo, handle with caution.

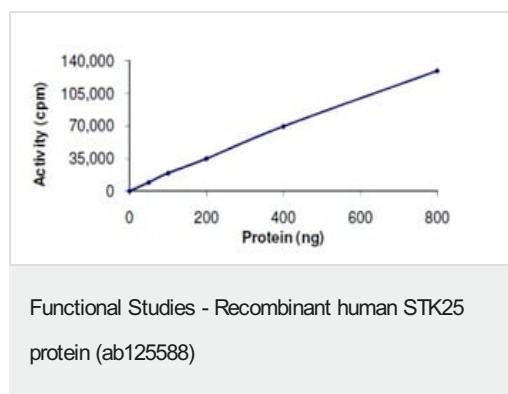
関連情報

機能	Oxidant stress-activated serine/threonine kinase that may play a role in the response to environmental stress. Targets to the Golgi apparatus where it appears to regulate protein transport events, cell adhesion, and polarity complexes important for cell migration.
組織特異性	Ubiquitously expressed. Highest levels are found in testis, large intestine, brain and stomach followed by heart and lung.
配列類似性	Belongs to the protein kinase superfamily. STE Ser/Thr protein kinase family. STE20 subfamily. Contains 1 protein kinase domain.
翻訳後修飾	Phosphorylated upon DNA damage, probably by ATM or ATR.
細胞内局在	Cytoplasm. Golgi apparatus. Localizes to the Golgi apparatus.

画像



SDS Page analysis of ab125588



The specific activity of ab125588 was determined to be 11 nmol/min/mg

Please note: All products are "FOR RESEARCH USE ONLY. NOT FOR USE IN DIAGNOSTIC PROCEDURES"

Our Abpromise to you: Quality guaranteed and expert technical support

- Replacement or refund for products not performing as stated on the datasheet

- Valid for 12 months from date of delivery
- Response to your inquiry within 24 hours
- We provide support in Chinese, English, French, German, Japanese and Spanish
- Extensive multi-media technical resources to help you
- We investigate all quality concerns to ensure our products perform to the highest standards

If the product does not perform as described on this datasheet, we will offer a refund or replacement. For full details of the Abpromise, please visit <https://www.abcam.co.jp/abpromise> or contact our technical team.

Terms and conditions

- Guarantee only valid for products bought direct from Abcam or one of our authorized distributors