

Recombinant Human Smad2 protein ab63176

画像数 2

製品の詳細

製品名	Recombinant Human Smad2 protein
精製度	> 90 % Densitometry.
発現系	Escherichia coli
タンパク質長	Full length protein
Animal free	No
由来	Recombinant
生物種	Human

特性

Our **Abpromise guarantee** covers the use of **ab63176** in the following tested applications.

The application notes include recommended starting dilutions; optimal dilutions/concentrations should be determined by the end user.

アプリケーション	SDS-PAGE Western blot
製品の状態	Liquid

前処理および保存

保存方法および安定性	Shipped on dry ice. Upon delivery aliquot and store at -80°C. Avoid freeze / thaw cycles. pH: 7.50 Constituents: 0.00174% PMSF, 0.00385% DTT, 0.79% Tris HCl, 25% Glycerol (glycerin, glycerine), 0.87% Sodium chloride
------------	---

関連情報

機能	Receptor-regulated SMAD (R-SMAD) that is an intracellular signal transducer and transcriptional modulator activated by TGF-beta (transforming growth factor) and activin type 1 receptor kinases. Binds the TRE element in the promoter region of many genes that are regulated by TGF-beta and, on formation of the SMAD2/SMAD4 complex, activates transcription. May act as a tumor suppressor in colorectal carcinoma.
----	---

組織特異性

Expressed at high levels in skeletal muscle, heart and placenta.

配列類似性

Belongs to the dwarfin/SMAD family.

Contains 1 MH1 (MAD homology 1) domain.

Contains 1 MH2 (MAD homology 2) domain.

翻訳後修飾

Phosphorylated on one or several of Thr-220, Ser-245, Ser-250, and Ser-255. In response to TGF-beta, phosphorylated on Ser-465/467 by TGF-beta and activin type 1 receptor kinases. Able to interact with SMURF2 when phosphorylated on Ser-465/467, recruiting other proteins, such as SNON, for degradation. In response to decorin, the naturally occurring inhibitor of TGF-beta signaling, phosphorylated on Ser-240 by CaMK2. Phosphorylated by MAPK3 upon EGF stimulation; which increases transcriptional activity and stability, and is blocked by calmodulin. In response to TGF-beta, ubiquitinated by NEDD4L; which promotes its degradation. Acetylated on Lys-19 by coactivators in response to TGF-beta signaling, which increases transcriptional activity. Isoform short: Acetylation increases DNA binding activity in vitro and enhances its association with target promoters in vivo. Acetylation in the nucleus by EP300 is enhanced by TGF-beta.

細胞内局在

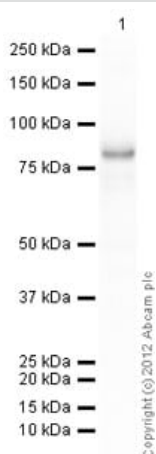
Cytoplasm. Nucleus. Cytoplasmic and nuclear in the absence of TGF-beta. On TGF-beta stimulation, migrates to the nucleus when complexed with SMAD4. On dephosphorylation by phosphatase PPM1A, released from the SMAD2/SMAD4 complex, and exported out of the nucleus by interaction with RANBP1.

画像



ab63176 on SDS-PAGE, MW ~90kDa.

SDS-PAGE - Recombinant Human Smad2 protein
(ab63176)



Western blot - Recombinant Human Smad2 protein
(ab63176)

Our Abpromise to you: Quality guaranteed and expert technical support

- Replacement or refund for products not performing as stated on the datasheet
- Valid for 12 months from date of delivery
- Response to your inquiry within 24 hours

- We provide support in Chinese, English, French, German, Japanese and Spanish
- Extensive multi-media technical resources to help you
- We investigate all quality concerns to ensure our products perform to the highest standards

If the product does not perform as described on this datasheet, we will offer a refund or replacement. For full details of the Abpromise, please visit <https://www.abcam.co.jp/abpromise> or contact our technical team.

Terms and conditions

- Guarantee only valid for products bought direct from Abcam or one of our authorized distributors