

Recombinant human SLK protein ab89590

画像数 5

製品の詳細

製品名	Recombinant human SLK protein
生理活性	The Specific activity of ab89590 was determined to be 4.6 nmol/min/mg.
精製度	> 80 % Densitometry. Affinity purified.
発現系	Baculovirus infected Sf9 cells
アクセッション番号	<b><u>Q9H2G2</u></b>
タンパク質長	Full length protein
Animal free	No
由来	Recombinant
生物種	Human
タグ	GST tag N-Terminus

特性

Our **Abpromise guarantee** covers the use of **ab89590** in the following tested applications.

The application notes include recommended starting dilutions; optimal dilutions/concentrations should be determined by the end user.

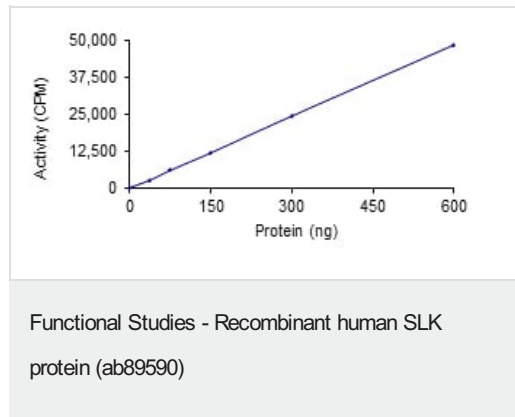
アプリケーション	SDS-PAGE Western blot Functional Studies
製品の状態	Liquid

前処理および保存

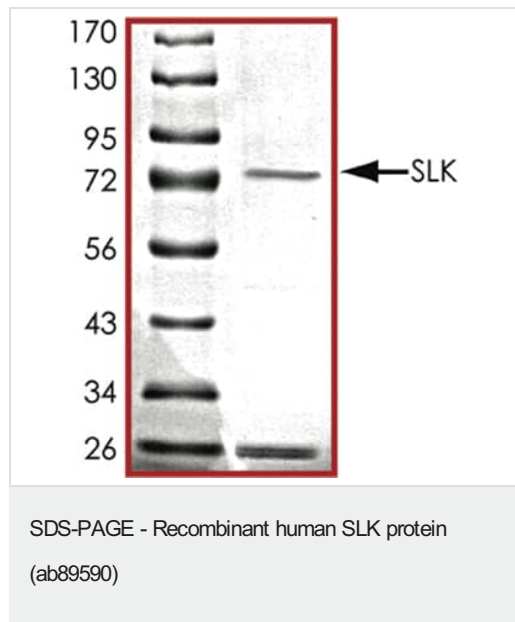
保存方法および安定性	Shipped on dry ice. Upon delivery aliquot and store at -80°C. Avoid freeze / thaw cycles. pH: 7.50 Constituents: 0.0038% EGTA, 0.00174% PMSF, 0.00385% DTT, 0.79% Tris HCl, 0.00292% EDTA, 25% Glycerol (glycerin, glycerine), 0.87% Sodium chloride This product is an active protein and may elicit a biological response in vivo, handle with caution.
------------	--

関連性	SLK is a serine/threonine protein kinase that is involved in cytoskeletal reorganization and apoptosis. SLK is a microtubule-associated protein inducing actin stress fiber disassembly, it also mediates apoptosis and it is ubiquitously expressed; highest expression is found in heart and in skeletal muscle. There are two named isoforms.
細胞内局在	Cytoplasmic

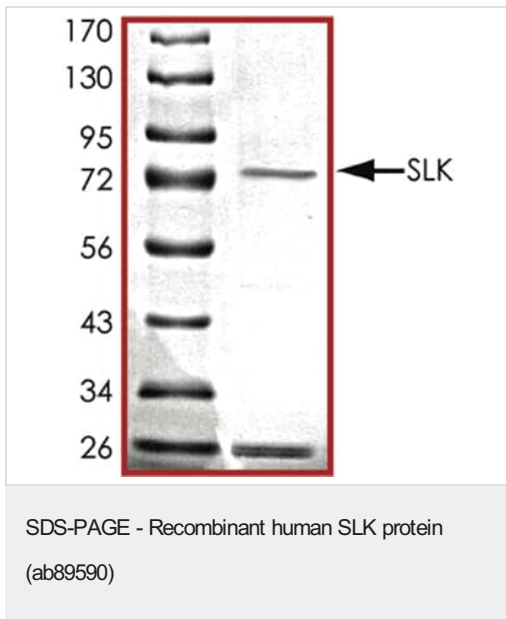
画像



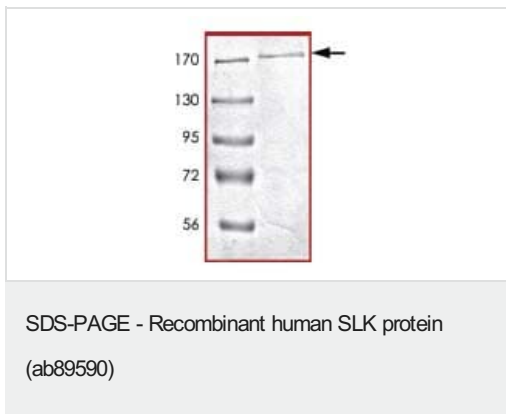
The specific activity of SLK (ab89590) was determined to be 4.6 nmol/min/mg as per activity assay protocol



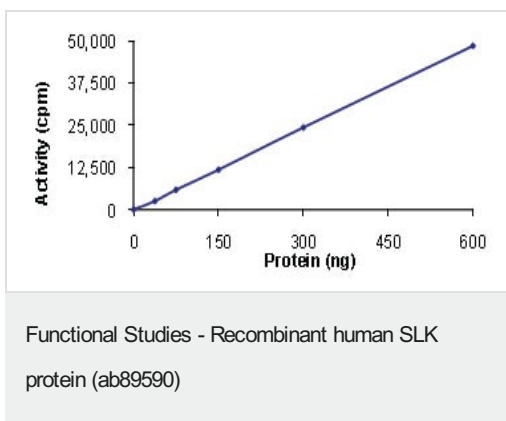
SDS PAGE analysis of ab89590



SDS PAGE analysis of ab89590



SDS-PAGE showing ab89590 at approximately 180kDa.



Kinase Assay demonstrating specific activity of ab89590.

**Please note:** All products are "FOR RESEARCH USE ONLY. NOT FOR USE IN DIAGNOSTIC PROCEDURES"

### **Our Abpromise to you: Quality guaranteed and expert technical support**

---

- Replacement or refund for products not performing as stated on the datasheet
- Valid for 12 months from date of delivery
- Response to your inquiry within 24 hours
  
- We provide support in Chinese, English, French, German, Japanese and Spanish
- Extensive multi-media technical resources to help you
- We investigate all quality concerns to ensure our products perform to the highest standards

If the product does not perform as described on this datasheet, we will offer a refund or replacement. For full details of the Abpromise, please visit <https://www.abcam.co.jp/abpromise> or contact our technical team.

### **Terms and conditions**

---

- Guarantee only valid for products bought direct from Abcam or one of our authorized distributors