

Recombinant human SHP1 protein ab61135

画像数 5

製品の詳細

製品名	Recombinant human SHP1 protein
精製度	> 90 % Densitometry.
発現系	Escherichia coli
タンパク質長	Full length protein
Animal free	No
由来	Recombinant
生物種	Human
タグ	GST tag N-Terminus

特性

Our **Abpromise guarantee** covers the use of **ab61135** in the following tested applications.

The application notes include recommended starting dilutions; optimal dilutions/concentrations should be determined by the end user.

アプリケーション	SDS-PAGE
	Functional Studies

製品の状態	Liquid
-------	--------

前処理および保存

保存方法および安定性	Shipped on dry ice. Upon delivery aliquot and store at -80°C. Avoid freeze / thaw cycles. pH: 7.50 Constituents: 0.418% MOPS, 0.00174% PMSF, 0.00385% DTT, 30% Glycerol (glycerin, glycerine), 50% Sodium chloride This product is an active protein and may elicit a biological response in vivo, handle with caution.
------------	--

関連情報

機能	Plays a key role in hematopoiesis. This PTPase activity may directly link growth factor receptors and other signaling proteins through protein-tyrosine phosphorylation. The SH2 regions may
----	--

interact with other cellular components to modulate its own phosphatase activity against interacting substrates. Together with MTUS1, induces UBE2V2 expression upon angiotensin II stimulation.

組織特異性

Isoform 1 is expressed in hematopoietic cells. Isoform 2 is expressed in non-hematopoietic cells.

配列類似性

Belongs to the protein-tyrosine phosphatase family. Non-receptor class 2 subfamily.

Contains 2 SH2 domains.

Contains 1 tyrosine-protein phosphatase domain.

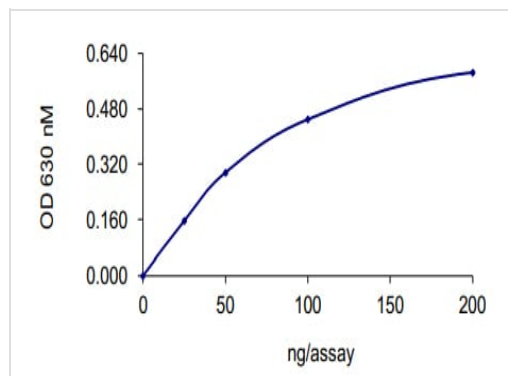
翻訳後修飾

Phosphorylated on serine and tyrosine residues.

細胞内局在

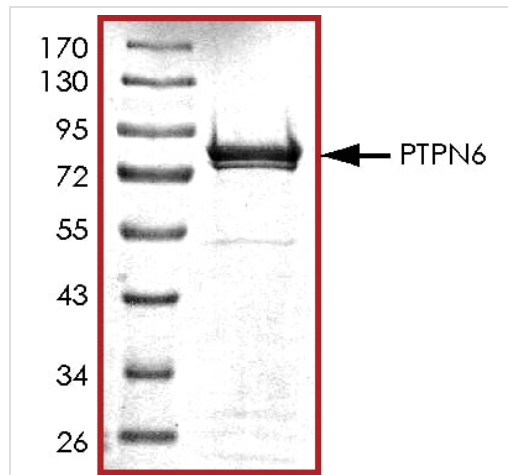
Cytoplasm. Nucleus. In neurons, translocates into the nucleus after treatment with angiotensin II.

画像



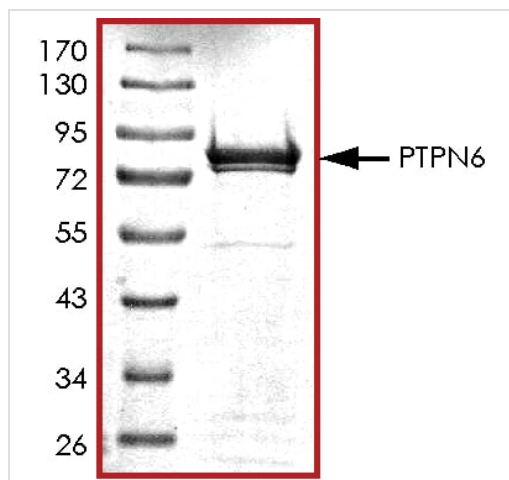
The specific activity of SHP1 (ab61135) was determined to be 1100 nmol phosphate released/min/mg as per activity assay protocol

Functional Studies - Recombinant human SHP1 protein (ab61135)



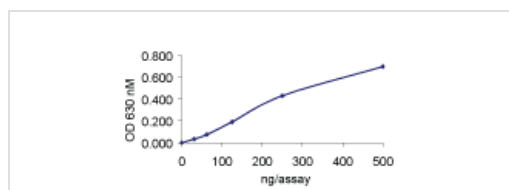
SDS PAGE analysis of ab61135

SDS-PAGE - Recombinant human SHP1 protein (ab61135)



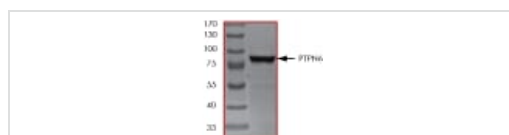
SDS PAGE analysis of ab61135

SDS-PAGE - Recombinant human SHP1 protein (ab61135)



Sample Kinase Activity Plot.

Functional Studies - Recombinant human SHP1 protein (ab61135)



ab61135 on SDS-PAGE, MW ~93 kDa.

SDS-PAGE - Recombinant human SHP1 protein (ab61135)

Please note: All products are "FOR RESEARCH USE ONLY. NOT FOR USE IN DIAGNOSTIC PROCEDURES"

Our Abpromise to you: Quality guaranteed and expert technical support

- Replacement or refund for products not performing as stated on the datasheet
- Valid for 12 months from date of delivery
- Response to your inquiry within 24 hours
- We provide support in Chinese, English, French, German, Japanese and Spanish

- Extensive multi-media technical resources to help you
- We investigate all quality concerns to ensure our products perform to the highest standards

If the product does not perform as described on this datasheet, we will offer a refund or replacement. For full details of the Abpromise, please visit <https://www.abcam.co.jp/abpromise> or contact our technical team.

Terms and conditions

- Guarantee only valid for products bought direct from Abcam or one of our authorized distributors