

Recombinant Human SEC13L1 protein ab105635

画像数 1

製品の詳細

製品名	Recombinant Human SEC13L1 protein
精製度	> 95 % SDS-PAGE. Purified using conventional chromatography techniques.
発現系	Escherichia coli
アクセッション番号	<u>P55735</u>
タンパク質長	Full length protein
Animal free	No
由来	Recombinant
生物種	Human
配列	MGSSHHHHH SSGLVPRGSHMVSINTVDT SHEDMIHDAQ MDYYGTRLAT CSSDRSVKIF DVRNGGQILI ADLRGHEGPV WQVAWAHPMY GNILASCSYD RKVIIWREEN GTWEKSHEHA GHDSSVNSVC WAPHDYGLIL ACGSSDGAIS LLTYTGEGQW EVKINNAHT IGCNAVSWAPAVVPGSLIDH PSGQKPNYIK RFASGGCDNL IKLWKEEEDG QWKEEQKLEA HSDWVRDVAW APSIGLPTST IASCSQDGRV FIWTCDDASS NTWSPKLLHK FNDVVWHVSW SITANILAVS GGDNKVTLWK ESVDGQWVCI SDVNKGQGSV SASVTEGQQN EQ
予測される分子量	38 kDa including tags
領域	1 to 322
タグ	His tag N-Terminus

特性

Our **Abpromise guarantee** covers the use of **ab105635** in the following tested applications.

The application notes include recommended starting dilutions; optimal dilutions/concentrations should be determined by the end user.

アプリケーション	SDS-PAGE Mass Spectrometry
質量分析	MALDI-TOF

製品の状態

Liquid

前処理および保存**保存方法および安定性**

Shipped at 4°C. Store at +4°C short term (1-2 weeks). Upon delivery aliquot. Store at -20°C or -80°C. Avoid freeze / thaw cycle.

pH: 8.00

Constituents: 0.0154% DTT, 0.316% Tris HCl, 10% Glycerol (glycerin, glycerine), 0.58% Sodium chloride

関連情報**機能**

Functions as a component of the nuclear pore complex (NPC) and the COPII coat. At the endoplasmic reticulum, SEC13 is involved in the biogenesis of COPII-coated vesicles.

配列類似性

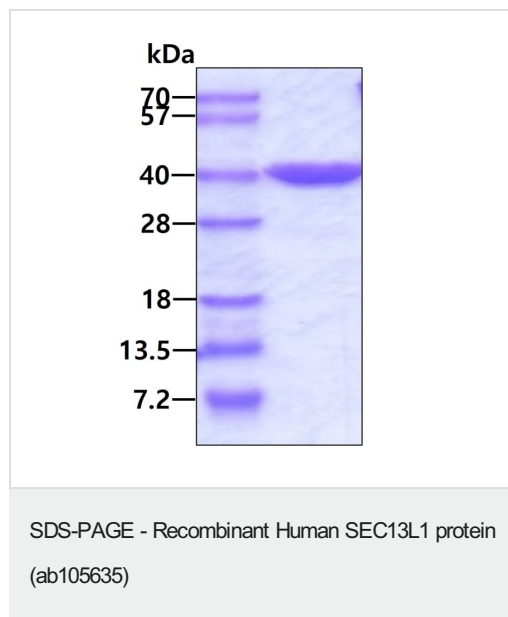
Belongs to the WD repeat SEC13 family.

Contains 6 WD repeats.

細胞内局在

Cytoplasmic vesicle > COPII-coated vesicle membrane. Endoplasmic reticulum membrane.

Nucleus > nuclear pore complex. In interphase, localizes at both sides of the NPC.

画像

3ug by SDS-PAGE under reducing condition and visualized by coomassie blue stain.

Please note: All products are "FOR RESEARCH USE ONLY. NOT FOR USE IN DIAGNOSTIC PROCEDURES"

Our Promise to you: Quality guaranteed and expert technical support

- Replacement or refund for products not performing as stated on the datasheet
- Valid for 12 months from date of delivery
- Response to your inquiry within 24 hours

- We provide support in Chinese, English, French, German, Japanese and Spanish
- Extensive multi-media technical resources to help you
- We investigate all quality concerns to ensure our products perform to the highest standards

If the product does not perform as described on this datasheet, we will offer a refund or replacement. For full details of the Abpromise, please visit <https://www.abcam.co.jp/abpromise> or contact our technical team.

Terms and conditions

- Guarantee only valid for products bought direct from Abcam or one of our authorized distributors