

# Recombinant Human SAHH protein ab99326

[2 References](#) [画像数 2](#)

### 製品の詳細

---

製品名	Recombinant Human SAHH protein
精製度	> 95 % SDS-PAGE. ab99326 is purified using conventional chromatography techniques.
発現系	Escherichia coli
アクセッション番号	<b><u>P23526</u></b>
タンパク質長	Full length protein
Animal free	No
由来	Recombinant
生物種	Human
配列	<b>MGSSHHHHHSSGLVPRGSHMSDKLPYKVADIGLAAWGRK ALDIAENEMP GLMRMRERYASAKPLKGARIAGCLHMTVETAVLIETLVTLGA EVQWSSCN IFSTQDHAAAAIAKAGIPVYAWKGETDEEYLWCIEQTLYFKD GPLNMILD DGGDLTNLIHTKYPQLLPGIRGISEETTTGVHNLKMMANGI LKVPAINV NDSVTKSKFDNLYGCRESLIDGIKRDVMIAGKVAVVAGYG DVGKGAQ ALRGFGARVIITEIDPINALQAAMEGYEVTTMDEACQEGNIF VTTTGCID IILGRHFQMKDDAIVCNIGHFDVEIDVKWLNENAVEKVNK PQVDYRL KNGRRIILAEGRVLVNLGCAMGHPSFVMSNSFTNQVMAQIEL WTHPKYP VGVHFLPKKLDEAVAEHLGKLVNKLTKLTEKQAQYLGMSCD GPFKPDHY RY</b>
予測される分子量	50 kDa including tags
領域	1 to 432
タグ	His tag N-Terminus

### 特性

---

Our **Abpromise guarantee** covers the use of **ab99326** in the following tested applications.

The application notes include recommended starting dilutions; optimal dilutions/concentrations should be determined by the end user.

アプリケーション	Western blot SDS-PAGE Mass Spectrometry
質量分析	MALDI-TOF
製品の状態	Liquid
備考	This product was previously labelled as S adenosylhomocysteine hydrolase

#### 前処理および保存

---

保存方法および安定性	Shipped at 4°C. Upon delivery aliquot and store at -20°C or -80°C. Avoid repeated freeze / thaw cycles. pH: 7.40 Constituents: 20% Glycerol (glycerin, glycerine), PBS
------------	--

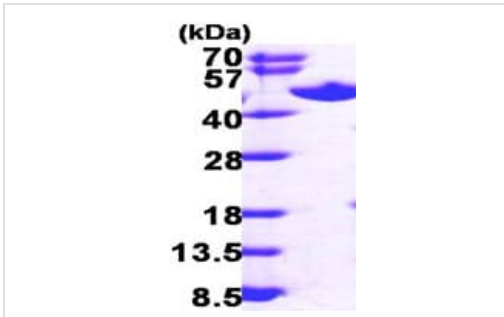
#### 関連情報

---

機能	Adenosylhomocysteine is a competitive inhibitor of S-adenosyl-L-methionine-dependent methyl transferase reactions; therefore adenosylhomocysteinase may play a key role in the control of methylations via regulation of the intracellular concentration of adenosylhomocysteine.
パスウェイ	Amino-acid biosynthesis; L-homocysteine biosynthesis; L-homocysteine from S-adenosyl-L-homocysteine: step 1/1.
関連疾患	Defects in AHCY are the cause of hypermethioninemia with S-adenosylhomocysteine hydrolase deficiency (HMAHCHD) [MIM:613752]. A metabolic disorder characterized by hypermethioninemia associated with failure to thrive, mental and motor retardation, facial dysmorphism with abnormal hair and teeth, and cardiomyopathy.
配列類似性	Belongs to the adenosylhomocysteinase family.
細胞内局在	Cytoplasm. Melanosome. Identified by mass spectrometry in melanosome fractions from stage I to stage IV.

#### 画像

---



SDS-PAGE - Recombinant Human SAHH protein  
(ab99326)

15% SDS-PAGE showing ab99326 (3µg).



Western blot - Recombinant Human SAHH protein  
(ab99326)

Anti-SAHH antibody (**ab56146**) at 1 µg/ml + Recombinant Human SAHH protein (ab99326) at 0.1 µg

**Secondary**

Goat Anti-Rabbit IgG H&L (HRP) preadsorbed (**ab97080**) at 1/5000 dilution

Developed using the ECL technique.

Performed under reducing conditions.

**Exposure time:** 90 seconds

**Please note:** All products are "FOR RESEARCH USE ONLY. NOT FOR USE IN DIAGNOSTIC PROCEDURES"

**Our Abpromise to you: Quality guaranteed and expert technical support**

- Replacement or refund for products not performing as stated on the datasheet
- Valid for 12 months from date of delivery
- Response to your inquiry within 24 hours
- We provide support in Chinese, English, French, German, Japanese and Spanish
- Extensive multi-media technical resources to help you
- We investigate all quality concerns to ensure our products perform to the highest standards

If the product does not perform as described on this datasheet, we will offer a refund or replacement. For full details of the Abpromise, please visit <https://www.abcam.co.jp/abpromise> or contact our technical team.

**Terms and conditions**

- Guarantee only valid for products bought direct from Abcam or one of our authorized distributors