

Recombinant Human S100A14 protein ab101041

画像数 1

製品の詳細

製品名	Recombinant Human S100A14 protein
精製度	> 95 % SDS-PAGE. ab101041 was purified using Ni-NTA chromatography and filtered through a 0.4 µm filter.
発現系	Escherichia coli
アクセッション番号	<u>Q9HCY8</u>
タンパク質長	Full length protein
Animal free	No
由来	Recombinant
生物種	Human
配列	MKHHHHHHASMGQCRSANAEDAQEFSDVERAIETLIKNFHQ YSVEGGKET LTPSELRLDVTQQLPHLMPSNCGLEEKIANLGSCNDSKLEFR SFWELIGE AAKSVKLERPVRGH
予測される分子量	13 kDa including tags
領域	1 to 104
タグ	His tag N-Terminus

特性

Our **Abpromise guarantee** covers the use of **ab101041** in the following tested applications.

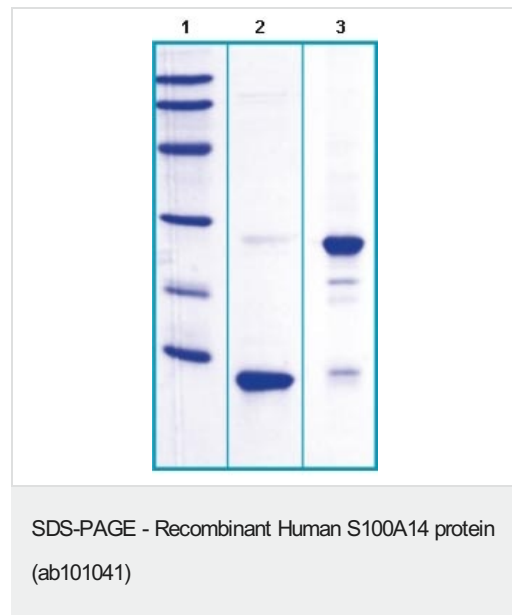
The application notes include recommended starting dilutions; optimal dilutions/concentrations should be determined by the end user.

アプリケーション	Western blot SDS-PAGE
製品の状態	Lyophilized
備考	Store lyophilized protein at –20°C. Lyophilized protein remains stable until the expiry date when stored at –20°C. This product was previously labelled as S100 calcium binding protein A14

前処理および保存

保存方法および安定性	Shipped at 4°C. Store at +4°C short term (1-2 weeks). Upon delivery aliquot. Store at -80°C. Avoid freeze / thaw cycle. Please see notes section. Constituents: 0.242% Tris, 0.29% Sodium chloride
再構成	Add deionized water to prepare a working stock solution of approximately 0.5 mg/mL and let the lyophilized pellet dissolve completely. Product is not sterile! Please filter the product by an appropriate sterile filter before using it in cell culture.
関連情報	
機能	Modulates P53/TP53 protein levels, and thereby plays a role in the regulation of cell survival and apoptosis. Depending on the context, it can promote cell proliferation or apoptosis. Plays a role in the regulation of cell migration by modulating the levels of MMP2, a matrix protease that is under transcriptional control of P53/TP53. Does not bind calcium.
組織特異性	Expressed at highest levels in colon and at moderate levels in thymus, kidney, liver, small intestine, and lung. Low expression in heart and no expression is seen in brain, skeletal muscle, spleen, placenta and peripheral blood leukocytes.
配列類似性	Belongs to the S-100 family. Contains 1 EF-hand domain.
細胞内局在	Cytoplasm.

画像



14% SDS-PAGE analysis of ab101041

Lane 1: Molecular weight markers; 14, 21, 31, 45, 66, 97 kDa

Lane 2: ab101041 (reduced and heated, 5µg / lane)

Lane 3: ab101041 (non-reduced and non-heated, 5µg / lane).

Please note: All products are "FOR RESEARCH USE ONLY. NOT FOR USE IN DIAGNOSTIC PROCEDURES"

Our Abpromise to you: Quality guaranteed and expert technical support

- Replacement or refund for products not performing as stated on the datasheet
- Valid for 12 months from date of delivery

- Response to your inquiry within 24 hours
- We provide support in Chinese, English, French, German, Japanese and Spanish
- Extensive multi-media technical resources to help you
- We investigate all quality concerns to ensure our products perform to the highest standards

If the product does not perform as described on this datasheet, we will offer a refund or replacement. For full details of the Abpromise, please visit <https://www.abcam.co.jp/abpromise> or contact our technical team.

Terms and conditions

- Guarantee only valid for products bought direct from Abcam or one of our authorized distributors