

### Recombinant Human S100 alpha protein ab206460

画像数 1

#### 製品の詳細

製品名	Recombinant Human S100 alpha protein
精製度	> 95 % Densitometry.
エンドキシン・レベル	< 1.000 Eu/μg
発現系	Escherichia coli
アクセッション番号	<b><u>P23297</u></b>
タンパク質長	Full length protein
Animal free	No
由来	Recombinant
生物種	Human
配列	MKHHHHHHASGSELETAMETLINVFHAHSGKEGDKYKLSKKE LKELLQTE LSGFLDAQKDVIDAVDKVMKELDENGDEVDVFQEYVVLVAALT VACNNFFW ENS
予測される分子量	12 kDa including tags
領域	2 to 94
タグ	His tag N-Terminus

#### 特性

Our **Abpromise guarantee** covers the use of **ab206460** in the following tested applications.

The application notes include recommended starting dilutions; optimal dilutions/concentrations should be determined by the end user.

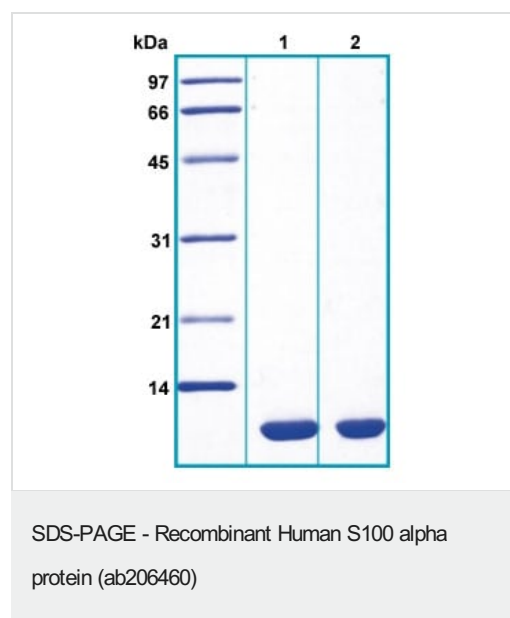
アプリケーション	SDS-PAGE
製品の状態	Lyophilized

#### 前処理および保存

保存方法および安定性	Shipped at 4°C. Upon delivery aliquot. Store at -80°C. Avoid freeze / thaw cycle. Constituents: 0.29% Sodium chloride, 0.24% Tris  Lyophilized from a 0.4 μm filtered solution.
------------	--

<b>再構成</b>	Add deionized water to prepare a working stock solution of approximately 0.5 mg/ml and let the lyophilized pellet dissolve completely.
<b>関連情報</b>	
<b>機能</b>	Weakly binds calcium but binds zinc very tightly-distinct binding sites with different affinities exist for both ions on each monomer. Physiological concentrations of potassium ion antagonize the binding of both divalent cations, especially affecting high-affinity calcium-binding sites.
<b>組織特異性</b>	Highly prevalent in heart. Also found in lesser quantities in skeletal muscle and brain.
<b>配列類似性</b>	Belongs to the S-100 family. Contains 2 EF-hand domains.
<b>細胞内局在</b>	Cytoplasm.

## 画像



14% SDS-PAGE analysis of ab206460.

Lane 1: Reduced and heated sample, 5µg / lane

Lane 2: Non-reduced and non-heated sample, 5µg / lane

**Please note:** All products are "FOR RESEARCH USE ONLY. NOT FOR USE IN DIAGNOSTIC PROCEDURES"

## Our Abpromise to you: Quality guaranteed and expert technical support

- Replacement or refund for products not performing as stated on the datasheet
- Valid for 12 months from date of delivery
- Response to your inquiry within 24 hours
- We provide support in Chinese, English, French, German, Japanese and Spanish
- Extensive multi-media technical resources to help you
- We investigate all quality concerns to ensure our products perform to the highest standards

If the product does not perform as described on this datasheet, we will offer a refund or replacement. For full details of the Abpromise, please visit <https://www.abcam.co.jp/abpromise> or contact our technical team.

## **Terms and conditions**

---

- Guarantee only valid for products bought direct from Abcam or one of our authorized distributors