

### Recombinant Human RUNX1T1/ETO/CDR protein ab152255

画像数 1

#### 製品の詳細

製品名	Recombinant Human RUNX1T1/ETO/CDR protein
発現系	Wheat germ
アクセッション番号	<b>Q06455</b>
タンパク質長	Protein fragment
Animal free	No
由来	Recombinant
生物種	Human
配列	MPDSPVDVKTQSRLTPPTMPPPTTQGAPRTSSFTPTTLTNG TSHSPTAL NGAPSPNGFNGPSSSSSSSLANQQLPPACGARQLSKLKRF LTTLQQFG NDISPEIGERVRTLVLGLVNSTLTIEEFHSKLQEATNFPLRP FVIPFLKA NLPLLQRELLHCARLAKQNPAYLAQHEQLLLDASTTSPVDS SELLLDVN ENGKRRTPDRTKENGFDREPLHSEHPSKRPCTISPGQRYSPN NGLSYQPN GLPHPTPPPQHYRLDDMAIAHHRDSYRHPSHRDLRDRNRP MGLHGTRQ EEMIDHRLTDREWAEWVKHLDHLLNCIMDMVEKTRRSLTVLR RCQEADRE ELNYWIRRYSDAEDLKKGGGSSSSSHRQQSPVNPDPVALDAH REFLHRPA SGYVPEEIWKKAEEAVNEVKRQAMTELQKAVSEAERKAHDMI TTERAKME RTVAEAKRQAAEDALAVINQQEDSSESCWNCGRKASETCSCG NTARYCGS FCQHKDWEKHHHICGQTLQAQQGDTPAVSSSVTPNSGAGSP MDTPPAAT PRSTTPGTPSTIETTPR
予測される分子量	88 kDa including tags
領域	38 to 604

#### 特性

Our **Abpromise guarantee** covers the use of **ab152255** in the following tested applications.

The application notes include recommended starting dilutions; optimal dilutions/concentrations should be determined by the end user.

アプリケーション	Western blot SDS-PAGE ELISA
製品の状態	Liquid
備考	This product was previously labelled as RUNX1T1 / ETO.

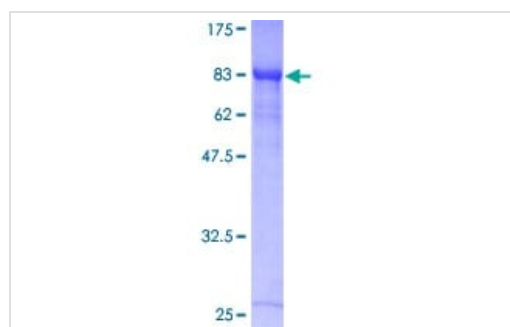
#### 前処理および保存

保存方法および安定性	Shipped on dry ice. Upon delivery aliquot and store at -80°C. Avoid freeze / thaw cycles. pH: 8.00 Constituents: 0.31% Glutathione, 0.79% Tris HCl
------------	--

#### 関連情報

機能	Transcription regulator that exerts its function by binding to histone deacetylases and transcription factors. Can repress transactivation mediated by TCF12.
組織特異性	Most abundantly expressed in brain. Lower levels in lung, heart, testis and ovary.
関連疾患	Note=A chromosomal aberration involving RUNX1T1 is a cause of acute myeloid leukemia (AML-M2). Translocation t(8;21)(q22;q22) with RUNX1/AML1. Defects in RUNX1T1 may be a cause of colorectal cancer (CRC) [MIM:114500].
配列類似性	Belongs to the CBFA2T family. Contains 1 MYND-type zinc finger. Contains 1 TAFH (NHR1) domain.
ドメイン	The TAFH domain mediates interaction with transcription regulators.
細胞内局在	Nucleus.

#### 画像



12.5% SDS-PAGE stained with Coomassie Blue.

SDS-PAGE - Recombinant Human  
RUNX1T1/ETO/CDR protein (ab152255)

**Please note:** All products are "FOR RESEARCH USE ONLY. NOT FOR USE IN DIAGNOSTIC PROCEDURES"

### **Our Abpromise to you: Quality guaranteed and expert technical support**

---

- Replacement or refund for products not performing as stated on the datasheet
- Valid for 12 months from date of delivery
- Response to your inquiry within 24 hours
  
- We provide support in Chinese, English, French, German, Japanese and Spanish
- Extensive multi-media technical resources to help you
- We investigate all quality concerns to ensure our products perform to the highest standards

If the product does not perform as described on this datasheet, we will offer a refund or replacement. For full details of the Abpromise, please visit <https://www.abcam.co.jp/abpromise> or contact our technical team.

### **Terms and conditions**

---

- Guarantee only valid for products bought direct from Abcam or one of our authorized distributors