

### Recombinant human RSK3 protein ab60882

画像数 5

#### 製品の詳細

製品名	Recombinant human RSK3 protein
精製度	> 90 % SDS-PAGE. Purity: >90% as determined by densitometry. Affinity purified.
発現系	Baculovirus infected Sf9 cells
タンパク質長	Full length protein
Animal free	No
由来	Recombinant
生物種	Human

#### 特性

Our **Abpromise guarantee** covers the use of **ab60882** in the following tested applications.

The application notes include recommended starting dilutions; optimal dilutions/concentrations should be determined by the end user.

アプリケーション	SDS-PAGE Functional Studies
製品の状態	Liquid
備考	<b>ab204879</b> (RPS6 peptide) can be utilized as a substrate for assessing kinase activity

#### 前処理および保存

保存方法および安定性	Shipped on dry ice. Upon delivery aliquot and store at -80°C. Avoid freeze / thaw cycles. pH: 7.50 Constituents: 0.0038% EGTA, 0.00174% PMSF, 0.00385% DTT, 0.79% Tris HCl, 0.00292% EDTA, 25% Glycerol (glycerin, glycerine), 0.87% Sodium chloride This product is an active protein and may elicit a biological response in vivo, handle with caution.
------------	--

#### 関連情報

機能	Serine/threonine-protein kinase that acts downstream of ERK (MAPK1/ERK2 and MAPK3/ERK1) signaling and mediates mitogenic and stress-induced activation of transcription
----	---

factors, regulates translation, and mediates cellular proliferation, survival, and differentiation. May function as tumor suppressor in epithelial ovarian cancer cells.

#### 組織特異性

Widely expressed with higher expression in lung, skeletal muscle, brain, uterus, ovary, thyroid and prostate.

#### 配列類似性

Belongs to the protein kinase superfamily. AGC Ser/Thr protein kinase family. S6 kinase subfamily.

Contains 1 AGC-kinase C-terminal domain.

Contains 2 protein kinase domains.

#### 翻訳後修飾

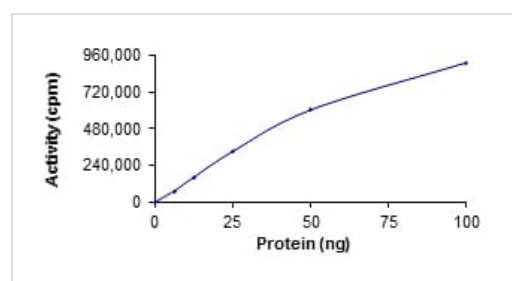
Activated by phosphorylation at Ser-218 by PDPK1. Autophosphorylated on Ser-377, as part of the activation process. May be phosphorylated at Thr-356 and Ser-360 by MAPK1/ERK2 and MAPK3/ERK1.

N-terminal myristoylation results in an activated kinase in the absence of added growth factors.

#### 細胞内局在

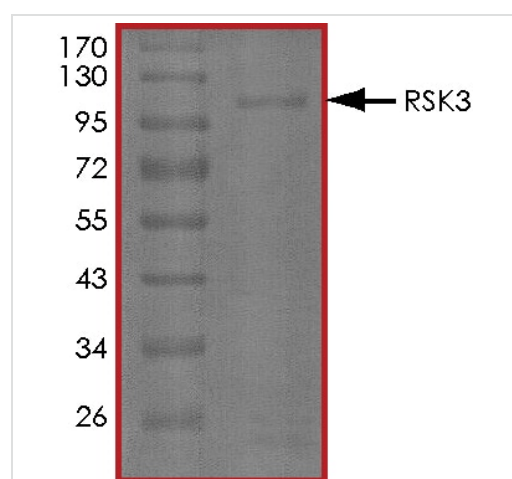
Nucleus. Cytoplasm.

#### 画像



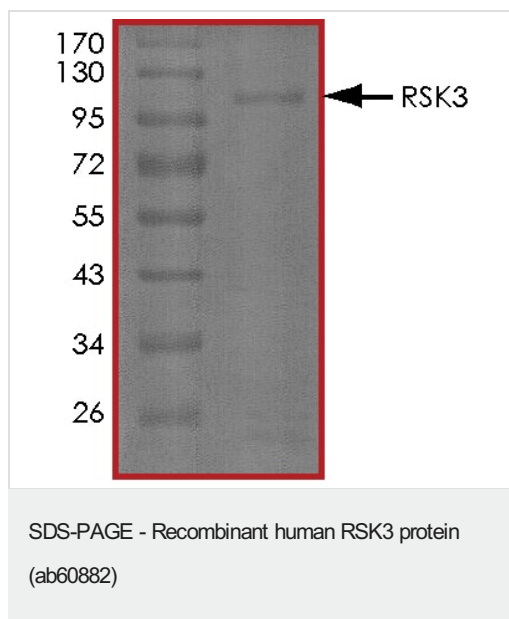
The specific activity of RSK3 (ab60882) was determined to be 150 nmol/min/mg as per activity assay protocol

Functional Studies - Recombinant human RSK3 protein (ab60882)

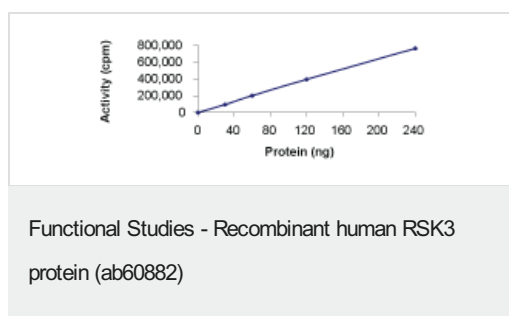


SDS PAGE analysis of ab60882

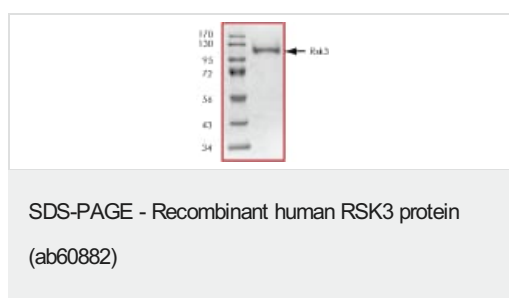
SDS-PAGE - Recombinant human RSK3 protein (ab60882)



SDS PAGE analysis of ab60882



Sample Kinase Activity Plot.



ab60882 on SDS-PAGE, MW ~112 kDa.

**Please note:** All products are "FOR RESEARCH USE ONLY. NOT FOR USE IN DIAGNOSTIC PROCEDURES"

### Our Abpromise to you: Quality guaranteed and expert technical support

- Replacement or refund for products not performing as stated on the datasheet
- Valid for 12 months from date of delivery
- Response to your inquiry within 24 hours
- We provide support in Chinese, English, French, German, Japanese and Spanish
- Extensive multi-media technical resources to help you

- We investigate all quality concerns to ensure our products perform to the highest standards

If the product does not perform as described on this datasheet, we will offer a refund or replacement. For full details of the Abpromise, please visit <https://www.abcam.co.jp/abpromise> or contact our technical team.

### **Terms and conditions**

---

- Guarantee only valid for products bought direct from Abcam or one of our authorized distributors