

Product datasheet

Recombinant human Rsk 2 / MAPKAP Kinase 1b protein ab60881

[1 References](#) [画像数 5](#)

製品の詳細

製品名	Recombinant human Rsk 2 / MAPKAP Kinase 1b protein
精製度	> 90 % SDS-PAGE. Purity: >90% as determined by densitometry. Affinity purified.
発現系	Baculovirus infected Sf9 cells
タンパク質長	Full length protein
Animal free	No
由来	Recombinant
生物種	Human

特性

Our **Abpromise guarantee** covers the use of **ab60881** in the following tested applications.

The application notes include recommended starting dilutions; optimal dilutions/concentrations should be determined by the end user.

アプリケーション	SDS-PAGE Functional Studies
製品の状態	Liquid
備考	ab204879 (RPS6 peptide) can be utilized as a substrate for assessing kinase activity

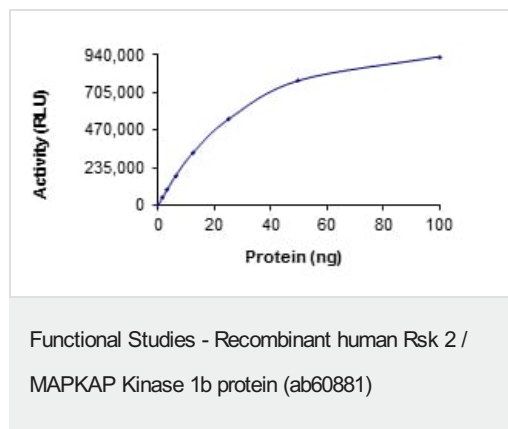
前処理および保存

保存方法および安定性	Shipped on dry ice. Upon delivery aliquot and store at -80°C. Avoid freeze / thaw cycles. pH: 7.50 Constituents: 0.0038% EGTA, 0.00174% PMSF, 0.00385% DTT, 0.79% Tris HCl, 0.00292% EDTA, 25% Glycerol (glycerin, glycerine), 0.87% Sodium chloride This product is an active protein and may elicit a biological response in vivo, handle with caution.
------------	--

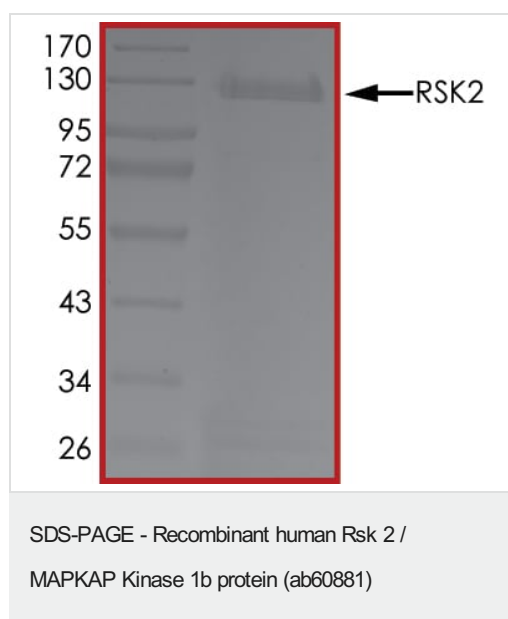
関連情報

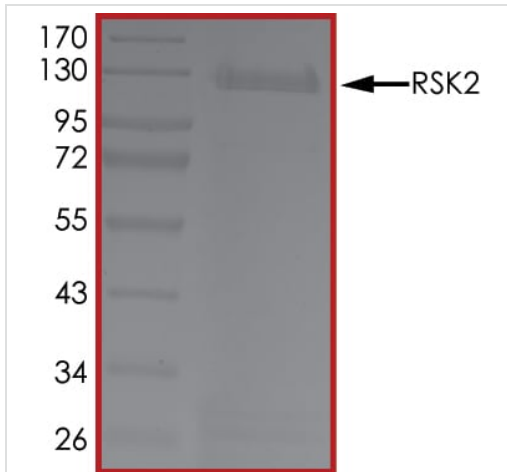
機能	Serine/threonine kinase that may play a role in mediating the growth-factor and stress induced activation of the transcription factor CREB.
組織特異性	Expressed in many tissues, highest levels in skeletal muscle.
関連疾患	Defects in RPS6KA3 are the cause of Coffin-Lowry syndrome (CLS) [MIM:303600]; an X-linked dominant disorder characterized by severe mental retardation with facial and digital dysmorphisms, and progressive skeletal deformations.
配列類似性	Belongs to the protein kinase superfamily. AGC Ser/Thr protein kinase family. S6 kinase subfamily. Contains 1 AGC-kinase C-terminal domain. Contains 2 protein kinase domains.
翻訳後修飾	Autophosphorylated on Ser-386, as part of the activation process. Ser-227 phosphorylation promotes Ser-386 phosphorylation and leads to basal activation. Full activation by growth factors requires additional phosphorylation on Ser-369.

画像



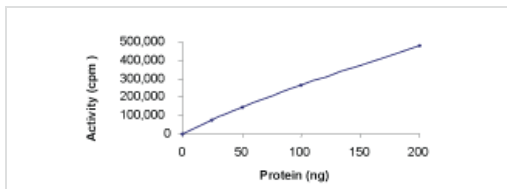
The specific activity of Rsk 2 / MAPKAP Kinase 1b (ab60881) was determined to be 110 nmol/min/mg as per activity assay protocol and was equivalent to 157 nmol/min/mg as per radiometric assay





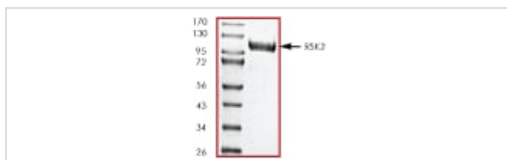
SDS PAGE analysis of ab60881

SDS-PAGE - Recombinant human Rsk 2 /
MAPKAP Kinase 1b protein (ab60881)



Sample Kinase Activity Plot.

Functional Studies - Recombinant human Rsk 2 /
MAPKAP Kinase 1b protein (ab60881)



ab60881 on SDS-PAGE, MW ~112 kDa.

SDS-PAGE - Recombinant human Rsk 2 /
MAPKAP Kinase 1b protein (ab60881)

Please note: All products are "FOR RESEARCH USE ONLY. NOT FOR USE IN DIAGNOSTIC PROCEDURES"

Our Abpromise to you: Quality guaranteed and expert technical support

- Replacement or refund for products not performing as stated on the datasheet
- Valid for 12 months from date of delivery
- Response to your inquiry within 24 hours
- We provide support in Chinese, English, French, German, Japanese and Spanish
- Extensive multi-media technical resources to help you

- We investigate all quality concerns to ensure our products perform to the highest standards

If the product does not perform as described on this datasheet, we will offer a refund or replacement. For full details of the Abpromise, please visit <https://www.abcam.co.jp/abpromise> or contact our technical team.

Terms and conditions

- Guarantee only valid for products bought direct from Abcam or one of our authorized distributors