

# Recombinant Human Raptor protein ab112419

[1 References](#) [画像数 1](#)

### 製品の詳細

製品名	Recombinant Human Raptor protein
発現系	Wheat germ
アクセッション番号	<b><u>Q8N122-2</u></b>
タンパク質長	Full length protein
Animal free	No
由来	Recombinant
生物種	Human
配列	MESEMLQSPLLGLGEEDEADLTDWNLPLAFMKKRHCEKIEGS KSLAQSWR MKDRMKTVSVALVLCNLVGVDPDPPDVVKTTPCARLECWIDPLS MGPQKALE TIGANLQKQYENWQPRARYKQSLDPTVDEVKKLCTSLRRNAK EERVLPHY NGHGVRPRTVNGEVVFNKNYTYIPLSIYDLQTMGSPSIF VYDCSNAG LIVKSFQFALQREQELEVAAINPNHPLAQMPLPPSMKNCIQ LAACEATE LLPMIPDLPADLFTSCLTTPIKIALRWFCMQKCVSLVPGVTL DLIEKIPG RLNDRRTPLGELNWIFTAITDTIAWNVLPDLFQKLFQDLL VASLFRNF LLAERIMRSYNCTPVSSPRLPPTYMHAMW
予測される分子量	68 kDa including tags
領域	1 to 379

### 特性

Our **Abpromise guarantee** covers the use of **ab112419** in the following tested applications.

The application notes include recommended starting dilutions; optimal dilutions/concentrations should be determined by the end user.

アプリケーション	SDS-PAGE
	ELISA
	Western blot
製品の状態	Liquid

## 前処理および保存

### 保存方法および安定性

Shipped on dry ice. Upon delivery aliquot and store at -80°C. Avoid freeze / thaw cycles.

pH: 8.00

Constituents: 0.31% Glutathione, 0.79% Tris HCl

## 関連情報

### 機能

Involved in the control of the mammalian target of rapamycin complex 1 (mTORC1) activity which regulates cell growth and survival, and autophagy in response to nutrient and hormonal signals; functions as a scaffold for recruiting mTORC1 substrates. mTORC1 is activated in response to growth factors or amino-acids. Growth factor-stimulated mTORC1 activation involves a AKT1-mediated phosphorylation of TSC1-TSC2, which leads to the activation of the RHEB GTPase that potentially activates the protein kinase activity of mTORC1. Amino-acid-signaling to mTORC1 requires its relocalization to the lysosomes mediated by the Ragulator complex and the Rag GTPases. Activated mTORC1 up-regulates protein synthesis by phosphorylating key regulators of mRNA translation and ribosome synthesis. mTORC1 phosphorylates EIF4EBP1 and releases it from inhibiting the elongation initiation factor 4E (eIF4E). mTORC1 phosphorylates and activates S6K1 at 'Thr-389', which then promotes protein synthesis by phosphorylating PDCD4 and targeting it for degradation.

### 組織特異性

Highly expressed in skeletal muscle, and in a lesser extent in brain, lung, small intestine, kidney and placenta.

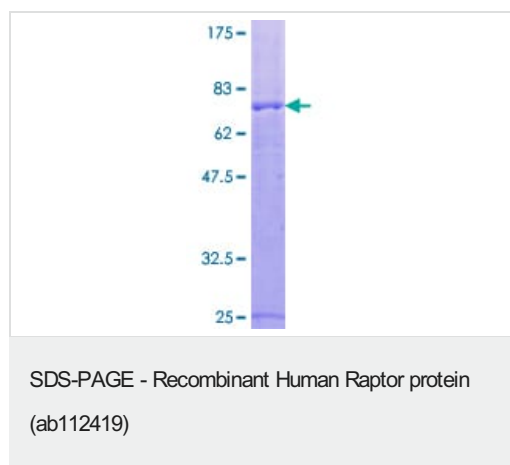
### 配列類似性

Belongs to the WD repeat RAPTOR family.  
Contains 7 WD repeats.

### 細胞内局在

Cytoplasm. Lysosome. Targeting to lysosomes depends on amino acid availability.

## 画像



ab112419 analysed on a 12.5% SDS-PAGE gel stained with Coomassie Blue.

**Please note:** All products are "FOR RESEARCH USE ONLY. NOT FOR USE IN DIAGNOSTIC PROCEDURES"

## Our Abpromise to you: Quality guaranteed and expert technical support

- Replacement or refund for products not performing as stated on the datasheet

- Valid for 12 months from date of delivery
- Response to your inquiry within 24 hours
  
- We provide support in Chinese, English, French, German, Japanese and Spanish
- Extensive multi-media technical resources to help you
- We investigate all quality concerns to ensure our products perform to the highest standards

If the product does not perform as described on this datasheet, we will offer a refund or replacement. For full details of the Abpromise, please visit <https://www.abcam.co.jp/abpromise> or contact our technical team.

### **Terms and conditions**

---

- Guarantee only valid for products bought direct from Abcam or one of our authorized distributors