

Recombinant Human Rad1 protein ab97946

画像数 1

製品の詳細

製品名	Recombinant Human Rad1 protein
精製度	> 85 % SDS-PAGE. ab97946 is purified using conventional chromatography techniques.
発現系	Escherichia coli
アクセッション番号	<u>O60671</u>
タンパク質長	Full length protein
Animal free	No
由来	Recombinant
生物種	Human
配列	<p>MGSSHHHHHHSSGLVPRGSHMPLLTQQIQDEDDQYSLVAS LDNVRNLSTI LKAIHFREHATCFATKNGIKVTVENAKCVQANAFIQAGIFQE FKVQEEVS TFRINLTVLLDCLSI FGSSPMPGTLTALRMCYQGYGYPLMLF LEEGGVVT VCKINTQEPEETLDFDFCSTNVINKIILQSEGLREAFSELD TSEVLQIT MSPDKPYFRLSTFGNAGSSHLDPKSDLMEAFHCNQTQVNR YKISLLKP STKALVLSCKVSIRTDNRGFLSLQYMIRNEDGQICFVEYYCC PDEEVPESE</p>
予測される分子量	34 kDa including tags
領域	1 to 282
タグ	His tag N-Terminus

特性

Our **Abpromise guarantee** covers the use of **ab97946** in the following tested applications.

The application notes include recommended starting dilutions; optimal dilutions/concentrations should be determined by the end user.

アプリケーション	Mass Spectrometry
	SDS-PAGE
製品の状態	Liquid

前処理および保存

保存方法および安定性

Shipped at 4°C. Upon delivery aliquot and store at -20°C or -80°C. Avoid repeated freeze / thaw cycles.

pH: 8.00

Constituents: 0.0154% DTT, 0.316% Tris HCl, 10% Glycerol (glycerin, glycerine), 1.16% Sodium chloride

関連情報

機能

Component of the 9-1-1 cell-cycle checkpoint response complex that plays a major role in DNA repair. The 9-1-1 complex is recruited to DNA lesion upon damage by the RAD17-replication factor C (RFC) clamp loader complex. Acts then as a sliding clamp platform on DNA for several proteins involved in long-patch base excision repair (LP-BER). The 9-1-1 complex stimulates DNA polymerase beta (POLB) activity by increasing its affinity for the 3'-OH end of the primer-template and stabilizes POLB to those sites where LP-BER proceeds; endonuclease FEN1 cleavage activity on substrates with double, nick, or gap flaps of distinct sequences and lengths; and DNA ligase I (LIG1) on long-patch base excision repair substrates. Isoform 1 possesses 3'->5' double stranded DNA exonuclease activity.

組織特異性

Expressed in testis, uterus, bladder, spleen, ovaries, lung, brain and muscle (at protein level).

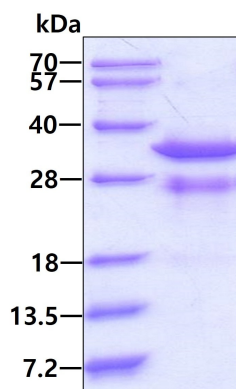
配列類似性

Belongs to the rad1 family.

細胞内局在

Nucleus.

画像



15% SDS-PAGE showing ab97946 at approximately 33.9kDa (3μg).

SDS-PAGE - Recombinant Human Rad1 protein
(ab97946)

Please note: All products are "FOR RESEARCH USE ONLY. NOT FOR USE IN DIAGNOSTIC PROCEDURES"

Our Abpromise to you: Quality guaranteed and expert technical support

- Replacement or refund for products not performing as stated on the datasheet
- Valid for 12 months from date of delivery
- Response to your inquiry within 24 hours

- We provide support in Chinese, English, French, German, Japanese and Spanish
- Extensive multi-media technical resources to help you
- We investigate all quality concerns to ensure our products perform to the highest standards

If the product does not perform as described on this datasheet, we will offer a refund or replacement. For full details of the Abpromise, please visit <https://www.abcam.co.jp/abpromise> or contact our technical team.

Terms and conditions

- Guarantee only valid for products bought direct from Abcam or one of our authorized distributors