

### Recombinant Human RAC3 protein ab103470

画像数 1

#### 製品の詳細

製品名	Recombinant Human RAC3 protein
精製度	> 95 % SDS-PAGE. ab103470 was purified using conventional chromatography techniques.
発現系	Escherichia coli
アクセッション番号	<b><u>P60763</u></b>
タンパク質長	Full length protein
Animal free	No
由来	Recombinant
生物種	Human
配列	MQAIKCVVVGDAVGKTCLLISYTTNAFPGEYIPTVFDNYSA NVMVDGKP VNLGLWDTAGQEDYDRLRPLSYPQTDVFLICFSLVSPASFEN VRAKWYPE VRHHCPTPIILLVGTKLDLRDDKDTIERLRDKKLAPITYPQG LAMAREIG SVKYLECSALTQRGLKTVFDEAIRAVLCPPPVKKPGKKC
予測される分子量	21 kDa
領域	1 to 189

#### 特性

Our **Abpromise guarantee** covers the use of **ab103470** in the following tested applications.

The application notes include recommended starting dilutions; optimal dilutions/concentrations should be determined by the end user.

アプリケーション	SDS-PAGE Mass Spectrometry
質量分析	MALDI-TOF
製品の状態	Liquid

#### 前処理および保存

保存方法および安定性	Shipped at 4°C. Store at +4°C short term (1-2 weeks). Upon delivery aliquot. Store at -20°C or -
------------	--

80°C. Avoid freeze / thaw cycle.

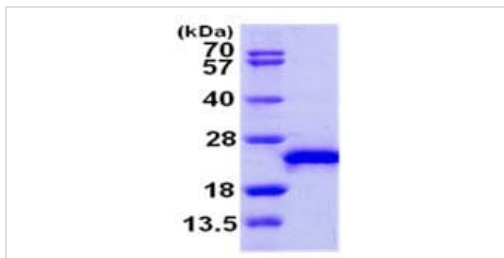
pH: 8.00

Constituents: 0.00174% PMSF, 0.0308% DTT, 0.316% Tris HCl, 0.0292% EDTA, 10% Glycerol (glycerin, glycerine), 1.16% Sodium chloride

## 関連情報

機能	Plasma membrane-associated small GTPase which cycles between an active GTP-bound and inactive GDP-bound state. In active state binds to a variety of effector proteins to regulate cellular responses, such as cell spreading and the formation of actin-based protrusions including lamellipodia and membrane ruffles. Promotes cell adhesion and spreading on fibrinogen in a CIB1 and alpha-IIb/beta3 integrin-mediated manner.
組織特異性	Highest levels in brain, also detected in heart, placenta and pancreas.
配列類似性	Belongs to the small GTPase superfamily. Rho family.
翻訳後修飾	(Microbial infection) Glycosylated at Tyr-32 by Photorehabdus asymbiotica toxin PAU_02230. Mono-O-GlcNAcylation by PAU_02230 inhibits downstream signaling by an impaired interaction with diverse regulator and effector proteins of Rac and leads to actin disassembly.
細胞内局在	Cytoplasm. Endomembrane system. Cell projection, lamellipodium. Cytoplasm, perinuclear region. Cell membrane. Cytoplasm, cytoskeleton. Membrane-associated when activated. Colocalizes with NRBP to endomembranes and at the cell periphery in lamellipodia. Colocalized with CIB1 in the perinuclear area and at the cell periphery.

## 画像



15% SDS-PAGE analysis of 3µg ab103470.

SDS-PAGE - Recombinant Human RAC3 protein  
(ab103470)

**Please note:** All products are "FOR RESEARCH USE ONLY. NOT FOR USE IN DIAGNOSTIC PROCEDURES"

## Our Abpromise to you: Quality guaranteed and expert technical support

- Replacement or refund for products not performing as stated on the datasheet
- Valid for 12 months from date of delivery
- Response to your inquiry within 24 hours
- We provide support in Chinese, English, French, German, Japanese and Spanish
- Extensive multi-media technical resources to help you

- We investigate all quality concerns to ensure our products perform to the highest standards

If the product does not perform as described on this datasheet, we will offer a refund or replacement. For full details of the Abpromise, please visit <https://www.abcam.co.jp/abpromise> or contact our technical team.

### **Terms and conditions**

---

- Guarantee only valid for products bought direct from Abcam or one of our authorized distributors