

Recombinant Human PSME3 protein ab115714

画像数 1

製品の詳細

製品名	Recombinant Human PSME3 protein
精製度	> 90 % SDS-PAGE. ab115714 was purified using conventional chromatography techniques.
発現系	Escherichia coli
アクセッション番号	P61289
タンパク質長	Full length protein
Animal free	No
由来	Recombinant
生物種	Human
配列	MGSSHHHHHHSSGLVPRGSHMASLLKVDQEVKLVDSFRERI TSEAEDLV ANFFPKKLLLEDSFLKEPILNIHDLTQIHSDMNLVPDPILL TNSHDGLD GPTYKKRRRLDECEEFQGTKVFVMPNGMLKSNQQLVDIIEKV KPEIRLLI EKCNTVKMWVQLLIPRIEDGNNFGVSIQEETVAELRTVESEA ASYLDQIS RYYITRAKLVSKIAYPHVEDYRRTVTEIDEKEYISLRLIIS ELRNQYVT LHMILKNIEKIKRPRSSNAETLY
予測される分子量	32 kDa including tags
領域	1 to 254
タグ	His tag N-Terminus

特性

Our **Abpromise guarantee** covers the use of **ab115714** in the following tested applications.

The application notes include recommended starting dilutions; optimal dilutions/concentrations should be determined by the end user.

アプリケーション	SDS-PAGE Mass Spectrometry
質量分析	MALDI-TOF
製品の状態	Liquid

前処理および保存

保存方法および安定性

Shipped at 4°C. Store at +4°C short term (1-2 weeks). Upon delivery aliquot. Store at -20°C or -80°C. Avoid freeze / thaw cycle.

pH: 8.00

Constituents: 0.03% DTT, 0.32% Tris HCl, 40% Glycerol (glycerin, glycerine), 1.17% Sodium chloride

関連情報

機能

Subunit of the 11S REG-gamma (also called PA28-gamma) proteasome regulator, a donut-shaped homoheptamer which associates with the proteasome. 11S REG-gamma activates the trypsin-like catalytic subunit of the proteasome but inhibits the chymotrypsin-like and postglutamyl-preferring (PGPH) subunits. Facilitates the MDM2-p53/TP53 interaction which promotes ubiquitination- and MDM2-dependent proteasomal degradation of p53/TP53, limiting its accumulation and resulting in inhibited apoptosis after DNA damage. May also be involved in cell cycle regulation.

配列類似性

Belongs to the PA28 family.

ドメイン

The C-terminal sequences affect heptamer stability and proteasome affinity.

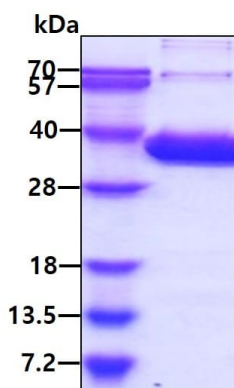
翻訳後修飾

Phosphorylated by MAP3K3.

細胞内局在

Nucleus. Cytoplasm. Localizes to the cytoplasm during mitosis following nuclear envelope breakdown at this distinct stage of the cell cycle which allows its interaction with MAP3K3 kinase.

画像



SDS-PAGE analysis of ab115714 (3µg).

SDS-PAGE - Recombinant Human PSME3 protein
(ab115714)

Please note: All products are "FOR RESEARCH USE ONLY. NOT FOR USE IN DIAGNOSTIC PROCEDURES"

Our Abpromise to you: Quality guaranteed and expert technical support

- Replacement or refund for products not performing as stated on the datasheet
- Valid for 12 months from date of delivery
- Response to your inquiry within 24 hours
- We provide support in Chinese, English, French, German, Japanese and Spanish
- Extensive multi-media technical resources to help you
- We investigate all quality concerns to ensure our products perform to the highest standards

If the product does not perform as described on this datasheet, we will offer a refund or replacement. For full details of the Abpromise, please visit <https://www.abcam.co.jp/abpromise> or contact our technical team.

Terms and conditions

- Guarantee only valid for products bought direct from Abcam or one of our authorized distributors