

# Recombinant Human Proteasome 20S beta 6 protein ab116187

画像数 1

### 製品の詳細

---

|             |   |
|-------------|---|
| 製品名         | Recombinant Human Proteasome 20S beta 6 protein   |
| 精製度         | > 85 % SDS-PAGE.<br>ab116187 was purified using conventional chromatography techniques.   |
| 発現系         | Escherichia coli  |
| アクセッション番号   | <b><u>P28072</u></b>  |
| タンパク質長      | Full length protein   |
| Animal free | No  |
| 由来          | Recombinant   |
| 生物種         | Human   |
| 配列          | <b>MGSSHHHHHSSGLVPRGSHMTTIMAVQFDGGVVLGADSR<br/>TTTGSYIANR<br/>VTDKLTPIHDRI FCCRS GSAADTQAVADAVTYQLGFHSIELN<br/>EPPLVHTA<br/>ASLFKEMCYRYREDLMAGIIIAGWDPQEGGQVYSVPMGGMMV<br/>RQSFAIGG<br/>SGSSYIYGVDATYREGMTKEECLQFTANALALAMERDGSSG<br/>GVIRLAAI AESGVERQVLLGDQIPKFAVATLPPA</b> |
| 予測される分子量    | 24 kDa including tags   |
| 領域          | 35 to 239   |
| タグ          | His tag N-Terminus  |

### 特性

---

Our **Abpromise guarantee** covers the use of **ab116187** in the following tested applications.

The application notes include recommended starting dilutions; optimal dilutions/concentrations should be determined by the end user.

|          |                               |
|----------|-------------------------------|
| アプリケーション | SDS-PAGE<br>Mass Spectrometry |
| 質量分析     | MALDI-TOF                     |
| 製品の状態    | Liquid                        |

### 前処理および保存

---

## 保存方法および安定性

Shipped at 4°C. Store at +4°C short term (1-2 weeks). Upon delivery aliquot. Store at -20°C or -80°C. Avoid freeze / thaw cycle.

pH: 8.00

Constituents: 0.02% DTT, 0.32% Tris HCl, 10% Glycerol (glycerin, glycerine), 0.88% Sodium chloride

---

## 関連情報

### 機能

The proteasome is a multicatalytic proteinase complex which is characterized by its ability to cleave peptides with Arg, Phe, Tyr, Leu, and Glu adjacent to the leaving group at neutral or slightly basic pH. The proteasome has an ATP-dependent proteolytic activity. This unit is responsible of the peptidyl glutamyl-like activity. May catalyze basal processing of intracellular antigens.

### 配列類似性

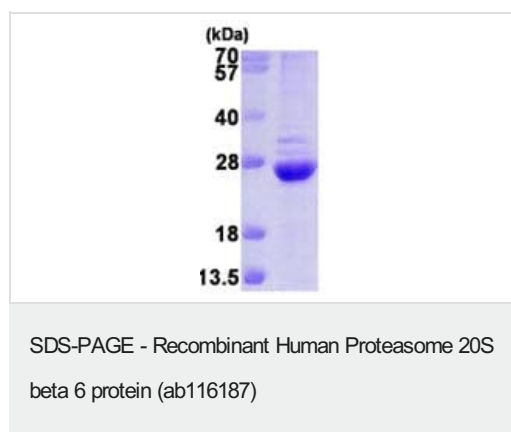
Belongs to the peptidase T1B family.

### 細胞内局在

Cytoplasm. Nucleus.

---

## 画像



ab116187 (3µg) analysed on a 15% SDS-PAGE gel.

**Please note:** All products are "FOR RESEARCH USE ONLY. NOT FOR USE IN DIAGNOSTIC PROCEDURES"

---

## Our Abpromise to you: Quality guaranteed and expert technical support

- Replacement or refund for products not performing as stated on the datasheet
- Valid for 12 months from date of delivery
- Response to your inquiry within 24 hours
- We provide support in Chinese, English, French, German, Japanese and Spanish
- Extensive multi-media technical resources to help you
- We investigate all quality concerns to ensure our products perform to the highest standards

If the product does not perform as described on this datasheet, we will offer a refund or replacement. For full details of the Abpromise, please visit <https://www.abcam.co.jp/abpromise> or contact our technical team.

## Terms and conditions

---

- Guarantee only valid for products bought direct from Abcam or one of our authorized distributors