

Recombinant human Prorenin protein (Active) ab93266

3 References [画像数 1](#)

製品の詳細

製品名	Recombinant human Prorenin protein (Active)
生理活性	Fully activatable to renin by catalytic amounts of trypsin. ab93266 is > 95% active.
精製度	> 95 % SDS-PAGE. ab93266 is purified by affinity chromatography.
発現系	HEK 293 cells
アクセッション番号	<u>P00797</u>
タンパク質長	Full length protein
Animal free	No
由来	Recombinant
生物種	Human
予測される分子量	44 kDa

特性

Our **Abpromise guarantee** covers the use of **ab93266** in the following tested applications.

The application notes include recommended starting dilutions; optimal dilutions/concentrations should be determined by the end user.

アプリケーション	SDS-PAGE
製品の状態	Liquid
備考	Extinction coefficient: 1.1 UV Absorbance (280 nm)=0.99

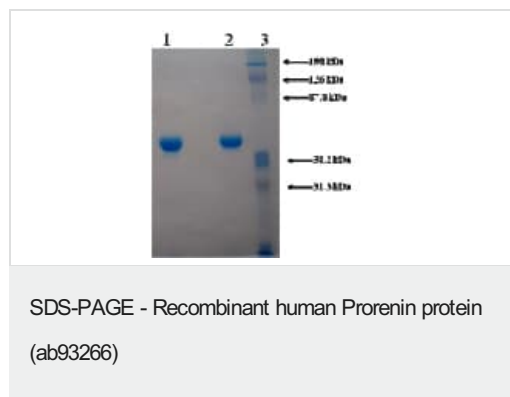
前処理および保存

保存方法および安定性	Shipped on dry ice. Upon delivery aliquot and store at -80°C. Avoid freeze / thaw cycles. pH: 8.00 Constituents: 0.79% Tris HCl, 0.29% Sodium chloride This product is an active protein and may elicit a biological response in vivo, handle with caution.
------------	----------------------------------------------------------------------------------------------------------------------------------------------------------------------------------------------------------------------------------------------------------------------

関連情報

機能	Renin is a highly specific endopeptidase, whose only known function is to generate angiotensin I from angiotensinogen in the plasma, initiating a cascade of reactions that produce an elevation of blood pressure and increased sodium retention by the kidney.
関連疾患	Defects in REN are a cause of renal tubular dysgenesis (RTD) [MIM:267430]. RTD is an autosomal recessive severe disorder of renal tubular development characterized by persistent fetal anuria and perinatal death, probably due to pulmonary hypoplasia from early-onset oligohydramnios (the Potter phenotype). Defects in REN are the cause of familial juvenile hyperuricemic nephropathy type 2 (HNFJ2) [MIM:613092]. It is a renal disease characterized by juvenile onset of hyperuricemia, slowly progressive renal failure and anemia.
配列類似性	Belongs to the peptidase A1 family.
細胞内局在	Secreted. Membrane. Associated to membranes via binding to ATP6AP2.

画像



3 ug of ab93266 on 10% SDS-PAGE.

Lane 1: Non-reduced

Lane 2: Reduced

Lane 3: Prestained Standard

Please note: All products are "FOR RESEARCH USE ONLY. NOT FOR USE IN DIAGNOSTIC PROCEDURES"

Our Abpromise to you: Quality guaranteed and expert technical support

- Replacement or refund for products not performing as stated on the datasheet
- Valid for 12 months from date of delivery
- Response to your inquiry within 24 hours
- We provide support in Chinese, English, French, German, Japanese and Spanish
- Extensive multi-media technical resources to help you
- We investigate all quality concerns to ensure our products perform to the highest standards

If the product does not perform as described on this datasheet, we will offer a refund or replacement. For full details of the Abpromise, please visit <https://www.abcam.co.jp/abpromise> or contact our technical team.

Terms and conditions

- Guarantee only valid for products bought direct from Abcam or one of our authorized distributors