

### Recombinant human PRKACG protein ab60838

画像数 5

#### 製品の詳細

|             |  |
|-------------|--|
| 製品名         | Recombinant human PRKACG protein           |
| 精製度         | > 60 % Densitometry.<br>Affinity purified. |
| 発現系         | Baculovirus infected Sf9 cells             |
| タンパク質長      | Full length protein                        |
| Animal free | No   |
| 由来          | Recombinant                                |
| 生物種         | Human                                      |
| タグ          | GST tag N-Terminus                         |

#### 特性

Our **Abpromise guarantee** covers the use of **ab60838** in the following tested applications.

The application notes include recommended starting dilutions; optimal dilutions/concentrations should be determined by the end user.

|          |  |
|----------|--|
| アプリケーション | Functional Studies<br>SDS-PAGE   |
| 製品の状態    | Liquid   |
| 備考       | <b>ab204856</b> (CREB peptide) can be utilized as a substrate for assessing kinase activity<br>This product was previously labelled as PKA gamma (catalytic subunit) |

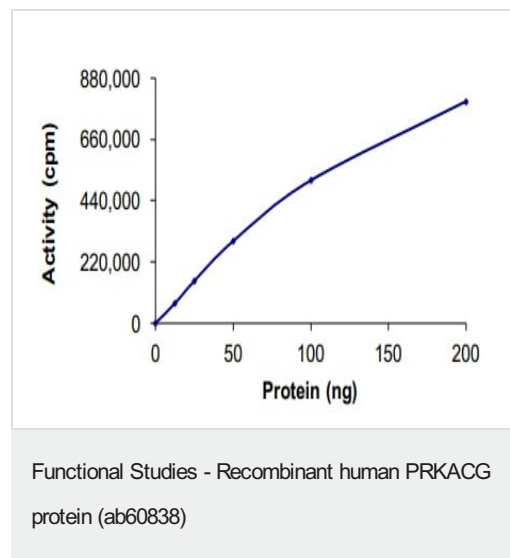
#### 前処理および保存

|            |  |
|------------|--|
| 保存方法および安定性 | Shipped on dry ice. Upon delivery aliquot and store at -80°C. Avoid freeze / thaw cycles.<br>pH: 7.50<br>Constituents: 0.0038% EGTA, 0.00174% PMSF, 0.00385% DTT, 0.79% Tris HCl, 0.00292% EDTA, 25% Glycerol (glycerin, glycerine), 0.87% Sodium chloride<br>This product is an active protein and may elicit a biological response in vivo, handle with caution. |
|------------|--|

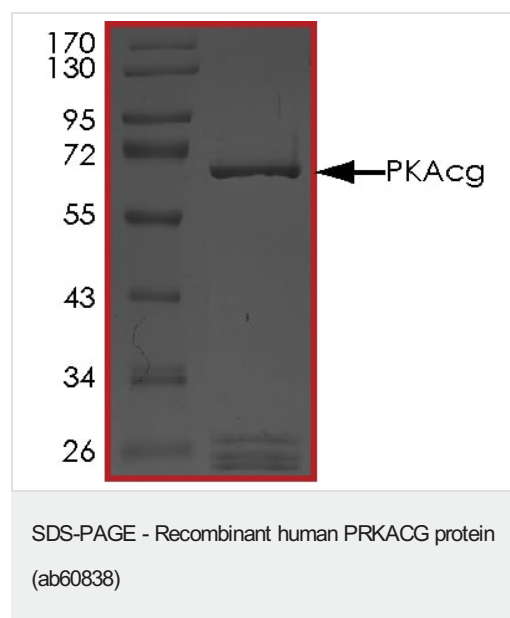
## 関連情報

|       |  |
|-------|--|
| 機能    | Phosphorylates a large number of substrates in the cytoplasm and the nucleus.  |
| 組織特異性 | Testis specific. But important tissues such as brain and ovary have not been analyzed for the content of transcript.   |
| 配列類似性 | Belongs to the protein kinase superfamily. AGC Ser/Thr protein kinase family. cAMP subfamily.<br>Contains 1 AGC-kinase C-terminal domain.<br>Contains 1 protein kinase domain. |

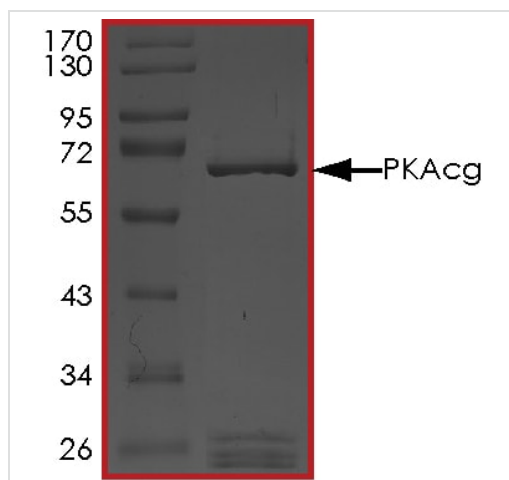
## 画像



The specific activity of PRKACG (ab60838) was determined to be 174 nmol/min/mg as per activity assay protocol

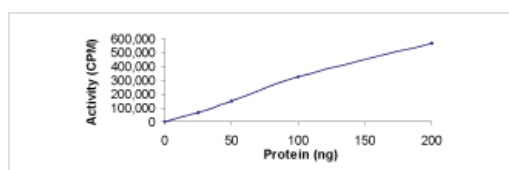


SDS PAGE analysis of ab60838



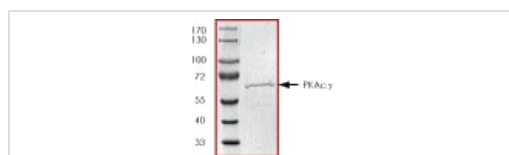
SDS PAGE analysis of ab60838

SDS-PAGE - Recombinant human PRKACG protein (ab60838)



Sample Kinase Activity Plot.

Functional Studies - Recombinant human PRKACG protein (ab60838)



ab60838 on SDS-PAGE, MW ~65 kDa.

SDS-PAGE - Recombinant human PRKACG protein (ab60838)

**Please note:** All products are "FOR RESEARCH USE ONLY. NOT FOR USE IN DIAGNOSTIC PROCEDURES"

### Our Abpromise to you: Quality guaranteed and expert technical support

- Replacement or refund for products not performing as stated on the datasheet
- Valid for 12 months from date of delivery
- Response to your inquiry within 24 hours
- We provide support in Chinese, English, French, German, Japanese and Spanish

- Extensive multi-media technical resources to help you
- We investigate all quality concerns to ensure our products perform to the highest standards

If the product does not perform as described on this datasheet, we will offer a refund or replacement. For full details of the Abpromise, please visit <https://www.abcam.co.jp/abpromise> or contact our technical team.

#### **Terms and conditions**

---

- Guarantee only valid for products bought direct from Abcam or one of our authorized distributors