

Recombinant human PPP1A/PPP1CA protein ab113150

画像数 1

製品の詳細

製品名	Recombinant human PPP1A/PPP1CA protein
生理活性	>3,000 units/mg. Enzymatic activity was confirmed by measuring the amount of enzyme hydrolyzing 1 nmole of p-nitrophenyl phosphate (pNPP) per minute at 37 °C, pH 7.5, using 10 mM of substrate.
精製度	> 80 % SDS-PAGE. ab113150 was purified using conventional chromatography techniques.
発現系	Escherichia coli
アクセッション番号	P62136
タンパク質長	Full length protein
Animal free	No
由来	Recombinant
生物種	Human
予測される分子量	40 kDa including tags
領域	1 to 330
タグ	His tag N-Terminus

特性

Our **Abpromise guarantee** covers the use of **ab113150** in the following tested applications.

The application notes include recommended starting dilutions; optimal dilutions/concentrations should be determined by the end user.

アプリケーション	SDS-PAGE
	Mass Spectrometry
	Functional Studies
質量分析	MALDI-TOF
製品の状態	Liquid

備考

This product was previously labelled as PPP1A

前処理および保存

保存方法および安定性

Shipped at 4°C. Store at +4°C short term (1-2 weeks). Upon delivery aliquot. Store at -20°C or -80°C. Avoid freeze / thaw cycle.

pH: 8.5

Constituents: 0.002% PMSF, 0.02% DTT, 0.79% Tris HCl, 50% Glycerol (glycerin, glycerine), 0.88% Sodium chloride, 0.01% Manganese chloride

This product is an active protein and may elicit a biological response in vivo, handle with caution.

関連情報

機能

Protein phosphatase 1 (PP1) is essential for cell division, and participates in the regulation of glycogen metabolism, muscle contractility and protein synthesis. Involved in regulation of ionic conductances and long-term synaptic plasticity. May play an important role in dephosphorylating substrates such as the postsynaptic density-associated Ca(2+)/calmodulin dependent protein kinase II. Component of the PTW/PP1 phosphatase complex, which plays a role in the control of chromatin structure and cell cycle progression during the transition from mitosis into interphase.

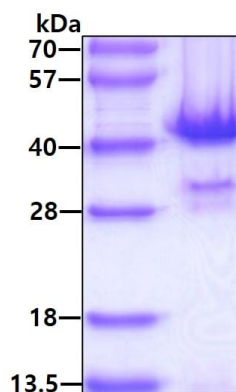
配列類似性

Belongs to the PPP phosphatase family. PP-1 subfamily.

細胞内局在

Cytoplasm. Nucleus. Nucleus > nucleoplasm. Nucleus > nucleolus. Primarily nuclear and largely excluded from the nucleolus. Highly mobile in cells and can be relocalized through interaction with targeting subunits. NOM1 plays a role in targeting this protein to the nucleolus. In the presence of PPP1R8 relocalizes from the nucleus to nuclear speckles.

画像



SDS-PAGE showing ab113150 (3 µg) under reducing conditions with coomassie blue protein stain

SDS-PAGE - Recombinant human PPP1A/PPP1CA protein (ab113150)

Please note: All products are "FOR RESEARCH USE ONLY. NOT FOR USE IN DIAGNOSTIC PROCEDURES"

Our Abpromise to you: Quality guaranteed and expert technical support

- Replacement or refund for products not performing as stated on the datasheet
- Valid for 12 months from date of delivery
- Response to your inquiry within 24 hours
- We provide support in Chinese, English, French, German, Japanese and Spanish
- Extensive multi-media technical resources to help you
- We investigate all quality concerns to ensure our products perform to the highest standards

If the product does not perform as described on this datasheet, we will offer a refund or replacement. For full details of the Abpromise, please visit <https://www.abcam.co.jp/abpromise> or contact our technical team.

Terms and conditions

- Guarantee only valid for products bought direct from Abcam or one of our authorized distributors