

Recombinant human PPIL4 protein ab101207

画像数 1

製品の詳細

製品名	Recombinant human PPIL4 protein
生理活性	Specific activity is > 190 nmoles/min/mg, and is defined as the amount of enzyme that cleaves 1 µmole of suc-AAPF-pNA per minute at 37°C in Tris-Hcl pH8.0 using chymotrypsin.
精製度	> 85 % SDS-PAGE. ab101207 was purified using conventional chromatography and is >85 % pure by SDS-PAGE.
発現系	Escherichia coli
アクセッション番号	<u>Q8WUA2</u>
タンパク質長	Full length protein
Animal free	No
由来	Recombinant
生物種	Human
配列	MGSSHHHHHSSGLVPRGSHMAVLLLETTLGDVVIDLYTEERP RACLNFLK LCKIKYNYNCLIHNVQRDFIIQTGDPTGTGRGGESIFGQLYG DQASFFEA EKVPRIKHKKKGTVSMVNNGSDQHGSQFLITTGENLDYLDGV HTVFG EVT EGMDI IKKINETFVDKDFVPYQDIRINHTVILDDPFDDPPDL LIPDRSPE PTREQLDSGRIGADEEIDDFKGRSAEEVEEIKAEKEAKTQAI LLEMVGDL PDADIKPPENVL FVCKLNPVTTDEDLEIIFSRFGPIRSCEVI RDWKTGES LCYAFIEFEKEEDCEKAFFKMDNVLIDDRRIHVDFSQSVAKV KWKGKGGK YTKSDFKEYEKEQDKPPNLV LKDKVKPKQDTKYDLILDEQAE DSKSSSH TSKKHKKKTHHCSEEKEDDYMPIKNTNQDIYREMGFGHYEE EESCWEKQ KSEKRDRTQNRSRSRERDGHYSNSHKSQYQTDLYERERSK KRDRSRSP KSKDKKESKYR
予測される分子量	59 kDa including tags
領域	1 to 512

特性

Our **Abpromise guarantee** covers the use of **ab101207** in the following tested applications.

The application notes include recommended starting dilutions; optimal dilutions/concentrations should be determined by the end user.

アプリケーション	Mass Spectrometry SDS-PAGE Functional Studies
質量分析	MALDI-TOF
製品の状態	Liquid

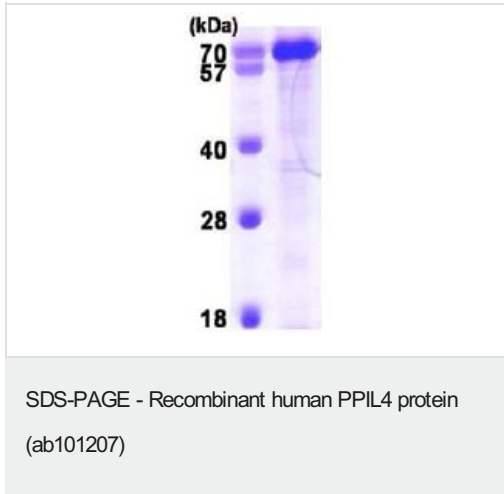
前処理および保存

保存方法および安定性	Shipped at 4°C. Store at +4°C short term (1-2 weeks). Upon delivery aliquot. Store at -20°C or -80°C. Avoid freeze / thaw cycle. pH: 8.00 Constituents: 0.0308% DTT, 0.316% Tris HCl, 10% Glycerol (glycerin, glycerine), 0.58% Sodium chloride This product is an active protein and may elicit a biological response in vivo, handle with caution.
------------	---

関連情報

機能	PPases accelerate the folding of proteins. It catalyzes the cis-trans isomerization of proline imidic peptide bonds in oligopeptides.
組織特異性	Abundantly expressed in kidney but has a ubiquitously low expression pattern in other adult tissues.
配列類似性	Belongs to the cyclophilin-type PPase family. PPIL4 subfamily. Contains 1 PPase cyclophilin-type domain. Contains 1 RRM (RNA recognition motif) domain.
細胞内局在	Nucleus.

画像



ab101207 (3 µg) analysed by 15% SDS PAGE.

Molecular size on SDS-PAGE will appear higher than the predicted molecular weight of 59.4 kDa.

Please note: All products are "FOR RESEARCH USE ONLY. NOT FOR USE IN DIAGNOSTIC PROCEDURES"

Our Abpromise to you: Quality guaranteed and expert technical support

- Replacement or refund for products not performing as stated on the datasheet
- Valid for 12 months from date of delivery
- Response to your inquiry within 24 hours
- We provide support in Chinese, English, French, German, Japanese and Spanish
- Extensive multi-media technical resources to help you
- We investigate all quality concerns to ensure our products perform to the highest standards

If the product does not perform as described on this datasheet, we will offer a refund or replacement. For full details of the Abpromise, please visit <https://www.abcam.co.jp/abpromise> or contact our technical team.

Terms and conditions

- Guarantee only valid for products bought direct from Abcam or one of our authorized distributors