

Recombinant Human PP-X protein ab114692

画像数 1

製品の詳細

製品名	Recombinant Human PP-X protein
発現系	Wheat germ
アクセッション番号	P60510
タンパク質長	Full length protein
Animal free	No
由来	Recombinant
生物種	Human
配列	MAEISDLDRQIEQLRRCELIKESVKALCAKAREILVEESNV QRVDSPVT VCGDIHGQFYDLKELFRVGGDVPETNYLFMGDFVDRGFYSVE TFLLLLAL KVRYPDRITLIRGNHESRQITQVYGFYDECLRKYGSVTVWRY CTEIFDYL SLSAIIIDGKIFCVHGGLSPSIQTLDQIRTIDRKQEVPHDGPM CDLLWSDP EDTTGWGVSPRGAGYLFGSDVVAQFNAANDIDMICRAHQLVM EGYKWHFN ETVLTVWSAPNYCYRCGNVAAILELDEHLQKDFIIFEAAPQE TRGIPSKK PVADYFL
予測される分子量	60 kDa including tags
領域	1 to 308

特性

Our Abpromise guarantee covers the use of ab114692 in the following tested applications.	
The application notes include recommended starting dilutions; optimal dilutions/concentrations should be determined by the end user.	
アプリケーション	ELISA Western blot SDS-PAGE
製品の状態	Liquid

保存方法および安定性

Shipped on dry ice. Upon delivery aliquot and store at -80°C. Avoid freeze / thaw cycles.

pH: 8.00

Constituents: 0.3% Glutathione, 0.79% Tris HCl

関連情報

機能

Protein phosphatase that is involved in many processes such as microtubule organization at centrosomes, maturation of spliceosomal snRNPs, apoptosis, DNA repair, tumor necrosis factor (TNF)-alpha signaling, activation of c-Jun N-terminal kinase MAPK8, regulation of histone acetylation, DNA damage checkpoint signaling, NF-kappa-B activation and cell migration. The PPP4C-PPP4R1 PP4 complex may play a role in dephosphorylation and regulation of HDAC3. The PPP4C-PPP4R2-PPP4R3A PP4 complex specifically dephosphorylates H2AFX phosphorylated on Ser-140 (gamma-H2AFX) generated during DNA replication and required for DNA double strand break repair. Dephosphorylates NDEL1 at CDK1 phosphorylation sites and negatively regulates CDK1 activity in interphase (By similarity). In response to DNA damage, catalyzes RPA2 dephosphorylation, an essential step for DNA repair since it allows the efficient RPA2-mediated recruitment of RAD51 to chromatin.

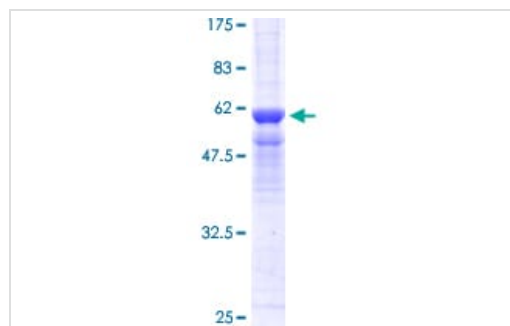
配列類似性

Belongs to the PPP phosphatase family. PP-4 (PP-X) subfamily.

細胞内局在

Cytoplasm. Nucleus. Cytoplasm > cytoskeleton > centrosome.

画像



12.5% SDS-PAGE showing ab114692 at approximately 59.51kDa stained with Coomassie Blue.

SDS-PAGE - Recombinant Human PP-X protein
(ab114692)

Please note: All products are "FOR RESEARCH USE ONLY. NOT FOR USE IN DIAGNOSTIC PROCEDURES"

Our Abpromise to you: Quality guaranteed and expert technical support

- Replacement or refund for products not performing as stated on the datasheet
- Valid for 12 months from date of delivery
- Response to your inquiry within 24 hours
- We provide support in Chinese, English, French, German, Japanese and Spanish
- Extensive multi-media technical resources to help you

- We investigate all quality concerns to ensure our products perform to the highest standards

If the product does not perform as described on this datasheet, we will offer a refund or replacement. For full details of the Abpromise, please visit <https://www.abcam.co.jp/abpromise> or contact our technical team.

Terms and conditions

- Guarantee only valid for products bought direct from Abcam or one of our authorized distributors