

Recombinant human PLK3 protein ab125627

画像数 4

製品の詳細

製品名	Recombinant human PLK3 protein
生理活性	The specific activity of PLK3 was determined to be 2.2 nmol/min/mg.
精製度	> 75 % Densitometry. Affinity purified.
発現系	Baculovirus infected Sf9 cells
アクセッション番号	<u>Q9H4B4</u>
タンパク質長	Protein fragment
Animal free	No
由来	Recombinant
生物種	Human
予測される分子量	60 kDa including tags
領域	57 to 340

特性

Our **Abpromise guarantee** covers the use of **ab125627** in the following tested applications.

The application notes include recommended starting dilutions; optimal dilutions/concentrations should be determined by the end user.

アプリケーション	Western blot Functional Studies SDS-PAGE
製品の状態	Liquid
備考	<u>ab91090</u> (Cow Casein full length protein) can be utilized as a substrate for assessing Kinase activity

前処理および保存

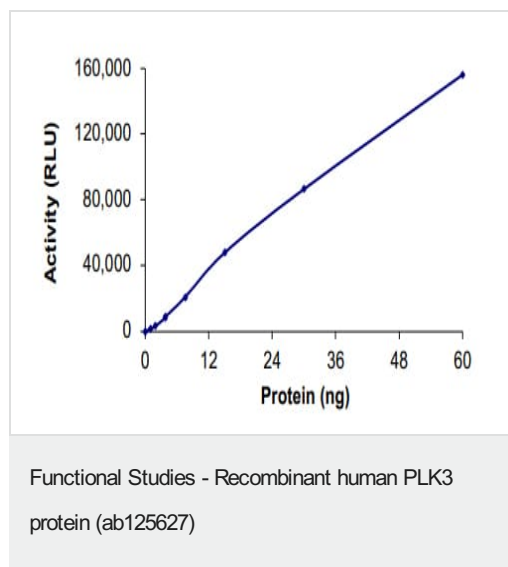
保存方法および安定性	Shipped on dry ice. Upon delivery aliquot and store at -80°C. Avoid freeze / thaw cycles. pH: 7.50 Constituents: 0.31% Glutathione, 0.002% PMSF, 0.004% DTT, 0.79% Tris HCl, 0.003% EDTA, 25% Glycerol (glycerin, glycerine), 0.88% Sodium chloride
------------	---

This product is an active protein and may elicit a biological response in vivo, handle with caution.

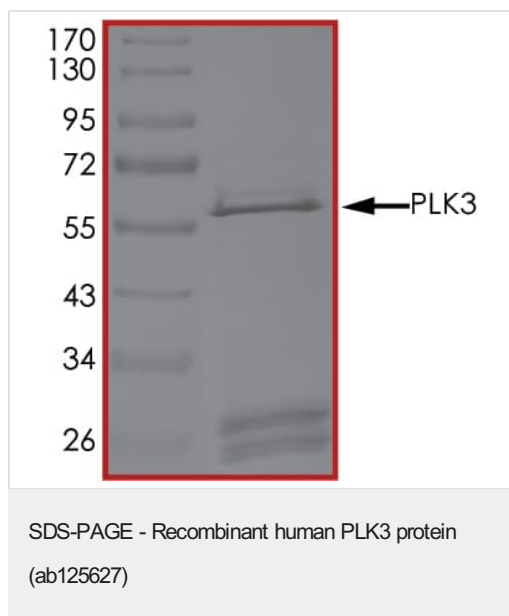
関連情報

機能	Serine/threonine protein kinase involved in regulating M phase functions during the cell cycle. May also be part of the signaling network controlling cellular adhesion. In vitro, is able to phosphorylate CDC25C and casein.
組織特異性	Transcripts are highly detected in placenta, lung, followed by skeletal muscle, heart, pancreas, ovaries and kidney and weakly detected in liver and brain. May have a short half-life. In cells of hematopoietic origin, strongly and exclusively detected in terminally differentiated macrophages. Transcript expression appears to be down-regulated in primary lung tumor.
配列類似性	Belongs to the protein kinase superfamily. Ser/Thr protein kinase family. CDC5/Polo subfamily. Contains 2 POLO box domains. Contains 1 protein kinase domain.
翻訳後修飾	Phosphorylated as cells enter mitosis and dephosphorylated as cells exit mitosis.
細胞内局在	Membrane.

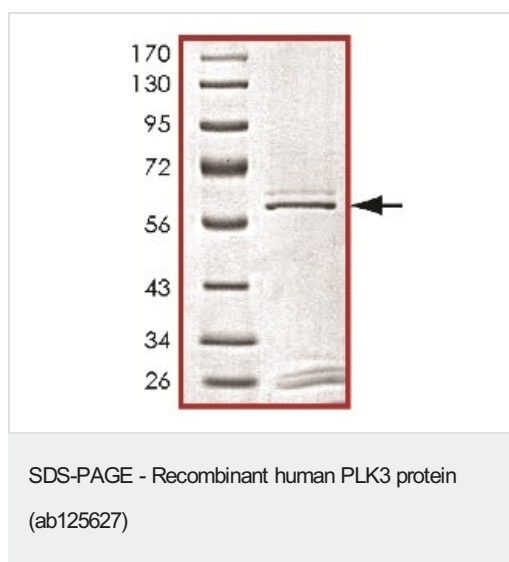
画像



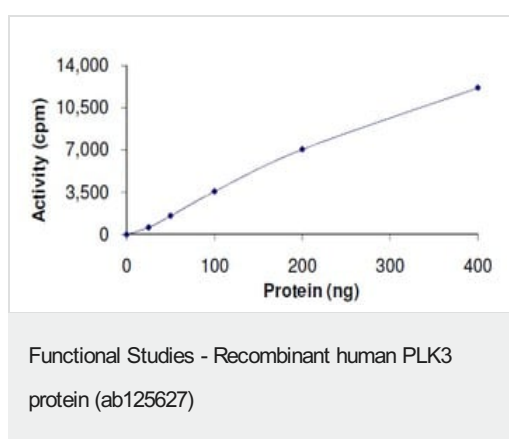
The specific activity of PLK3 (ab125627) was determined to be 9 nmol/min/mg as per activity assay protocol and was equivalent to 2.2 nmol/min/mg as per radiometric assay



SDS PAGE analysis of ab125627



SDS-PAGE of Human PLK3 protein.



The specific activity of ab125627 was determined to be 2.2 nmol/min/mg.

Please note: All products are "FOR RESEARCH USE ONLY. NOT FOR USE IN DIAGNOSTIC PROCEDURES"

Our Abpromise to you: Quality guaranteed and expert technical support

- Replacement or refund for products not performing as stated on the datasheet
- Valid for 12 months from date of delivery
- Response to your inquiry within 24 hours
- We provide support in Chinese, English, French, German, Japanese and Spanish
- Extensive multi-media technical resources to help you
- We investigate all quality concerns to ensure our products perform to the highest standards

If the product does not perform as described on this datasheet, we will offer a refund or replacement. For full details of the Abpromise, please visit <https://www.abcam.co.jp/abpromise> or contact our technical team.

Terms and conditions

- Guarantee only valid for products bought direct from Abcam or one of our authorized distributors