

Recombinant Human PLA2G1B protein ab63842

画像数 1

製品の詳細

製品名	Recombinant Human PLA2G1B protein
精製度	> 95 % SDS-PAGE.
発現系	Escherichia coli
アクセッション番号	<u>P04054</u>
タンパク質長	Protein fragment
Animal free	No
由来	Recombinant
生物種	Human
配列	MRGSHHHHHH GMASHMAVWQ FRKMIKCVIP GSDPFLEYNN YGCYCGLGGS GTPVDELDKC CQTHDNCYDQ AKKLDSCCKFL LDNPYTHYTS YSCSGSAITC SSKNKECEAF ICNCDRNAAI CFSKAPYNKA HKNLDTKKYC QS
領域	23 to 148
タグ	His tag N-Terminus
配列の追加情報	Total 142 AA. MW: 16 kDa (calculated). N-Terminal His-tag, 16 extra AA

特性

Our **Abpromise guarantee** covers the use of **ab63842** in the following tested applications.

The application notes include recommended starting dilutions; optimal dilutions/concentrations should be determined by the end user.

アプリケーション	Western blot
製品の状態	Lyophilized
備考	Product is NOT sterile! Please filter the product by an appropriate sterile filter before using it in cell culture.

前処理および保存

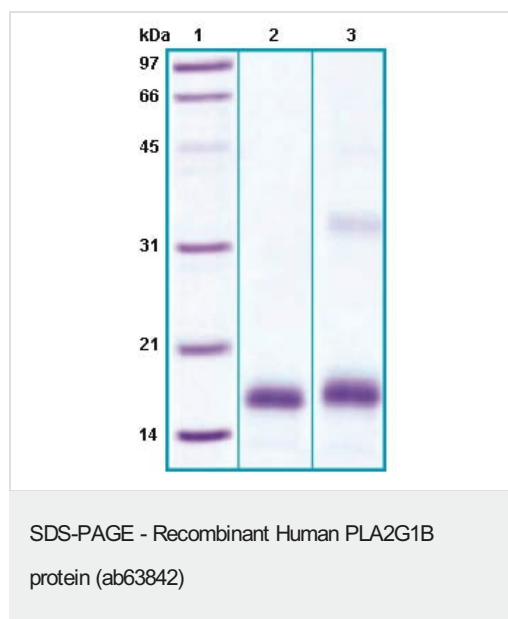
保存方法および安定性	Shipped at 4°C. Upon delivery aliquot. Store at -80°C. Avoid freeze / thaw cycle. Constituent: 0.41% Sodium acetate
------------	------------------------------------------------------------------------------------------------------------------------

再構成	Add 0.1M Acetate buffer pH4 to prepare a working stock solution of approximately 0.5 mg/ml and let the lyophilized pellet dissolve completely. For conversion into higher pH value, we recommend intensive dilution by relevant buffer to a concentration of 10µg/ml. In higher concentrations the solubility of this antigen is limited.
------------	-------------------------------------------------------------------------------------------------------------------------------------------------------------------------------------------------------------------------------------------------------------------------------------------------------------------------------------------

関連情報

機能	PA2 catalyzes the calcium-dependent hydrolysis of the 2-acyl groups in 3-sn-phosphoglycerides.
配列類似性	Belongs to the phospholipase A2 family.
細胞内局在	Secreted.

画像



12% SDS-PAGE separation of ab63842. Molecular Weight: ~16 kDa.

Lane 1. Molecular weight marker

Lane 2. reduced and heated sample, 5µg/lane

Lane 3. non-reduced and non-heated sample, 5µg/lane

Please note: All products are "FOR RESEARCH USE ONLY. NOT FOR USE IN DIAGNOSTIC PROCEDURES"

Our Abpromise to you: Quality guaranteed and expert technical support

- Replacement or refund for products not performing as stated on the datasheet
- Valid for 12 months from date of delivery
- Response to your inquiry within 24 hours
- We provide support in Chinese, English, French, German, Japanese and Spanish
- Extensive multi-media technical resources to help you
- We investigate all quality concerns to ensure our products perform to the highest standards

If the product does not perform as described on this datasheet, we will offer a refund or replacement. For full details of the Abpromise, please visit <https://www.abcam.co.jp/abpromise> or contact our technical team.

Terms and conditions

- Guarantee only valid for products bought direct from Abcam or one of our authorized distributors