

### Recombinant human PKN3 protein ab125615

画像数 5

#### 製品の詳細

製品名	Recombinant human PKN3 protein
生理活性	The specific activity of ab125615 was determined to be 3 nmol/mg/min.
精製度	> 75 % Densitometry. Affinity purified.
発現系	Baculovirus infected Sf9 cells
アクセッション番号	<b><u>Q6P5Z2</u></b>
タンパク質長	Full length protein
Animal free	No
由来	Recombinant
生物種	Human
予測される分子量	130 kDa including tags
領域	1 to 889
タグ	GST tag N-Terminus

#### 特性

Our **Abpromise guarantee** covers the use of **ab125615** in the following tested applications.

The application notes include recommended starting dilutions; optimal dilutions/concentrations should be determined by the end user.

アプリケーション	Western blot Functional Studies SDS-PAGE
製品の状態	Liquid
備考	<b><u>ab204879</u></b> (RPS6 peptide) can be utilized as a substrate for assessing kinase activity This product was previously labelled as PKN beta

#### 前処理および保存

保存方法および安定性	Shipped on dry ice. Upon delivery aliquot and store at -80°C. Avoid freeze / thaw cycles.
------------	---

pH: 7.50

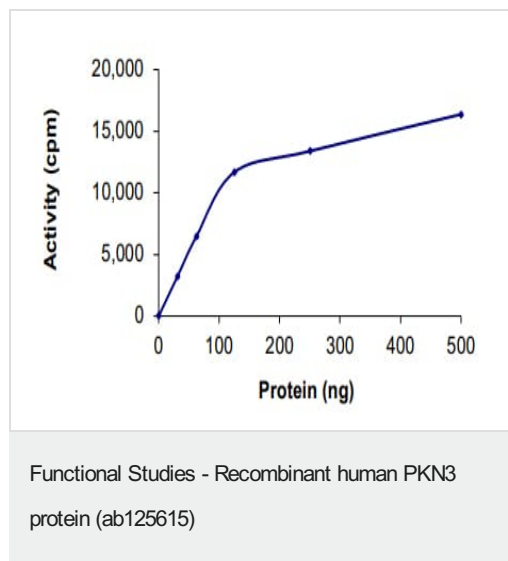
Constituents: 0.31% Glutathione, 0.002% PMSF, 0.004% DTT, 0.79% Tris HCl, 0.003% EDTA, 25% Glycerol (glycerin, glycerine), 0.88% Sodium chloride

This product is an active protein and may elicit a biological response in vivo, handle with caution.

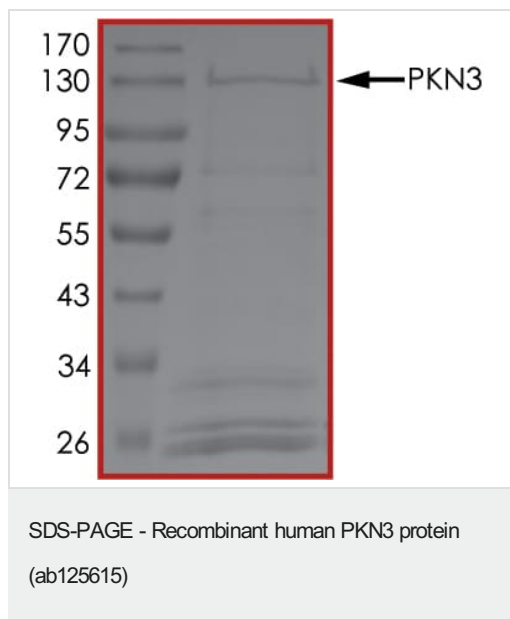
## 関連情報

機能	Contributes to invasiveness in malignant prostate cancer.
組織特異性	Expressed in prostate tumors and various cancer cell lines. Not expressed in adult tissues.
配列類似性	Belongs to the protein kinase superfamily. AGC Ser/Thr protein kinase family. PKC subfamily. Contains 1 AGC-kinase C-terminal domain. Contains 1 protein kinase domain. Contains 3 REM (Hr1) repeats.
ドメイン	The C1 domain does not bind the diacylglycerol (DAG).
翻訳後修飾	Autophosphorylated.
細胞内局在	Nucleus. Cytoplasm > perinuclear region. Nuclear and perinuclear Golgi region.

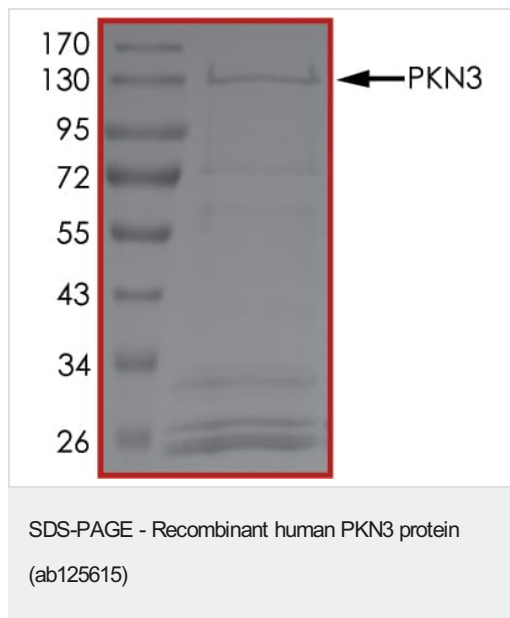
## 画像



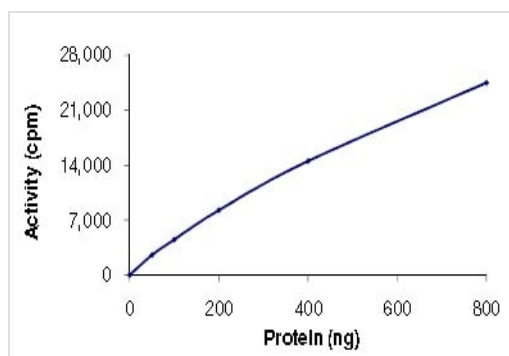
The specific activity of PKN3 (ab125615) was determined to be 3.5 nmol/min/mg as per activity assay protocol



SDS PAGE analysis of ab125615

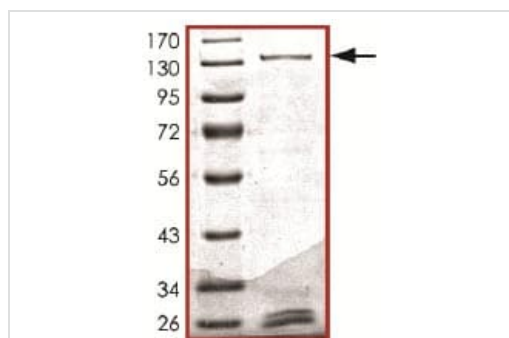


SDS PAGE analysis of ab125615



Sample Kinase Assay showing the specific activity of ab125615 as 3 nmol/mg/min.

Functional Studies - Recombinant human PKN3 protein (ab125615)



SDS-PAGE analysis of ab125615.

SDS-PAGE - Recombinant human PKN3 protein (ab125615)

**Please note:** All products are "FOR RESEARCH USE ONLY. NOT FOR USE IN DIAGNOSTIC PROCEDURES"

### Our Abpromise to you: Quality guaranteed and expert technical support

- Replacement or refund for products not performing as stated on the datasheet
- Valid for 12 months from date of delivery
- Response to your inquiry within 24 hours
- We provide support in Chinese, English, French, German, Japanese and Spanish
- Extensive multi-media technical resources to help you
- We investigate all quality concerns to ensure our products perform to the highest standards

If the product does not perform as described on this datasheet, we will offer a refund or replacement. For full details of the Abpromise, please visit <https://www.abcam.co.jp/abpromise> or contact our technical team.

### Terms and conditions

- Guarantee only valid for products bought direct from Abcam or one of our authorized distributors