

Product datasheet

Recombinant human PKN2 protein ab89860

画像数 5

製品の詳細

製品名	Recombinant human PKN2 protein
生理活性	The specific activity of ab89860 was determined to be 74 nmol/min/mg
精製度	> 75 % Densitometry. Affinity purified.
発現系	Baculovirus infected Sf9 cells
タンパク質長	Full length protein
Animal free	No
由来	Recombinant
生物種	Human

特性

Our **Abpromise guarantee** covers the use of **ab89860** in the following tested applications.

The application notes include recommended starting dilutions; optimal dilutions/concentrations should be determined by the end user.

アプリケーション	SDS-PAGE Western blot Functional Studies
製品の状態	Liquid
備考	ab204856 (CREB peptide) can be utilized as a substrate for assessing kinase activity

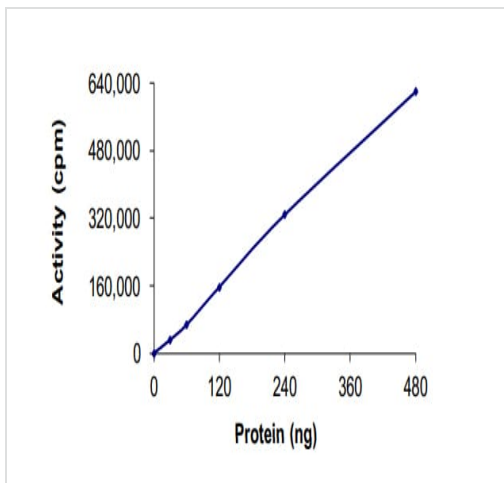
前処理および保存

保存方法および安定性	Shipped on dry ice. Upon delivery aliquot and store at -80°C. Avoid freeze / thaw cycles. pH: 7.50 Constituents: 0.0038% EGTA, 0.00174% PMSF, 0.00385% DTT, 0.79% Tris HCl, 0.00292% EDTA, 25% Glycerol (glycerin, glycerine), 0.87% Sodium chloride This product is an active protein and may elicit a biological response in vivo, handle with caution.
------------	--

関連情報

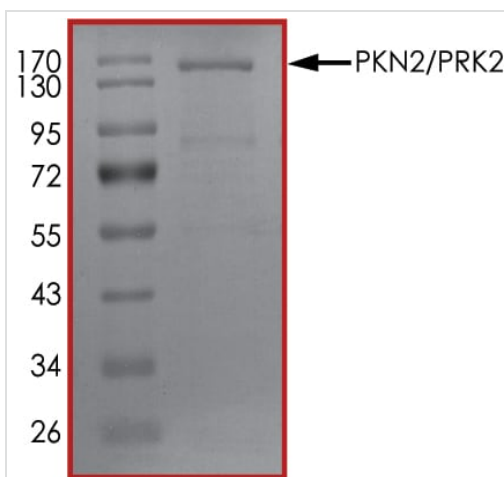
機能	Exhibits a preference for highly basic protein substrates.
配列類似性	Belongs to the protein kinase superfamily. AGC Ser/Thr protein kinase family. PKC subfamily. Contains 1 AGC-kinase C-terminal domain. Contains 1 C2 domain. Contains 1 protein kinase domain. Contains 3 REM (Hr1) repeats.
ドメイン	The C1 domain does not bind the diacylglycerol (DAG).
翻訳後修飾	Autophosphorylated. Activated by limited proteolysis with trypsin.
細胞内局在	Cytoplasm.

画像



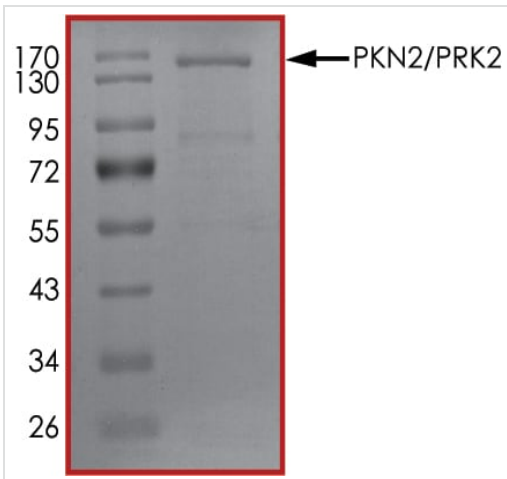
The specific activity of PKN2 (ab89860) was determined to be 78 nmol/min/mg as per activity assay protocol

Functional Studies - Recombinant human PKN2 protein (ab89860)



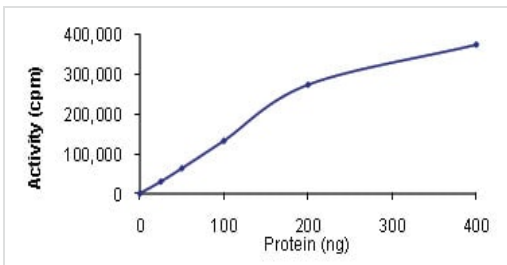
SDS PAGE analysis of ab89860

SDS-PAGE - Recombinant human PKN2 protein (ab89860)



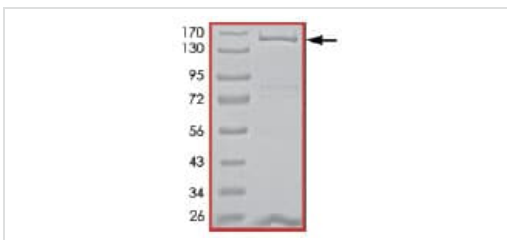
SDS PAGE analysis of ab89860

SDS-PAGE - Recombinant human PKN2 protein (ab89860)



Kinase Assay demonstrating specific activity of ab89860

Functional Studies - Recombinant human PKN2 protein (ab89860)



SDS-PAGE showing ab89860 at approximately 145kDa

SDS-PAGE - Recombinant human PKN2 protein (ab89860)

Please note: All products are "FOR RESEARCH USE ONLY. NOT FOR USE IN DIAGNOSTIC PROCEDURES"

Our Abpromise to you: Quality guaranteed and expert technical support

- Replacement or refund for products not performing as stated on the datasheet
- Valid for 12 months from date of delivery
- Response to your inquiry within 24 hours
- We provide support in Chinese, English, French, German, Japanese and Spanish

- Extensive multi-media technical resources to help you
- We investigate all quality concerns to ensure our products perform to the highest standards

If the product does not perform as described on this datasheet, we will offer a refund or replacement. For full details of the Abpromise, please visit <https://www.abcam.co.jp/abpromise> or contact our technical team.

Terms and conditions

- Guarantee only valid for products bought direct from Abcam or one of our authorized distributors