

Recombinant human PKC zeta protein ab60848

画像数 6

製品の詳細

製品名	Recombinant human PKC zeta protein
精製度	> 90 % SDS-PAGE. Purity: >90% as determined by densitometry. Affinity purified.
発現系	Baculovirus infected Sf9 cells
タンパク質長	Full length protein
Animal free	No
由来	Recombinant
生物種	Human
タグ	GST tag N-Terminus

特性

Our **Abpromise guarantee** covers the use of **ab60848** in the following tested applications.

The application notes include recommended starting dilutions; optimal dilutions/concentrations should be determined by the end user.

アプリケーション	Functional Studies SDS-PAGE Western blot
製品の状態	Liquid
備考	ab204856 (CREB peptide) can be utilized as a substrate for assessing kinase activity

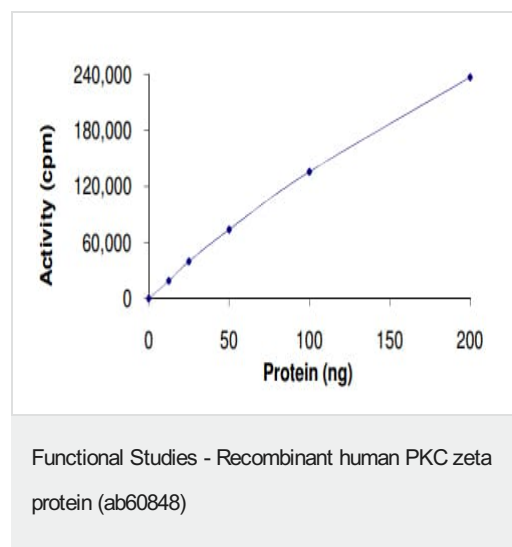
前処理および保存

保存方法および安定性	Shipped on dry ice. Upon delivery aliquot and store at -80°C. Avoid freeze / thaw cycles. pH: 7.50 Constituents: 0.0038% EGTA, 0.00174% PMSF, 0.00385% DTT, 0.79% Tris HCl, 0.00292% EDTA, 25% Glycerol (glycerin, glycerine), 0.87% Sodium chloride This product is an active protein and may elicit a biological response in vivo, handle with caution.
------------	--

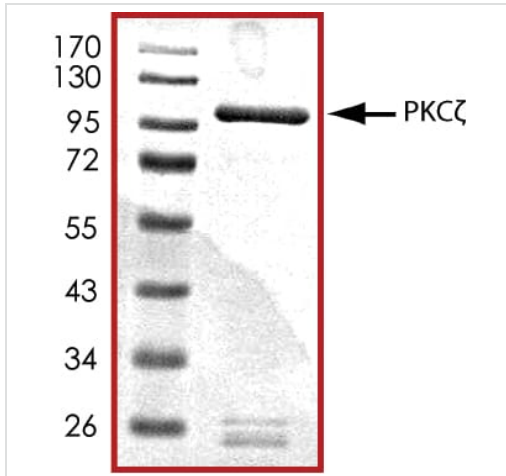
関連情報

機能	<p>This is a calcium-independent, phospholipid-dependent, serine- and threonine-specific enzyme. Phosphorylates 'Ser-311' of RELA subunit of NF-kappa-B.</p> <p>PKC is activated by diacylglycerol which in turn phosphorylates a range of cellular proteins. PKC also serves as the receptor for phorbol esters, a class of tumor promoters. Subunit of a quaternary complex that plays a central role in epithelial cell polarization.</p>
組織特異性	Expressed in brain, and to a lesser extent in lung, kidney and testis.
配列類似性	<p>Belongs to the protein kinase superfamily. AGC Ser/Thr protein kinase family. PKC subfamily.</p> <p>Contains 1 AGC-kinase C-terminal domain.</p> <p>Contains 1 OPR domain.</p> <p>Contains 1 phorbol-ester/DAG-type zinc finger.</p> <p>Contains 1 protein kinase domain.</p>
ドメイン	<p>The OPR domain mediates mutually exclusive interactions with SQSTM1 and PARD6B.</p> <p>The C1 domain does not bind the diacylglycerol (DAG).</p>
翻訳後修飾	CDH5 is required for its phosphorylation at Thr-410.
細胞内局在	Cytoplasm. Endosome. Cell junction. In the retina, localizes in the terminals of the rod bipolar cells (By similarity). Associates with endosomes. Presence of KRIT1, CDH5 and RAP1B is required for its localization to the cell junction.

画像

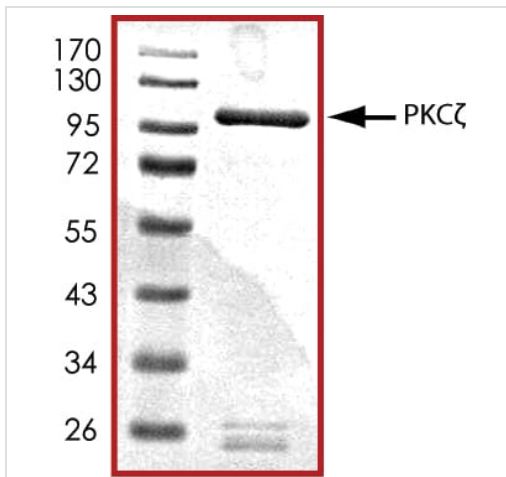


The specific activity of PKC zeta (ab60848) was determined to be 103 nmol/min/mg as per activity assay protocol



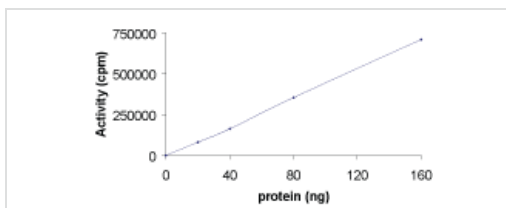
SDS PAGE analysis of ab60848

SDS-PAGE - Recombinant human PKC zeta protein
(ab60848)



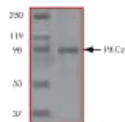
SDS PAGE analysis of ab60848

SDS-PAGE - Recombinant human PKC zeta protein
(ab60848)



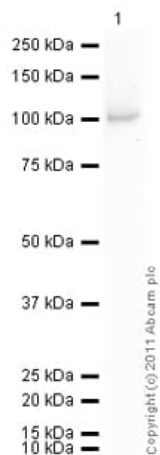
Sample Kinase Activity Plot.

Functional Studies - Recombinant human PKC zeta
protein (ab60848)



ab60848 on SDS-PAGE, MW ~93 kDa.

SDS-PAGE - Recombinant human PKC zeta protein
(ab60848)



Western blot - Recombinant human PKC zeta
protein (ab60848)

Please note: All products are "FOR RESEARCH USE ONLY. NOT FOR USE IN DIAGNOSTIC PROCEDURES"

Our Abpromise to you: Quality guaranteed and expert technical support

- Replacement or refund for products not performing as stated on the datasheet
- Valid for 12 months from date of delivery
- Response to your inquiry within 24 hours
- We provide support in Chinese, English, French, German, Japanese and Spanish
- Extensive multi-media technical resources to help you
- We investigate all quality concerns to ensure our products perform to the highest standards

If the product does not perform as described on this datasheet, we will offer a refund or replacement. For full details of the Abpromise, please visit <https://www.abcam.co.jp/abpromise> or contact our technical team.

Terms and conditions

- Guarantee only valid for products bought direct from Abcam or one of our authorized distributors