

### Recombinant human PKC theta/PRKCQ protein ab56641

画像数 5

#### 製品の詳細

製品名	Recombinant human PKC theta/PRKCQ protein
生理活性	Specific activity: 792 nmol/min/mg
精製度	> 75 % Densitometry. Affinity purified.
発現系	Baculovirus infected Sf9 cells
タンパク質長	Full length protein
Animal free	No
由来	Recombinant
生物種	Human
予測される分子量	110 kDa
タグ	GST tag N-Terminus

#### 特性

Our **Abpromise guarantee** covers the use of **ab56641** in the following tested applications.

The application notes include recommended starting dilutions; optimal dilutions/concentrations should be determined by the end user.

アプリケーション	Functional Studies SDS-PAGE
製品の状態	Liquid
備考	<b>ab204875</b> (PKC epsilon peptide) can be utilized as a substrate for assessing kinase activity This product was previously labelled as PKC theta

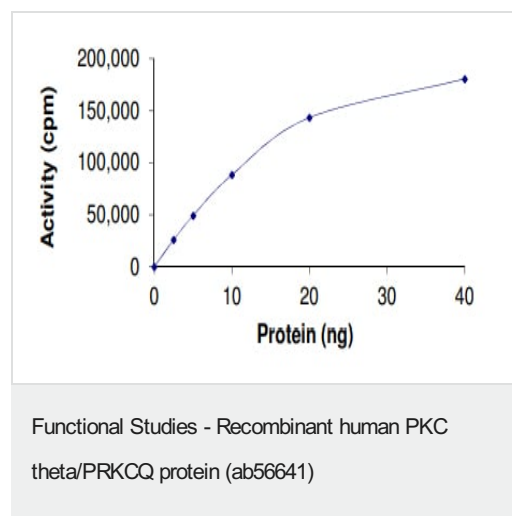
#### 前処理および保存

保存方法および安定性	Shipped on dry ice. Upon delivery aliquot and store at -80°C. Avoid freeze / thaw cycles. pH: 7.50 Constituents: 0.0038% EGTA, 0.00174% PMSF, 0.00385% DTT, 0.79% Tris HCl, 0.00292% EDTA, 25% Glycerol (glycerin, glycerine), 0.87% Sodium chloride This product is an active protein and may elicit a biological response in vivo, handle with caution.
------------	--

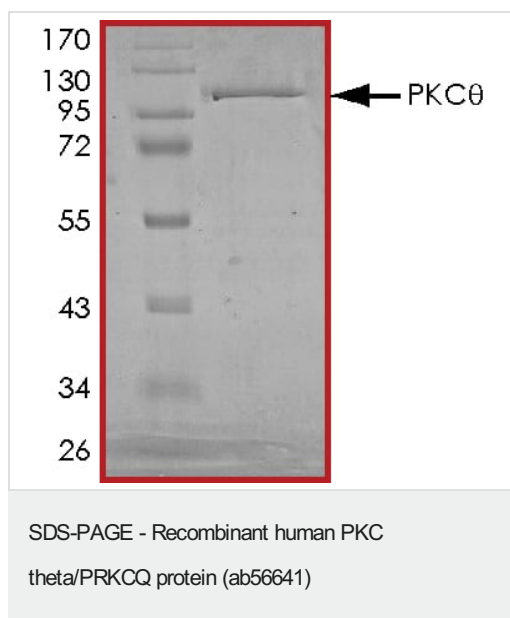
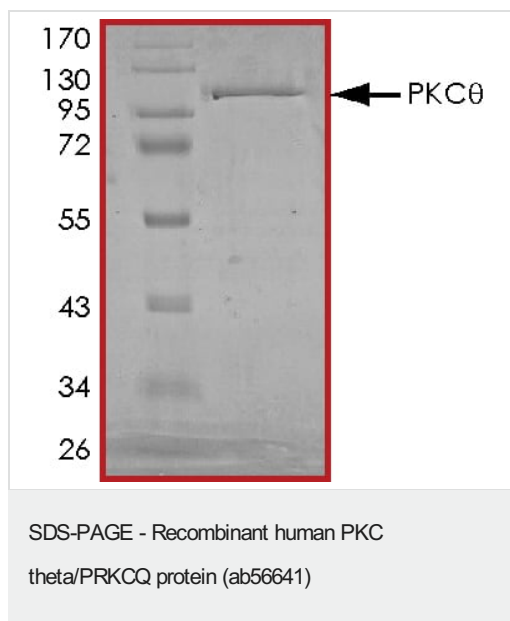
## 関連情報

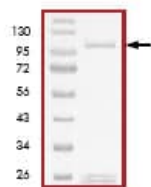
機能	<p>This is a calcium-independent, phospholipid-dependent, serine- and threonine-specific enzyme. Essential for T-cell receptor (TCR)-mediated T-cell activation, but is dispensable during TCR-dependent thymocyte development. Links the TCR signaling complex to the activation of NF-kappa-B in mature T lymphocytes. Required for interleukin-2 (IL2) production.</p> <p>PKC is activated by diacylglycerol which in turn phosphorylates a range of cellular proteins. PKC also serves as the receptor for phorbol esters, a class of tumor promoters.</p>
組織特異性	Skeletal muscle, megakaryoblastic cells and platelets.
配列類似性	<p>Belongs to the protein kinase superfamily. AGC Ser/Thr protein kinase family. PKC subfamily. Contains 1 AGC-kinase C-terminal domain.</p> <p>Contains 1 C2 domain.</p> <p>Contains 2 phorbol-ester/DAG-type zinc fingers.</p> <p>Contains 1 protein kinase domain.</p>
ドメイン	The C1 domain, containing the phorbol ester/DAG-type region 1 (C1A) and 2 (C1B), is the diacylglycerol sensor and the C2 domain is a non-calcium binding domain.
翻訳後修飾	Autophosphorylation at Thr-219 is required for targeting to the TCR and cellular function of PKC upon antigen receptor ligation.

## 画像



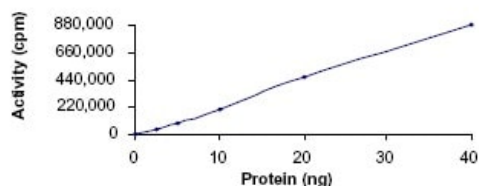
The specific activity of PKC theta/PRKCQ (ab56641) was determined to be 800 nmol/min/mg as per activity assay protocol





SDS Page analysis of ab56641

SDS-PAGE - Recombinant human PKC  
theta/PRKCQ protein (ab56641)



Specific kinase activity of ab56641

Functional Studies - Recombinant human PKC  
theta/PRKCQ protein (ab56641)

**Please note:** All products are "FOR RESEARCH USE ONLY. NOT FOR USE IN DIAGNOSTIC PROCEDURES"

### Our Abpromise to you: Quality guaranteed and expert technical support

- Replacement or refund for products not performing as stated on the datasheet
- Valid for 12 months from date of delivery
- Response to your inquiry within 24 hours
- We provide support in Chinese, English, French, German, Japanese and Spanish
- Extensive multi-media technical resources to help you
- We investigate all quality concerns to ensure our products perform to the highest standards

If the product does not perform as described on this datasheet, we will offer a refund or replacement. For full details of the Abpromise, please visit <https://www.abcam.co.jp/abpromise> or contact our technical team.

### Terms and conditions

- Guarantee only valid for products bought direct from Abcam or one of our authorized distributors