

Recombinant human PKC nu/PRKD3 protein ab60874

画像数 5

製品の詳細

製品名	Recombinant human PKC nu/PRKD3 protein
精製度	> 80 % Densitometry. Affinity purified.
発現系	Baculovirus infected Sf9 cells
タンパク質長	Full length protein
Animal free	No
由来	Recombinant
生物種	Human

特性

Our **Abpromise guarantee** covers the use of **ab60874** in the following tested applications.

The application notes include recommended starting dilutions; optimal dilutions/concentrations should be determined by the end user.

アプリケーション	SDS-PAGE Functional Studies
----------	--------------------------------

製品の状態 Liquid

備考 **ab204856** (CREB peptide) can be utilized as a substrate for assessing kinase activity.
This product was previously labelled as PKC nu.

前処理および保存

保存方法および安定性 Shipped on dry ice. Upon delivery aliquot and store at -80°C. Avoid freeze / thaw cycles.
pH: 7.50
Constituents: 0.0038% EGTA, 0.00174% PMSF, 0.00385% DTT, 0.79% Tris HCl, 0.00292% EDTA, 25% Glycerol (glycerin, glycerine), 0.87% Sodium chloride
This product is an active protein and may elicit a biological response in vivo, handle with caution.

関連情報

機能 Converts transient diacylglycerol (DAG) signals into prolonged physiological effects, downstream

of PKC. Involved in resistance to oxidative stress.

組織特異性

Ubiquitous.

配列類似性

Belongs to the protein kinase superfamily. CAMK Ser/Thr protein kinase family. PKD subfamily.

Contains 1 PH domain.

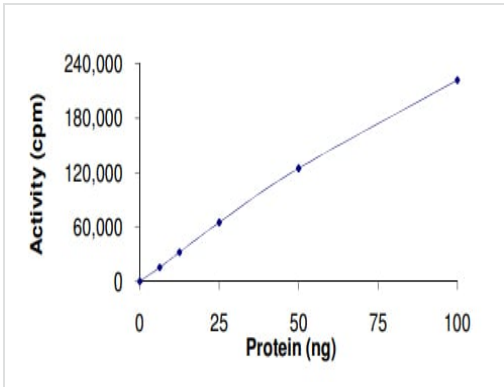
Contains 2 phorbol-ester/DAG-type zinc fingers.

Contains 1 protein kinase domain.

細胞内局在

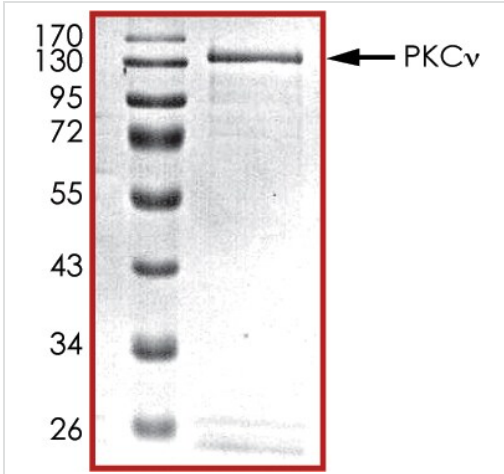
Cytoplasm. Membrane. Translocation to the cell membrane is required for kinase activation.

画像



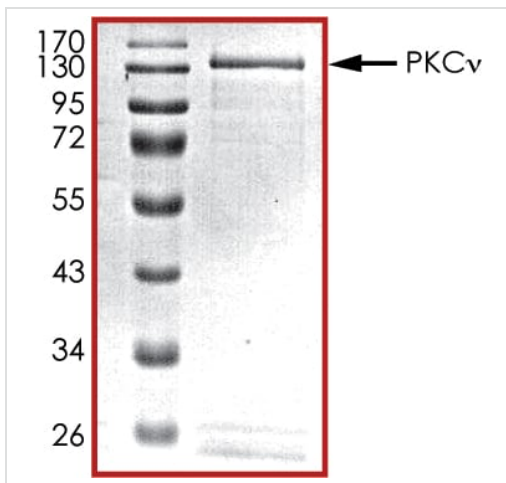
The specific activity of PKC nu/PRKD3 (ab60874) was determined to be 108 nmol/min/mg as per activity assay protocol

Functional Studies - Recombinant human PKC nu/PRKD3 protein (ab60874)



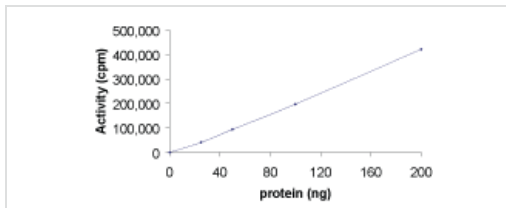
SDS PAGE analysis of ab60874

SDS-PAGE - Recombinant human PKC nu/PRKD3 protein (ab60874)



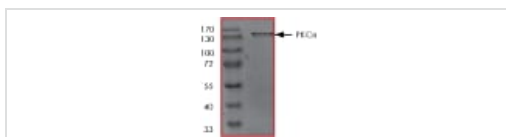
SDS PAGE analysis of ab60874

SDS-PAGE - Recombinant human PKC nu/PRKD3 protein (ab60874)



Sample Kinase Activity Plot.

Functional Studies - Recombinant human PKC nu/PRKD3 protein (ab60874)



ab60874 on SDS-PAGE, MW ~142 kDa.

SDS-PAGE - Recombinant human PKC nu/PRKD3 protein (ab60874)

Please note: All products are "FOR RESEARCH USE ONLY. NOT FOR USE IN DIAGNOSTIC PROCEDURES"

Our Abpromise to you: Quality guaranteed and expert technical support

- Replacement or refund for products not performing as stated on the datasheet
- Valid for 12 months from date of delivery
- Response to your inquiry within 24 hours

- We provide support in Chinese, English, French, German, Japanese and Spanish
- Extensive multi-media technical resources to help you
- We investigate all quality concerns to ensure our products perform to the highest standards

If the product does not perform as described on this datasheet, we will offer a refund or replacement. For full details of the Abpromise, please visit <https://www.abcam.co.jp/abpromise> or contact our technical team.

Terms and conditions

- Guarantee only valid for products bought direct from Abcam or one of our authorized distributors