

Recombinant human PKC eta protein ab60849

1 References [画像数 5](#)

製品の詳細

製品名	Recombinant human PKC eta protein
精製度	> 90 % Densitometry. Affinity purified.
発現系	Baculovirus infected Sf9 cells
タンパク質長	Full length protein
Animal free	No
由来	Recombinant
生物種	Human
タグ	GST tag N-Terminus

特性

Our **Abpromise guarantee** covers the use of **ab60849** in the following tested applications.

The application notes include recommended starting dilutions; optimal dilutions/concentrations should be determined by the end user.

アプリケーション	Functional Studies SDS-PAGE
製品の状態	Liquid
備考	ab204875 (PKC epsilon peptide) can be utilized as a substrate for assessing kinase activity

前処理および保存

保存方法および安定性	Shipped on dry ice. Upon delivery aliquot and store at -80°C. Avoid freeze / thaw cycles. pH: 7.50 Constituents: 0.0038% EGTA, 0.00174% PMSF, 0.00385% DTT, 0.79% Tris HCl, 0.00292% EDTA, 25% Glycerol (glycerin, glycerine), 0.87% Sodium chloride This product is an active protein and may elicit a biological response in vivo, handle with caution.
------------	--

関連情報

機能	This is calcium-independent, phospholipid-dependent, serine- and threonine-specific enzyme.
----	---

PKC is activated by diacylglycerol which in turn phosphorylates a range of cellular proteins. PKC also serves as the receptor for phorbol esters, a class of tumor promoters.

組織特異性

Most abundant in lung, less in heart and skin.

関連疾患

Defects in PRKCH may be a cause of susceptibility to ischemic stroke (ISCHSTR) [MIM:601367]; also known as cerebrovascular accident or cerebral infarction. A stroke is an acute neurologic event leading to death of neural tissue of the brain and resulting in loss of motor, sensory and/or cognitive function. Ischemic strokes, resulting from vascular occlusion, is considered to be a highly complex disease consisting of a group of heterogeneous disorders with multiple genetic and environmental risk factors.

配列類似性

Belongs to the protein kinase superfamily. AGC Ser/Thr protein kinase family. PKC subfamily.

Contains 1 AGC-kinase C-terminal domain.

Contains 1 C2 domain.

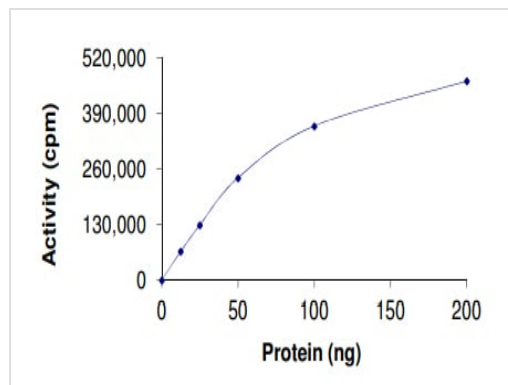
Contains 2 phorbol-ester/DAG-type zinc fingers.

Contains 1 protein kinase domain.

ドメイン

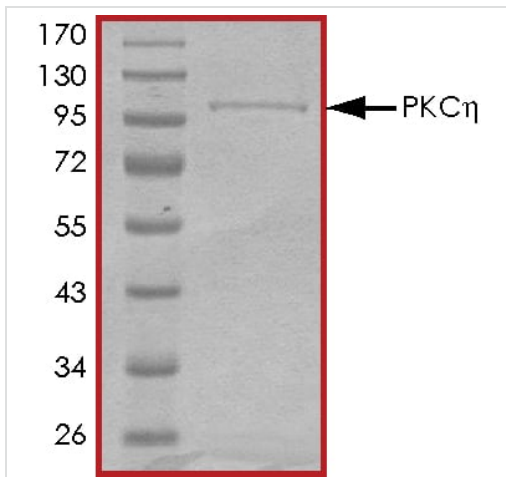
The C1 domain, containing the phorbol ester/DAG-type region 1 (C1A) and 2 (C1B), is the diacylglycerol sensor and the C2 domain is a non-calcium binding domain.

画像



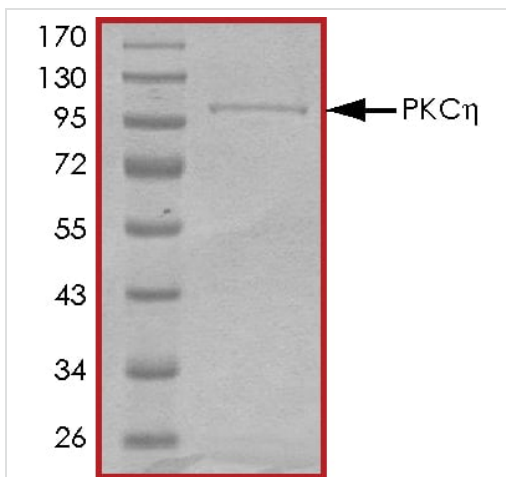
The specific activity of PKC eta (ab60849) was determined to be 99 nmol/min/mg as per activity assay protocol

Functional Studies - Recombinant human PKC eta protein (ab60849)



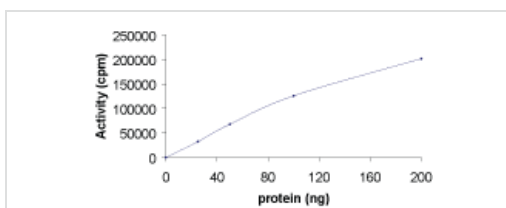
SDS PAGE analysis of ab60849

SDS-PAGE - Recombinant human PKC eta protein
(ab60849)



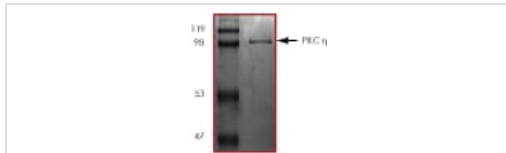
SDS PAGE analysis of ab60849

SDS-PAGE - Recombinant human PKC eta protein
(ab60849)



Sample Kinase Activity Plot.

Functional Studies - Recombinant human PKC eta
protein (ab60849)



ab60849 on SDS-PAGE, MW ~103 kDa.

SDS-PAGE - Recombinant human PKC eta protein
(ab60849)

Please note: All products are "FOR RESEARCH USE ONLY. NOT FOR USE IN DIAGNOSTIC PROCEDURES"

Our Abpromise to you: Quality guaranteed and expert technical support

- Replacement or refund for products not performing as stated on the datasheet
- Valid for 12 months from date of delivery
- Response to your inquiry within 24 hours
- We provide support in Chinese, English, French, German, Japanese and Spanish
- Extensive multi-media technical resources to help you
- We investigate all quality concerns to ensure our products perform to the highest standards

If the product does not perform as described on this datasheet, we will offer a refund or replacement. For full details of the Abpromise, please visit <https://www.abcam.co.jp/abpromise> or contact our technical team.

Terms and conditions

- Guarantee only valid for products bought direct from Abcam or one of our authorized distributors