

Recombinant human PKC beta 2 protein ab60841

2 References 画像数 5

製品の詳細

製品名	Recombinant human PKC beta 2 protein
生理活性	423 nmol/min/mg Specific activity defined by radiometric assay, nmol of gamma-phosphate from ATP transferred to PKCtide peptide substrate
精製度	> 70 % Affinity purified. Purified by affinity chromatography
発現系	Baculovirus infected Sf9 cells
アクセッション番号	<u>P05771-2</u>
タンパク質長	Full length protein
Animal free	No
由来	Recombinant
生物種	Human
配列	

MADPAAGPPP SEGEESTVRF ARKGALRQKN
VHEVKNHKFT ARFFKQPTFC SHCTDFIWGF
GKQGFQCQVC CFVVHKRCHE FVTFSCPGAD
KGPASDDPRS KHKFKIHTYS SPTFCDHCGS
LLYGLIHQGM KCDTCMMNVH KRCVMNVPSL
CGTDHTERRG RIYIQAHDNR DVLIVLVRDA
KNLVPMDPNG LSDPYVKLKL IPDPKSESKQ
KTKTIKCSLN PEWNETFRFQ LKESDKDRRL
SVEIWDWDLT SRNDFMGSL SFGISELQKAS
VDGWFKLLSQ EEGEYFNVPV PPEGSEANEE
LRQKFERAKI SQGTKVPEEK TTNTVSKFDN
NGNRDRMKLT DFNFLMVLGK GSFGKVMLSE
RKGTDELYAV KILKKDVVIQ DDDVECTMVE
KRVLALPGKP PFLTQLHSCF QTMDRLYFVM
EYVNGGDLMY HIQQVGRFKE PHAVFYAAEI
AIGLFFLQSK GIIYRDLKLD NVMLDSEGHI
KIADFGMCKE NIWDGVTTKT FCGTPDYIAP
EIIAYQPYGK SVDWWAFGVL LYEMLAGQAP
FEGEDELEF QSIMEHNVAY PKSMSKEAVA
ICKGLMTKHP GKRLGCGPEG ERDIKEHAFF
RYIDWEKLER KEIQPPYKPK ACGRNAENFD
RFFTRHPPVL TPPDQEVIRN IDQSEFEGFS
FVNSEFLKPE VKS

予測される分子量	105 kDa
領域	1 to 671
タグ	GST tag N-Terminus

特性

Our **Abpromise guarantee** covers the use of **ab60841** in the following tested applications.

The application notes include recommended starting dilutions; optimal dilutions/concentrations should be determined by the end user.

アプリケーション	Functional Studies
	SDS-PAGE

製品の状態	Liquid
-------	--------

備考	ab204856 (CREB peptide) can be utilized as a substrate for assessing kinase activity
----	---

前処理および保存

保存方法および安定性	Shipped on dry ice. Upon delivery aliquot and store at -80°C. Avoid freeze / thaw cycles. pH: 7.50 Constituents: 0.00174% PMSF, 0.00385% DTT, 0.79% Tris HCl, 0.00292% EDTA, 25% Glycerol (glycerin, glycerine), 0.87% Sodium chloride, 0.31% Glutathione This product is an active protein and may elicit a biological response in vivo, handle with caution.
------------	---

関連情報

機能	Calcium-activated and phospholipid-dependent serine/threonine-protein kinase involved in various processes such as regulation of the B-cell receptor (BCR) signalosome, apoptosis and transcription regulation. Plays a key role in B-cell activation and function by regulating BCR-induced NF-kappa-B activation and B-cell survival. Required for recruitment and activation of the IKK kinase to lipid rafts and mediates phosphorylation of CARD11/CARMA1 at 'Ser-559', 'Ser-644' and 'Ser-652', leading to activate the NF-kappa-B signaling. Involved in apoptosis following oxidative damage: in case of oxidative conditions, specifically phosphorylates 'Ser-36' of isoform p66Shc of SHC1, leading to mitochondrial accumulation of p66Shc, where p66Shc acts as a reactive oxygen species producer. Acts as a coactivator of androgen receptor (ANDR)-dependent transcription, by being recruited to ANDR target genes and specifically mediating phosphorylation of 'Thr-6' of histone H3 (H3T6ph), a specific tag for epigenetic transcriptional activation that prevents demethylation of histone H3 'Lys-4' (H3K4me) by LSD1/KDM1A. Also involved in triglyceride homeostasis. Serves as the receptor for phorbol esters, a class of tumor promoters.
----	--

配列類似性	Belongs to the protein kinase superfamily. AGC Ser/Thr protein kinase family. PKC subfamily. Contains 1 AGC-kinase C-terminal domain. Contains 1 C2 domain. Contains 2 phorbol-ester/DAG-type zinc fingers. Contains 1 protein kinase domain.
-------	--

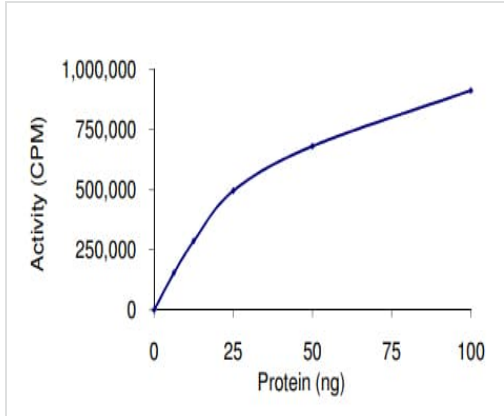
翻訳後修飾	Phosphorylation on Thr-500 within the activation loop renders it competent to autophosphorylate. Subsequent autophosphorylation of Thr-642 maintains catalytic competence, and autophosphorylation on Ser-661 appears to release the kinase into the cytosol.
-------	---

Autophosphorylation on other sites i.e. in the N-terminal and hinge regions have no effect on enzyme activity.

細胞内局在

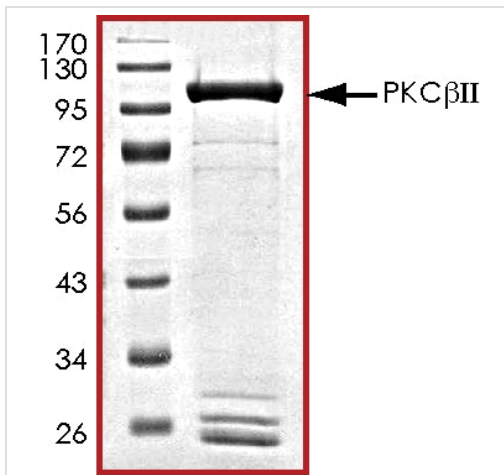
Cytoplasm. Nucleus. Membrane.

画像



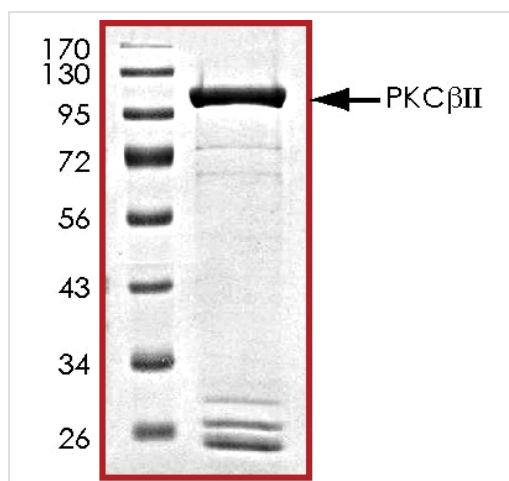
The specific activity of PKC beta 2 (ab60841) was determined to be 423 nmol/min/mg as per activity assay protocol

Functional Studies - Recombinant human PKC beta 2 protein (ab60841)



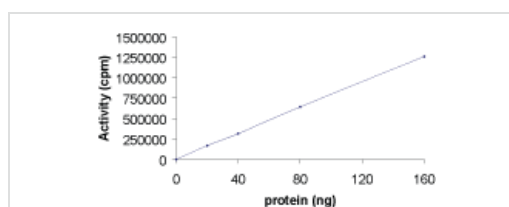
SDS PAGE analysis of ab60841

SDS-PAGE - Recombinant human PKC beta 2 protein (ab60841)



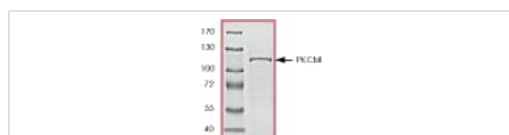
SDS PAGE analysis of ab60841

SDS-PAGE - Recombinant human PKC beta 2 protein (ab60841)



Sample Kinase Activity Plot.

Functional Studies - Recombinant human PKC beta 2 protein (ab60841)



ab60841 on SDS-PAGE, MW ~105 kDa.

SDS-PAGE - Recombinant human PKC beta 2 protein (ab60841)

Please note: All products are "FOR RESEARCH USE ONLY. NOT FOR USE IN DIAGNOSTIC PROCEDURES"

Our Abpromise to you: Quality guaranteed and expert technical support

- Replacement or refund for products not performing as stated on the datasheet
- Valid for 12 months from date of delivery
- Response to your inquiry within 24 hours
- We provide support in Chinese, English, French, German, Japanese and Spanish
- Extensive multi-media technical resources to help you
- We investigate all quality concerns to ensure our products perform to the highest standards

If the product does not perform as described on this datasheet, we will offer a refund or replacement. For full details of the Abpromise, please visit <https://www.abcam.co.jp/abpromise> or contact our technical team.

Terms and conditions

- Guarantee only valid for products bought direct from Abcam or one of our authorized distributors