

# Recombinant human PKA beta (catalytic subunit) protein ab60837

画像数 6

### 製品の詳細

製品名	Recombinant human PKA beta (catalytic subunit) protein
精製度	> 90 % SDS-PAGE. Purity: >90% as determined by densitometry. Affinity purified.
発現系	Baculovirus infected Sf9 cells
タンパク質長	Full length protein
Animal free	No
由来	Recombinant
生物種	Human
予測される分子量	65 kDa including tags
タグ	GST tag N-Terminus

### 特性

Our **Abpromise guarantee** covers the use of **ab60837** in the following tested applications.

The application notes include recommended starting dilutions; optimal dilutions/concentrations should be determined by the end user.

アプリケーション	Functional Studies SDS-PAGE Western blot
製品の状態	Liquid
備考	<b>ab204856</b> (CREB peptide) can be utilized as a substrate for assessing kinase activity

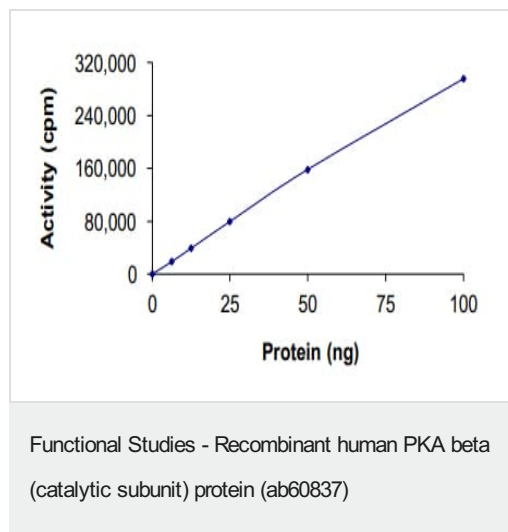
### 前処理および保存

保存方法および安定性	Shipped on dry ice. Upon delivery aliquot and store at -80°C. Avoid freeze / thaw cycles. pH: 7.50 Constituents: 0.0038% EGTA, 0.00174% PMSF, 0.00385% DTT, 0.79% Tris HCl, 0.00292% EDTA, 25% Glycerol (glycerin, glycerine), 0.87% Sodium chloride This product is an active protein and may elicit a biological response in vivo, handle with caution.
------------	--

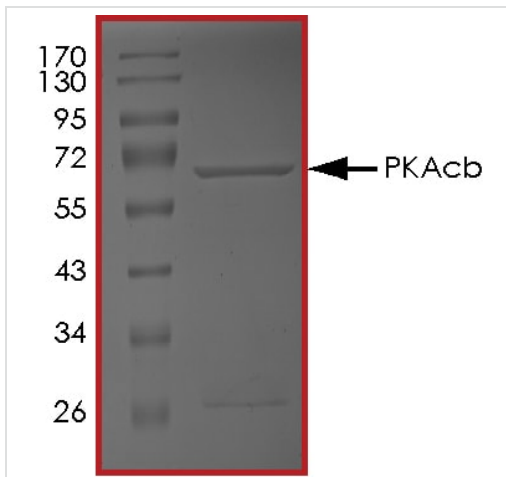
## 関連情報

機能	Mediates cAMP-dependent signaling triggered by receptor binding to GPCRs. PKA activation regulates diverse cellular processes such as cell proliferation, the cell cycle, differentiation and regulation of microtubule dynamics, chromatin condensation and decondensation, nuclear envelope disassembly and reassembly, as well as regulation of intracellular transport mechanisms and ion flux.
組織特異性	Isoform 1 is most abundant in the brain, with low level expression in kidney. Isoform 2 is predominantly expressed in thymus, spleen and kidney. Isoform 3 and isoform 4 are only expressed in the brain.
配列類似性	Belongs to the protein kinase superfamily. AGC Ser/Thr protein kinase family. cAMP subfamily. Contains 1 AGC-kinase C-terminal domain. Contains 1 protein kinase domain.
翻訳後修飾	Asn-3 is partially deaminated to Asp giving rise to 2 major isoelectric variants, called CB and CA respectively.
細胞内局在	Cytoplasm. Nucleus. Translocates into the nucleus (monomeric catalytic subunit) (By similarity). The inactive holoenzyme is found in the cytoplasm.

## 画像

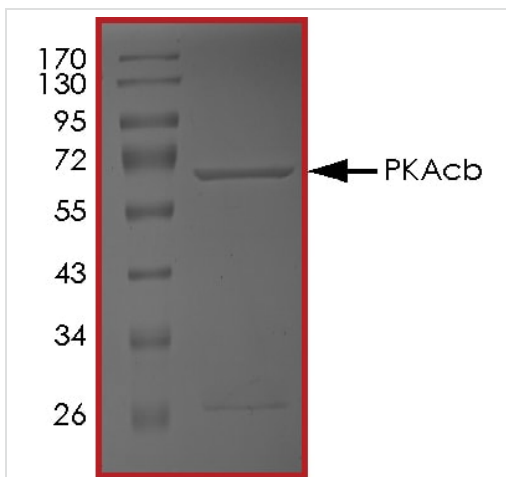


The specific activity of PKA beta (catalytic subunit) (ab60837) was determined to be 430 nmol/min/mg as per activity assay protocol



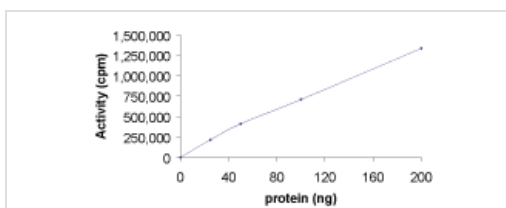
SDS PAGE analysis of ab60837

SDS-PAGE - Recombinant human PKA beta  
(catalytic subunit) protein (ab60837)



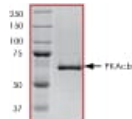
SDS PAGE analysis of ab60837

SDS-PAGE - Recombinant human PKA beta  
(catalytic subunit) protein (ab60837)



Sample Kinase Activity Plot.

Functional Studies - Recombinant human PKA beta  
(catalytic subunit) protein (ab60837)



ab60837 on SDS-PAGE, MW ~65 kDa.

SDS-PAGE - Recombinant human PKA beta  
(catalytic subunit) protein (ab60837)



Western blot - Recombinant human PKA beta  
(catalytic subunit) protein (ab60837)

**Please note:** All products are "FOR RESEARCH USE ONLY. NOT FOR USE IN DIAGNOSTIC PROCEDURES"

### Our Abpromise to you: Quality guaranteed and expert technical support

- Replacement or refund for products not performing as stated on the datasheet
- Valid for 12 months from date of delivery
- Response to your inquiry within 24 hours
- We provide support in Chinese, English, French, German, Japanese and Spanish
- Extensive multi-media technical resources to help you
- We investigate all quality concerns to ensure our products perform to the highest standards

If the product does not perform as described on this datasheet, we will offer a refund or replacement. For full details of the Abpromise, please visit <https://www.abcam.co.jp/abpromise> or contact our technical team.

### Terms and conditions

- Guarantee only valid for products bought direct from Abcam or one of our authorized distributors