

Recombinant Human PITX1/BFT protein ab114744

画像数 1

製品の詳細

| | |
|-------------|--|
| 製品名 | Recombinant Human PITX1/BFT protein |
| 発現系 | Wheat germ |
| アクセッション番号 | <u>P78337</u> |
| タンパク質長 | Full length protein |
| Animal free | No |
| 由来 | Recombinant |
| 生物種 | Human |
| 配列 | MDAFKGGMSLERLPEGLRPPPPPHDMGPAFHLARPADPREP LENSASES SDTELPEKERGGEPKGPEDSGAGGTGCGGADDPAKKKKQRRQ RTHFTSQQ LQELEATFQRNRYPDMSMREEIAVWTNLTEPRVRVWFKNRRRA KWRKRERN QQLDLCKGGYVPQFSGLVQPYEDVYAAGYSYNNWAAKSLAPA PLSTKSFT FFNSMSPLSSQSMFSAPSSISSMTMPSSMGPVAVPGMPNSGL NNINNLTG SSLNSAMSPGACPYGTPASPYSVYRDTCNSSLASLRLKSKQH SSFYGYGAL QGPASGLNACQYNS |
| 予測される分子量 | 61 kDa including tags |
| 領域 | 1 to 314 |

特性

Our **Abpromise guarantee** covers the use of **ab114744** in the following tested applications.

The application notes include recommended starting dilutions; optimal dilutions/concentrations should be determined by the end user.

| | |
|----------|--|
| アプリケーション | ELISA Western blot SDS-PAGE |
| 製品の状態 | Liquid |
| 備考 | This product was previously labelled as PITX1. |

前処理および保存

保存方法および安定性

Shipped on dry ice. Upon delivery aliquot and store at -80°C. Avoid freeze / thaw cycles.

pH: 8.00

Constituents: 0.3% Glutathione, 0.79% Tris HCl

関連情報

機能

May play a role in the development of anterior structures, and in particular, the brain and facies and in specifying the identity or structure of hindlimb.

関連疾患

Defects in PITX1 are a cause of congenital clubfoot (CCF) [MIM:119800]; also known as talipes equinovarus (TEV). Clubfoot is a congenital limb deformity defined as fixation of the foot in cavus, adductus, varus, and equinus (i.e. inclined inwards, axially rotated outwards, and pointing downwards) with concomitant soft tissue abnormalities. Clubfoot may occur in isolation or as part of a syndrome. Clubfoot appears to be a multifactorial trait.

配列類似性

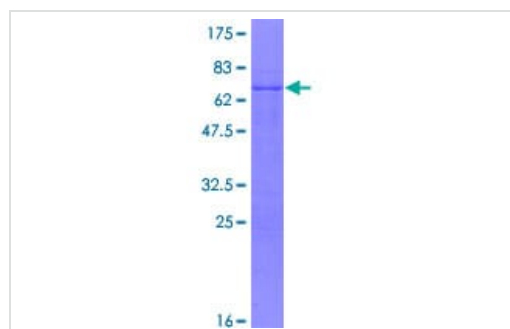
Belongs to the paired homeobox family. Bicoid subfamily.

Contains 1 homeobox DNA-binding domain.

細胞内局在

Nucleus.

画像



12.5% SDS-PAGE showing ab114744 at approximately 60.61kDa.

Stained with Coomassie Blue.

SDS-PAGE - Recombinant Human PITX1/BFT protein (ab114744)

Please note: All products are "FOR RESEARCH USE ONLY. NOT FOR USE IN DIAGNOSTIC PROCEDURES"

Our Abpromise to you: Quality guaranteed and expert technical support

- Replacement or refund for products not performing as stated on the datasheet
- Valid for 12 months from date of delivery
- Response to your inquiry within 24 hours
- We provide support in Chinese, English, French, German, Japanese and Spanish

- Extensive multi-media technical resources to help you
- We investigate all quality concerns to ensure our products perform to the highest standards

If the product does not perform as described on this datasheet, we will offer a refund or replacement. For full details of the Abpromise, please visit <https://www.abcam.co.jp/abpromise> or contact our technical team.

Terms and conditions

- Guarantee only valid for products bought direct from Abcam or one of our authorized distributors