

Recombinant Human PIST protein ab93743

画像数 1

製品の詳細

製品名	Recombinant Human PIST protein
精製度	> 90 % SDS-PAGE. ab93743 was purified using conventional chromatography techniques.
発現系	Escherichia coli
タンパク質長	Protein fragment
Animal free	No
由来	Recombinant
生物種	Human
配列	MGSSHHHHHH SSGLVPRGSH MIRKVLLLKE DHEGLGISIT GGKEHGVPII ISEIHPGQPA DRCGGLHVGD AILAVNGVNL RDTKHKEAVT ILSQQRGEIE FEVVYVAPEV DSDDENVEYE DESGHRYRLY LDELEGGGNP GASCKDTSGE IKVLQGFNKK AVTDTHENGD LGTASETPLD DGASKLDDLH TLYHKKSY
領域	278 to 454

特性

Our **Abpromise guarantee** covers the use of **ab93743** in the following tested applications.

The application notes include recommended starting dilutions; optimal dilutions/concentrations should be determined by the end user.

アプリケーション	SDS-PAGE
製品の状態	Liquid

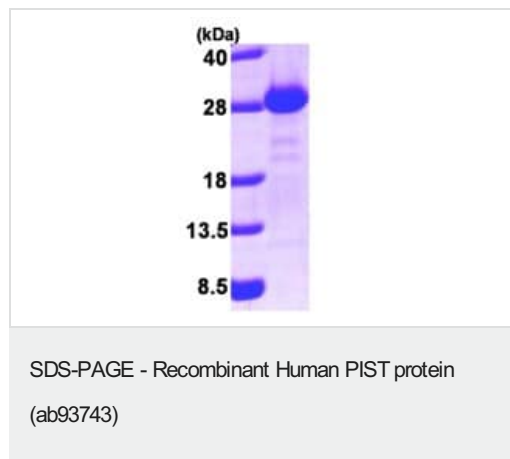
前処理および保存

保存方法および安定性	Shipped at 4°C. Upon delivery aliquot and store at -20°C or -80°C. Avoid repeated freeze / thaw cycles. pH: 8.00 Constituents: 0.0154% DTT, 0.316% Tris HCl, 10% Glycerol (glycerin, glycerine)
------------	---

関連情報

機能	Plays a role in intracellular protein trafficking and degradation. May regulate CFTR chloride currents and acid-induced ACCN3 currents by modulating cell surface expression of both channels. May also regulate the intracellular trafficking of the ADR1B receptor. May play a role in autophagy. Overexpression results in CFTR intracellular retention and degradation in the lysosomes.
組織特異性	Ubiquitously expressed.
関連疾患	Note=A chromosomal aberration involving GOPC is found in a glioblastoma multiforme sample. An intra-chromosomal deletion del(6)(q21q21) is responsible for the formation of GOPC-ROS1 chimeric protein which has a constitutive receptor tyrosine kinase activity.
配列類似性	Contains 1 PDZ (DHR) domain.
ドメイン	<p>The PDZ domain mediates interactions with FZD5, FZD8, ACCN3, GRID2, CLCN3 (By similarity). Mediates also interaction with CFTR and ADRB1.</p> <p>The coiled-coil region probably mediates association to membranes, targeting to the Golgi, and interactions with GOLGA3, and STX6. May also mediate interaction with RHOQ.</p>
細胞内局在	Cytoplasm. Golgi apparatus membrane. Golgi apparatus > trans-Golgi network membrane. Cell junction > synapse. Cell junction > synapse > postsynaptic cell membrane > postsynaptic density. Cell projection > dendrite. Enriched in synaptosomal and postsynaptic densities (PSD) fractions (By similarity). Expressed in cell bodies and dendrites of Purkinje cells (By similarity). Localized at the trans-Golgi network (TGN) of spermatids and the medulla of round spermatides.

画像



15% SDS-PAGE showing ab93743 (3ug)

Please note: All products are "FOR RESEARCH USE ONLY. NOT FOR USE IN DIAGNOSTIC PROCEDURES"

Our Promise to you: Quality guaranteed and expert technical support

- Replacement or refund for products not performing as stated on the datasheet
- Valid for 12 months from date of delivery
- Response to your inquiry within 24 hours
- We provide support in Chinese, English, French, German, Japanese and Spanish
- Extensive multi-media technical resources to help you

- We investigate all quality concerns to ensure our products perform to the highest standards

If the product does not perform as described on this datasheet, we will offer a refund or replacement. For full details of the Abpromise, please visit <https://www.abcam.co.jp/abpromise> or contact our technical team.

Terms and conditions

- Guarantee only valid for products bought direct from Abcam or one of our authorized distributors