

### Recombinant Human PINK1 protein (denatured) ab116177

画像数 1

#### 製品の詳細

製品名	Recombinant Human PINK1 protein (denatured)		
精製度	> 90 % SDS-PAGE. ab116177 was purified using conventional chromatography.		
発現系	Escherichia coli		
アクセッション番号	<b><u>Q9BXM7</u></b>		
タンパク質長	Protein fragment		
Animal free	No		
由来	Recombinant		
生物種	Human		
配列	MYLIGQSIGK GCSAAVYEAT MPTLPQNLEV TKSTGLLPGR GPGTSAPGEG QERAPGAPAF PLAIKMMWNI SAGSSSEAIL NTMSQELVPA SRVALAGEYG AVTYRKSCKRG PKQLAPHPNI IRVLRAFTSS VPLLPGALVD YPDVLP SRLH PEGLGHGRTL FLVMKNYPCT LRQYLCVNTP SPRLAAMMLL QLLEGVDHLV QQGIAHRDLK SDNILVELDP DGCPWLVIAD FGCLADESI GLQLPFSSWY VDRGGNGCLM APEVSTARPG PRAVIDYSKA DAWAVGAIA Y EIFGLVNP FY GQGKAHLESR SYQEAQLPAL PESVPPDV RQ LVRALLQREA SKRPSARVAA NVL		
予測される分子量	38 kDa		
領域	156 to 507		

#### 特性

Our **Abpromise guarantee** covers the use of **ab116177** in the following tested applications.

The application notes include recommended starting dilutions; optimal dilutions/concentrations should be determined by the end user.

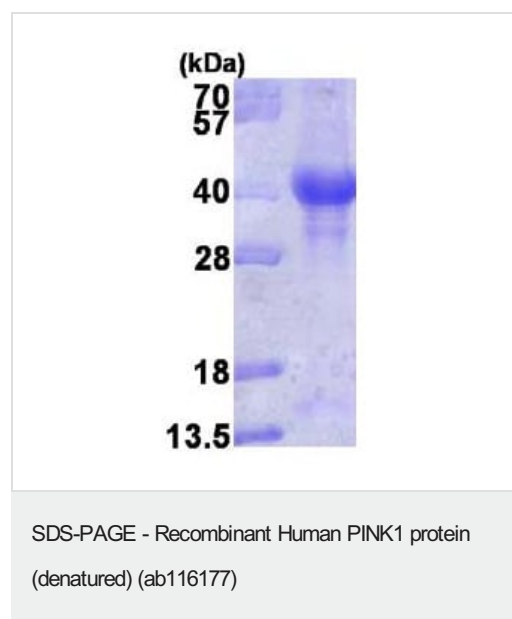
アプリケーション SDS-PAGE

製品の状態 Liquid

前処理および保存

<b>保存方法および安定性</b>	<p>Shipped at 4°C. Store at +4°C short term (1-2 weeks). Upon delivery aliquot. Store at -20°C or -80°C. Avoid freeze / thaw cycle.</p> <p>pH: 8.00</p> <p>Constituents: 6.01% Urea, 0.32% Tris HCl, 5% Glycerol (glycerin, glycerine)</p>
<b>関連情報</b>	
<b>機能</b>	<p>Protects against mitochondrial dysfunction during cellular stress, potentially by phosphorylating mitochondrial proteins. Involved in the clearance of damaged mitochondria via selective autophagy (mitophagy). It is necessary for PARK2 recruitment to dysfunctional mitochondria to initiate their degradation.</p>
<b>組織特異性</b>	<p>Highly expressed in heart, skeletal muscle and testis, and at lower levels in brain, placenta, liver, kidney, pancreas, prostate, ovary and small intestine. Present in the embryonic testis from an early stage of development.</p>
<b>関連疾患</b>	<p>Defects in PINK1 are the cause of Parkinson disease type 6 (PARK6) [MIM:605909]. A neurodegenerative disorder characterized by parkinsonian signs such as rigidity, resting tremor and bradykinesia. A subset of patients manifest additional symptoms including hyperreflexia, autonomic instability, dementia and psychiatric disturbances. Symptoms show diurnal fluctuation and can improve after sleep.</p>
<b>配列類似性</b>	<p>Belongs to the protein kinase superfamily. Ser/Thr protein kinase family.</p> <p>Contains 1 protein kinase domain.</p>
<b>翻訳後修飾</b>	<p>Autophosphorylated.</p>
<b>細胞内局在</b>	<p>Mitochondrion outer membrane. Cytoplasm &gt; cytosol.</p>

## 画像



ab116177 on a 15% SDS-PAGE (3ug)

**Please note:** All products are "FOR RESEARCH USE ONLY. NOT FOR USE IN DIAGNOSTIC PROCEDURES"

### **Our Abpromise to you: Quality guaranteed and expert technical support**

---

- Replacement or refund for products not performing as stated on the datasheet
- Valid for 12 months from date of delivery
- Response to your inquiry within 24 hours
  
- We provide support in Chinese, English, French, German, Japanese and Spanish
- Extensive multi-media technical resources to help you
- We investigate all quality concerns to ensure our products perform to the highest standards

If the product does not perform as described on this datasheet, we will offer a refund or replacement. For full details of the Abpromise, please visit <https://www.abcam.co.jp/abpromise> or contact our technical team.

### **Terms and conditions**

---

- Guarantee only valid for products bought direct from Abcam or one of our authorized distributors