

Recombinant human Pin1 protein ab51230

2 References 画像数 1

製品の詳細

製品名	Recombinant human Pin1 protein
生理活性	Specific activity is > 1,200nmol/min/mg, and is defined as the amount of enzyme that cleaves of suc-AAPF-pNA per minute at 37C.
精製度	> 95 % SDS-PAGE.
エンドキシン・レベル	< 1.000 Eu/μg
発現系	Escherichia coli
タンパク質長	Full length protein
Animal free	No
由来	Recombinant
生物種	Human
配列	MADEEKLPPGWEKRMSRSSGRVYYFNHITNASQWERPSGNSS SGGKNGQG EPARVRCSHLLVKHSQSRRPSSWRQEKITRTKEEALELINGY IQKIKSGE EDFESLASQFSDCSSAKARGDLGAFSRGQMCKPFEDASFALR TGEMSGPV FTDSGIHIILRTE

特性

Our **Abpromise guarantee** covers the use of **ab51230** in the following tested applications.

The application notes include recommended starting dilutions; optimal dilutions/concentrations should be determined by the end user.

アプリケーション	Functional Studies
	SDS-PAGE
質量分析	MALDI-TOF
製品の状態	Liquid

前処理および保存

保存方法および安定性	Shipped at 4°C. Store at +4°C short term (1-2 weeks). Upon delivery aliquot. Store at -20°C or -80°C. Avoid freeze / thaw cycle.
------------	--

pH: 7.50

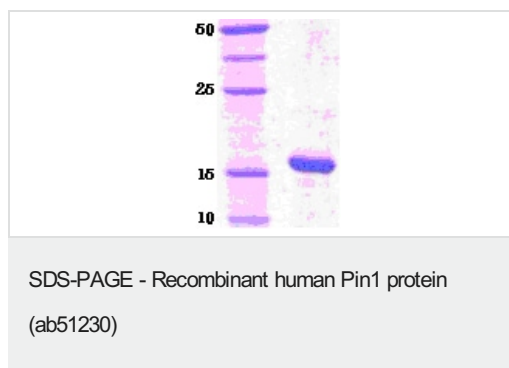
Constituents: 0.077% DTT, 0.316% Tris HCl, 20% Glycerol, 0.58% Sodium chloride

This product is an active protein and may elicit a biological response in vivo, handle with caution.

関連情報

機能	Essential PPlase that regulates mitosis presumably by interacting with NIMA and attenuating its mitosis-promoting activity. Displays a preference for an acidic residue N-terminal to the isomerized proline bond. Catalyzing pSer/Thr-Pro cis/trans isomerizations.
配列類似性	Contains 1 PpiC domain. Contains 1 WW domain.
ドメイン	The WW domain is required for the interaction with STIL and KIF20B.
翻訳後修飾	Phosphorylated upon DNA damage, probably by ATM or ATR.
細胞内局在	Nucleus.

画像



ab51230 run on a 14% SDS-PAGE gel with molecular weight markers.

Please note: All products are "FOR RESEARCH USE ONLY. NOT FOR USE IN DIAGNOSTIC PROCEDURES"

Our Abpromise to you: Quality guaranteed and expert technical support

- Replacement or refund for products not performing as stated on the datasheet
- Valid for 12 months from date of delivery
- Response to your inquiry within 24 hours
- We provide support in Chinese, English, French, German, Japanese and Spanish
- Extensive multi-media technical resources to help you
- We investigate all quality concerns to ensure our products perform to the highest standards

If the product does not perform as described on this datasheet, we will offer a refund or replacement. For full details of the Abpromise, please visit <https://www.abcam.co.jp/abpromise> or contact our technical team.

Terms and conditions

- Guarantee only valid for products bought direct from Abcam or one of our authorized distributors