

Recombinant Human PICOT protein ab95263

画像数 1

製品の詳細

製品名	Recombinant Human PICOT protein
精製度	> 95 % SDS-PAGE. ab95263 is purified using conventional chromatography techniques.
発現系	Escherichia coli
タンパク質長	Full length protein
Animal free	No
由来	Recombinant
生物種	Human
配列	<p> MGSSHHHHHH SSGLVPRGSH MAAGAAEAAV AAVEEVGSAG QFEELLRLKA KSLLVVHFWA PWAPQCAQMN EVMAELAKEL PQVSFVKLEA EGVPEVSEKY EISSVPTFLF FKNSQKIDRL DGAHAPELTK KVQRHASSGS FLPSANEHLK EDLNLRLKKL THAAPCMLFM KGTPQEPRCG FSKQMVEILH KHNIQFSSFD IFSDEEVRQG LKAYSSWPTY PQLYVSGELI GGLDIIKELE ASEELDTICP KAPKLEERLK VLTNKASVML FMKGNKQEAQ CGFSKQILEI LNSTGVEYET FDILEDEEVR QGLKAYSNWP TYPQLYVKGE LVGGLDIVKE LKENGELLPI LRGEN </p>

特性

Our **Abpromise guarantee** covers the use of **ab95263** in the following tested applications.

The application notes include recommended starting dilutions; optimal dilutions/concentrations should be determined by the end user.

アプリケーション	SDS-PAGE
製品の状態	Liquid
備考	Previously labelled as TXNL2.

前処理および保存

保存方法および安定性	Shipped at 4°C. Upon delivery aliquot and store at -20°C or -80°C. Avoid repeated freeze / thaw
------------	---

cycles.

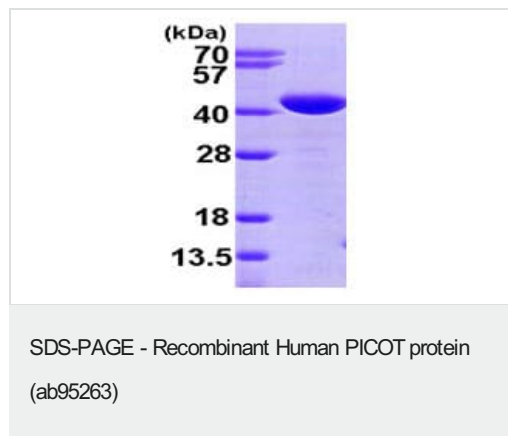
pH: 8.00

Constituents: 0.0154% DTT, 0.316% Tris HCl, 10% Glycerol (glycerin, glycerine)

関連情報

機能	Critical negative regulator of cardiac hypertrophy and a positive inotropic regulator (By similarity). May play a role in regulating the function of the thioredoxin system. Does not possess any thioredoxin activity since it lacks the conserved motif that is essential for catalytic activity.
組織特異性	Expressed in heart, spleen, testis and, to a lower extent, in thymus and peripheral blood leukocytes. Weakly expressed in lung, placenta, colon and small intestine.
配列類似性	Contains 2 glutaredoxin domains. Contains 1 thioredoxin domain.
ドメイン	The thioredoxin domain lacks the two redox-active cysteines. This strongly suggests that it lacks thioredoxin activity.
細胞内局在	Cytoplasm > cell cortex. Cytoplasm > myofibril > sarcomere > Z line. Under the plasma membrane. After PMA stimulation, GLRX3 and PRKCQ/PKC- θ translocate to a more extended submembrane area. In the Z line, found associated with CSRP3.

画像



15% SDS-PAGE analysis of 3 μ g ab95263.

Please note: All products are "FOR RESEARCH USE ONLY. NOT FOR USE IN DIAGNOSTIC PROCEDURES"

Our Abpromise to you: Quality guaranteed and expert technical support

- Replacement or refund for products not performing as stated on the datasheet
- Valid for 12 months from date of delivery
- Response to your inquiry within 24 hours
- We provide support in Chinese, English, French, German, Japanese and Spanish
- Extensive multi-media technical resources to help you
- We investigate all quality concerns to ensure our products perform to the highest standards

If the product does not perform as described on this datasheet, we will offer a refund or replacement. For full details of the Abpromise, please visit <https://www.abcam.co.jp/abpromise> or contact our technical team.

Terms and conditions

- Guarantee only valid for products bought direct from Abcam or one of our authorized distributors