

Product datasheet

Recombinant Human PI 3 Kinase catalytic subunit alpha/PIK3CA protein ab159127

画像数 1

製品の詳細

製品名	Recombinant Human PI 3 Kinase catalytic subunit alpha/PIK3CA protein
発現系	Wheat germ
タンパク質長	Protein fragment
Animal free	No
由来	Recombinant
生物種	Human
配列	DFLIVISKGAQECTKTREFERFQEMCYKAYLAIRQHANLFIN LFSMMLGS GMPELQSFDDIAYIRKTLALDKTEQEALEYFMKQMNDAAHHGG WTTKMDWI FHTIKQHALN
領域	959 to 1068
タグ	GST tag N-Terminus

特性

Our **Abpromise guarantee** covers the use of **ab159127** in the following tested applications.
The application notes include recommended starting dilutions; optimal dilutions/concentrations should be determined by the end user.

アプリケーション	ELISA Western blot
製品の状態	Liquid
備考	

前処理および保存

保存方法および安定性	Shipped on dry ice. Upon delivery aliquot and store at -80°C. Avoid freeze / thaw cycles. pH: 8.00 Constituents: 0.31% Glutathione, 0.79% Tris HCl
------------	--

関連情報

機能

Phosphorylates PtdIns, PtdIns4P and PtdIns(4,5)P2 with a preference for PtdIns(4,5)P2.

関連疾患

Defects in PIK3CA are associated with colorectal cancer (CRC) [MIM:114500].

Defects in PIK3CA are a cause of susceptibility to breast cancer (BC) [MIM:114480]. A common malignancy originating from breast epithelial tissue. Breast neoplasms can be distinguished by their histologic pattern. Invasive ductal carcinoma is by far the most common type. Breast cancer is etiologically and genetically heterogeneous. Important genetic factors have been indicated by familial occurrence and bilateral involvement. Mutations at more than one locus can be involved in different families or even in the same case.

Defects in PIK3CA are a cause of susceptibility to ovarian cancer (OC) [MIM:167000]. Ovarian cancer common malignancy originating from ovarian tissue. Although many histologic types of ovarian neoplasms have been described, epithelial ovarian carcinoma is the most common form. Ovarian cancers are often asymptomatic and the recognized signs and symptoms, even of late-stage disease, are vague. Consequently, most patients are diagnosed with advanced disease.

Defects in PIK3CA may underlie hepatocellular carcinoma (HCC) [MIM:114550].

Defects in PIK3CA are a cause of keratosis seborrheic (KERSEB) [MIM:182000]. A common benign skin tumor. Seborrheic keratoses usually begin with the appearance of one or more sharply defined, light brown, flat macules. The lesions may be sparse or numerous. As they initially grow, they develop a velvety to finely verrucous surface, followed by an uneven warty surface with multiple plugged follicles and a dull or lackluster appearance.

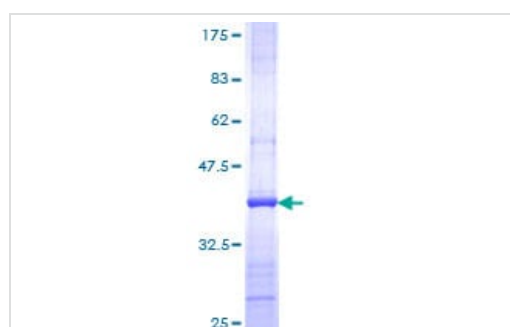
配列類似性

Belongs to the PI3/PI4-kinase family.

Contains 1 C2 domain.

Contains 1 PI3K/PI4K domain.

画像



SDS-PAGE - Recombinant Human PI 3 Kinase catalytic subunit alpha/PIK3CA protein (ab159127)

ab159127 on a 12.5% SDS-PAGE stained with Coomassie Blue.

Please note: All products are "FOR RESEARCH USE ONLY. NOT FOR USE IN DIAGNOSTIC PROCEDURES"

Our Abpromise to you: Quality guaranteed and expert technical support

- Replacement or refund for products not performing as stated on the datasheet

- Valid for 12 months from date of delivery
- Response to your inquiry within 24 hours
- We provide support in Chinese, English, French, German, Japanese and Spanish
- Extensive multi-media technical resources to help you
- We investigate all quality concerns to ensure our products perform to the highest standards

If the product does not perform as described on this datasheet, we will offer a refund or replacement. For full details of the Abpromise, please visit <https://www.abcam.co.jp/abpromise> or contact our technical team.

Terms and conditions

- Guarantee only valid for products bought direct from Abcam or one of our authorized distributors