

# Recombinant Human PHAP1 protein ab101155

画像数 1

### 製品の詳細

製品名	Recombinant Human PHAP1 protein
精製度	> 90 % SDS-PAGE. ab101155 was purified using conventional chromatography techniques.
発現系	Escherichia coli
アクセッション番号	<b><u>P39687</u></b>
タンパク質長	Full length protein
Animal free	No
由来	Recombinant
生物種	Human
配列	<p>MGSSHHHHHSSGLVPRGSHMEMGRRIHLELRNRTPSDVK            ELVLDNSRSN            EGKLEGLTDFELEEFLSTINVGLTSIANLPKLNKLELS            DNRVSGGL            EVLAEKCPNLTHNLSGNKIKDLSTIEPLKKLENLKSLEDFN            CEVTNLND            YRENVFKLLPQLTYLDGYDRDDKEAPSDAEGYVEGLDDEEE            DEDEEYD            EDAQVVEDEEDEDDEEEEGEEEDVSGEEEEEDEEGYNDGEVDDE            EDEEELGE EERGQKRKREPEDEGEDDD</p>
予測される分子量	31 kDa including tags
領域	1 to 249
タグ	His tag N-Terminus

### 特性

Our **Abpromise guarantee** covers the use of **ab101155** in the following tested applications.

The application notes include recommended starting dilutions; optimal dilutions/concentrations should be determined by the end user.

アプリケーション	SDS-PAGE
	Mass Spectrometry
質量分析	MALDI-TOF
製品の状態	Liquid

## 前処理および保存

### 保存方法および安定性

Shipped at 4°C. Store at +4°C short term (1-2 weeks). Upon delivery aliquot. Store at -20°C or -80°C. Avoid freeze / thaw cycle.

pH: 8.00

Constituents: 0.00174% PMSF, 0.0154% DTT, 0.316% Tris HCl, 10% Glycerol (glycerin, glycerine), 0.58% Sodium chloride

## 関連情報

### 機能

Implicated in a number of cellular processes, including proliferation, differentiation, caspase-dependent and caspase-independent apoptosis, suppression of transformation (tumor suppressor), inhibition of protein phosphatase 2A, regulation of mRNA trafficking and stability in association with ELAVL1, and inhibition of acetyltransferases as part of the INHAT (inhibitor of histone acetyltransferases) complex. Plays a role in E4F1-mediated transcriptional repression.

### 組織特異性

Expressed in all tissues tested. Highly expressed in kidney and skeletal muscle, moderate levels of expression in brain, placenta and pancreas, and weakly expressed in lung. Found in all regions of the brain examined (amygdala, caudate nucleus, corpus callosum, hippocampus and thalamus), with highest levels in amygdala.

### 配列類似性

Belongs to the ANP32 family.  
Contains 4 LRR (leucine-rich) repeats.  
Contains 1 LRRCT domain.

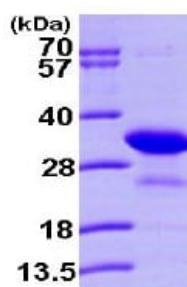
### 翻訳後修飾

Phosphorylated on serine residues.  
The N-terminus is blocked.  
Some glutamate residues are glycosylated by TTLL8. This modification occurs exclusively on glutamate residues and results in a glycine chain on the gamma-carboxyl group.

### 細胞内局在

Nucleus. Cytoplasm. Endoplasmic reticulum. Translocates to the cytoplasm during the process of neuritogenesis (By similarity). Shuttles between nucleus and cytoplasm.

## 画像



15% SDS-PAGE (3 µg)

SDS-PAGE - Recombinant Human PHAP1 protein  
(ab101155)

**Please note:** All products are "FOR RESEARCH USE ONLY. NOT FOR USE IN DIAGNOSTIC PROCEDURES"

### **Our Abpromise to you: Quality guaranteed and expert technical support**

---

- Replacement or refund for products not performing as stated on the datasheet
- Valid for 12 months from date of delivery
- Response to your inquiry within 24 hours
  
- We provide support in Chinese, English, French, German, Japanese and Spanish
- Extensive multi-media technical resources to help you
- We investigate all quality concerns to ensure our products perform to the highest standards

If the product does not perform as described on this datasheet, we will offer a refund or replacement. For full details of the Abpromise, please visit <https://www.abcam.co.jp/abpromise> or contact our technical team.

### **Terms and conditions**

---

- Guarantee only valid for products bought direct from Abcam or one of our authorized distributors