

Recombinant Human PER2 protein ab112382

画像数 1

製品の詳細

製品名	Recombinant Human PER2 protein
生理活性	Useful for Antibody Production and Protein Array
発現系	Wheat germ
アクセッション番号	<u>O15055</u>
タンパク質長	Protein fragment
Animal free	No
由来	Recombinant
生物種	Human
配列	MNGYAEFPSPSNPTKEPVEPQPSQVPLQEDVDMSSGSSGHE TNENCSTG RDSQGSDCDDSGKELGMLVEPPDARQSPDTFSLMMAKSEHNP STSGCSSD
予測される分子量	37 kDa including tags
領域	1 to 100

特性

Our **Abpromise guarantee** covers the use of **ab112382** in the following tested applications.

The application notes include recommended starting dilutions; optimal dilutions/concentrations should be determined by the end user.

アプリケーション	ELISA SDS-PAGE Western blot
製品の状態	Liquid
備考	This product is useful for Antibody Production and Protein Array.

前処理および保存

保存方法および安定性	Shipped on dry ice. Upon delivery aliquot and store at -80°C. Avoid freeze / thaw cycles. pH: 8.00
------------	---

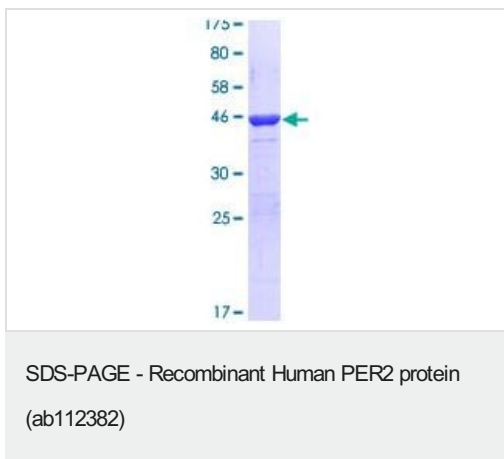
Constituents: 0.31% Glutathione, 0.79% Tris HCl

Glutathione is reduced

関連情報

機能	Component of the circadian clock mechanism which is essential for generating circadian rhythms. Negative element in the circadian transcriptional loop. Influences clock function by interacting with other circadian regulatory proteins and transporting them to the nucleus. Negatively regulates CLOCK NPAS2-BMAL1 BMAL2-induced transactivation.
組織特異性	Widely expressed. Found in heart, brain, placenta, lung, liver, skeletal muscle, kidney and pancreas. High levels in skeletal muscle and pancreas. Low level in lung.
関連疾患	Defects in PER2 are a cause of familial advanced sleep-phase syndrome (FASPS) [MIM:604348]. FASPS is characterized by very early sleep onset and offset. Individuals are 'morning larks' with a 4 hours advance of the sleep, temperature and melatonin rhythms.
配列類似性	Contains 1 PAC (PAS-associated C-terminal) domain. Contains 2 PAS (PER-ARNT-SIM) domains.
翻訳後修飾	Phosphorylated by CSNK1E and CSNK1D. Phosphorylation results in PER2 protein degradation.
細胞内局在	Nucleus. Cytoplasm. Mainly nuclear. Nucleocytoplasmic shuttling is effected by interaction with other circadian core oscillator proteins and/or by phosphorylation. Retention of PER1 in the cytoplasm occurs through PER1-PER2 heterodimer formation or by interaction with CSNK1E and/or phosphorylation which appears to mask the PER nuclear localization signal. Also translocated to the nucleus by CRY1 or CRY2.

画像



ab112382 analysed by 12.5% SDS-PAGE and stained with Coomassie Blue.

Please note: All products are "FOR RESEARCH USE ONLY. NOT FOR USE IN DIAGNOSTIC PROCEDURES"

Our Abpromise to you: Quality guaranteed and expert technical support

- Replacement or refund for products not performing as stated on the datasheet
- Valid for 12 months from date of delivery
- Response to your inquiry within 24 hours
- We provide support in Chinese, English, French, German, Japanese and Spanish
- Extensive multi-media technical resources to help you
- We investigate all quality concerns to ensure our products perform to the highest standards

If the product does not perform as described on this datasheet, we will offer a refund or replacement. For full details of the Abpromise, please visit <https://www.abcam.co.jp/abpromise> or contact our technical team.

Terms and conditions

- Guarantee only valid for products bought direct from Abcam or one of our authorized distributors