

Recombinant human PDE4D3 protein ab80332

画像数 3

製品の詳細

製品名	Recombinant human PDE4D3 protein
生理活性	Specific Activity: 3703 pmole/min/μg.
精製度	> 70 % SDS-PAGE. Affinity purified.
発現系	Baculovirus infected Sf9 cells
タンパク質長	Full length protein
Animal free	No
由来	Recombinant
生物種	Human
タグ	GST tag N-Terminus

特性

Our **Abpromise guarantee** covers the use of **ab80332** in the following tested applications.

The application notes include recommended starting dilutions; optimal dilutions/concentrations should be determined by the end user.

アプリケーション	Functional Studies SDS-PAGE Western blot
----------	--

製品の状態	Liquid
-------	--------

前処理および保存

保存方法および安定性	Shipped on Dry Ice. Upon delivery aliquot. Store at -80°C. Avoid freeze / thaw cycle. pH: 8.00 Constituents: 0.0462% (R*,R*)-1,4-Dimercaptobutan-2,3-diol, 0.395% Tris HCl, 0.05% Tween, 30% Glycerol (glycerin, glycerine), 0.58% Sodium chloride This product is an active protein and may elicit a biological response in vivo, handle with caution.
------------	--

関連情報

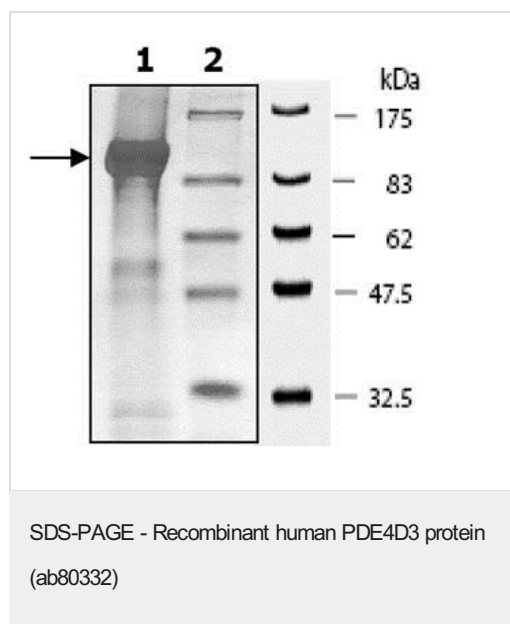
関連性

Cyclic AMP-dependent phosphodiesterase type D (PDE4D) family is comprised of 5 variants (PDE4D1, D2, D3, D4 and D5). One or more PDE4D subtype-variants are ubiquitously present in all mammalian cells. In CNS all five PDE4D subtype-variants are expressed in varying ratios and their activity is regulated in tandem with GPCRs stimulation. Peripheral tissues also exhibit differential expression of PDE4D variants. PDE4D1/D2 mRNA levels rise in response to an increase in cAMP. Short-term regulation of PDE4D variants involved PKA, MAP kinases and Erk2 phosphorylation that results in rapid change in their enzymatic activities. Other regulatory mechanism involved protein-protein interactions with cytoskeletal scaffolding proteins.

細胞内局在

Cell Membrane and Cytoplasmic

画像



10% SDS-PAGE, Coomassie staining.

Lane 1: ab80332, 4 μ g.

Lane 2: Protein marker.

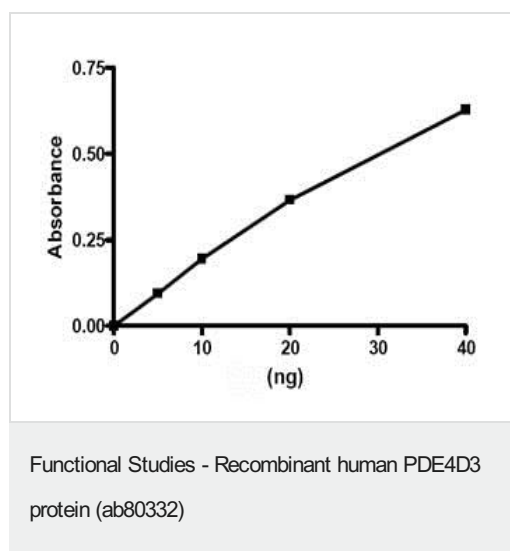
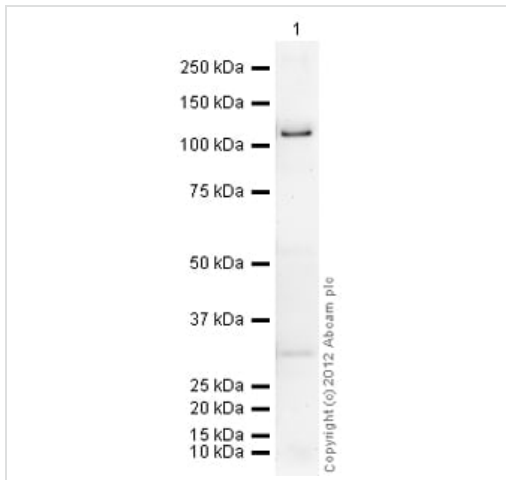


Image showing specific activity of ab80332.



Western blot - Recombinant human PDE4D3 protein
(ab80332)

Please note: All products are "FOR RESEARCH USE ONLY. NOT FOR USE IN DIAGNOSTIC PROCEDURES"

Our Abpromise to you: Quality guaranteed and expert technical support

- Replacement or refund for products not performing as stated on the datasheet
- Valid for 12 months from date of delivery
- Response to your inquiry within 24 hours

- We provide support in Chinese, English, French, German, Japanese and Spanish
- Extensive multi-media technical resources to help you
- We investigate all quality concerns to ensure our products perform to the highest standards

If the product does not perform as described on this datasheet, we will offer a refund or replacement. For full details of the Abpromise, please visit <https://www.abcam.co.jp/abpromise> or contact our technical team.

Terms and conditions

- Guarantee only valid for products bought direct from Abcam or one of our authorized distributors