

Recombinant human PDE2A protein ab125613

画像数 4

製品の詳細

製品名	Recombinant human PDE2A protein
生理活性	The specific activity of ab125613 was determined to be 6000 nmol/mg/min.
精製度	> 70 % SDS-PAGE. Purity determined to be >70% by densitometry. Affinity purified.
発現系	Baculovirus infected Sf9 cells
アクセッション番号	<u>O00408</u>
タンパク質長	Full length protein
Animal free	No
由来	Recombinant
生物種	Human
予測される分子量	130 kDa including tags
領域	2 to 941

特性

Our **Abpromise guarantee** covers the use of **ab125613** in the following tested applications.

The application notes include recommended starting dilutions; optimal dilutions/concentrations should be determined by the end user.

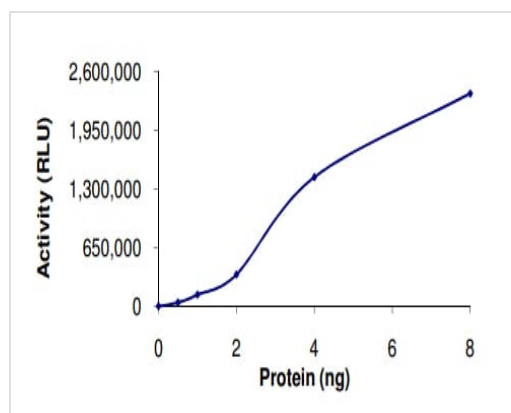
アプリケーション	Functional Studies SDS-PAGE
製品の状態	Liquid

前処理および保存

保存方法および安定性	Shipped on dry ice. Upon delivery aliquot and store at -80°C. Avoid freeze / thaw cycles. pH: 7.50 Constituents: 0.002% PMSF, 0.004% DTT, 0.79% Tris HCl, 25% Glycerol (glycerin, glycerine), 0.88% Sodium chloride This product is an active protein and may elicit a biological response in vivo, handle with caution.
------------	---

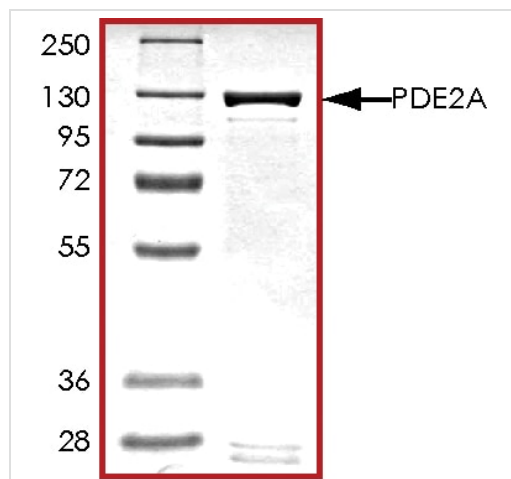
機能	Cyclic nucleotide phosphodiesterase with a dual-specificity for the second messengers cAMP and cGMP, which are key regulators of many important physiological processes.
組織特異性	Expressed in brain and to a lesser extent in heart, placenta, lung, skeletal muscle, kidney and pancreas.
配列類似性	Belongs to the cyclic nucleotide phosphodiesterase family. PDE2 subfamily. Contains 2 GAF domains.
ドメイン	GAF 1 functions as a dimerization domain, whereas GAF 2 binds cGMP, which causes activation of the catalytic activity of the enzyme.
細胞内局在	Membrane.

画像



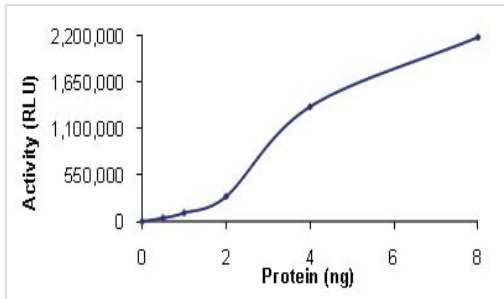
The specific activity of PDE2A (ab125613) was determined to be ~6000 nmol/min/mg as per activity assay protocol

Functional Studies - Recombinant human PDE2A protein (ab125613)



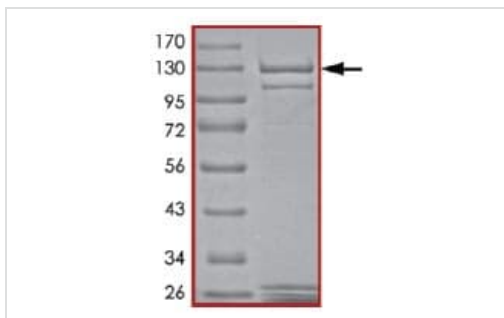
SDS PAGE analysis of ab125613

SDS-PAGE - Recombinant human PDE2A protein (ab125613)



Sample Phosphodiesterase Assay showing the specific activity of ab125613 as 5750 nmol/mg/min.

Functional Studies - Recombinant human PDE2A protein (ab125613)



SDS-PAGE analysis of ab125613.

SDS-PAGE - Recombinant human PDE2A protein (ab125613)

Please note: All products are "FOR RESEARCH USE ONLY. NOT FOR USE IN DIAGNOSTIC PROCEDURES"

Our Abpromise to you: Quality guaranteed and expert technical support

- Replacement or refund for products not performing as stated on the datasheet
- Valid for 12 months from date of delivery
- Response to your inquiry within 24 hours
- We provide support in Chinese, English, French, German, Japanese and Spanish
- Extensive multi-media technical resources to help you
- We investigate all quality concerns to ensure our products perform to the highest standards

If the product does not perform as described on this datasheet, we will offer a refund or replacement. For full details of the Abpromise, please visit <https://www.abcam.co.jp/abpromise> or contact our technical team.

Terms and conditions

- Guarantee only valid for products bought direct from Abcam or one of our authorized distributors