

Recombinant human PDE10A protein ab101116

画像数 3

製品の詳細

製品名	Recombinant human PDE10A protein
生理活性	The specific activity of ab101116 was determined to be 92 nmol/min/mg as per activity assay.
精製度	> 80 % SDS-PAGE. Affinity purified.
発現系	Baculovirus infected insect cells
アクセッション番号	<u>Q9Y233</u>
タンパク質長	Protein fragment
Animal free	No
由来	Recombinant
生物種	Human
配列	MQGVVYELNSYIEQRLDTGGDNQLLLYELSSIIKIATKADGF ALYFLGEC NNSLCIFTPPGIKEGKPRILIPAGPITQGTTVSAYVAKSRKTL LVEDILGD ERFPRGTGLESGETRIQSVLCLPIVTAIGDLIGILELYRHWGK EAFCLSHQ EVATANLAWASVAIHQVQVCRGLAKQTELNDFLLDVSKTYFD NIVAIDSL LEHIMIYAKNLVNADRCALFQVDHKNKELYSDLFDIGEEKEG KPVFKKTK EIRFSIEKGIAGQVARTGEVLNIPDAYADPRFNREVDLYTGY TTRNILCM PIVSRGSVIGVQMVNKGSGSAFSKTDENNFKMFAVFCALAL HCANMYHR IRHSECIYRVTEKLSYHSICTSEEWQGLMQFTLPVRLCKEI ELFHFDIG PFENMWPGIFVYMVHRSCGTSCFELEKLCRFIMSVKKNYRRV PYHNWKHA VTVAHCMYAILQNNHTLFTDLERKGLLIACLCHDLDRGFNS SYLQKFDH PLAALYSTSTMEQHHSQTVSILQLEGHNIFSTLSSEYEQV LEIIRKAI IATDLALYFGNRKQLEEMYQTGSLNLNQSHRDRVIGLMMTA CDLCSVTK

LWPVTKLTANDIYAEFWAEGDEMKKLGIQIPMMDRDKKDEV
PQGQLGFY
NAVAIPCYTTLTQILPPTPELLKACRDNLSQWEKVIRGEETA
TWISSPSV AQKAAASED

予測される分子量 102 kDa including tags
領域 71 to 779

特性

Our **Abpromise guarantee** covers the use of **ab101116** in the following tested applications.

The application notes include recommended starting dilutions; optimal dilutions/concentrations should be determined by the end user.

アプリケーション Functional Studies
SDS-PAGE

製品の状態 Liquid

前処理および保存

保存方法および安定性 Shipped on dry ice. Upon delivery aliquot and store at -80°C. Avoid freeze / thaw cycles.
pH: 7.50
Constituents: 0.307% Glutathione, 0.00174% PMSF, 0.00385% DTT, 0.79% Tris HCl, 0.00292% EDTA, 25% Glycerol (glycerin, glycerine), 0.87% Sodium chloride
This product is an active protein and may elicit a biological response in vivo, handle with caution.

関連情報

機能 Plays a role in signal transduction by regulating the intracellular concentration of cyclic nucleotides. Can hydrolyze both cAMP and cGMP, but has higher affinity for cAMP and is more efficient with cAMP as substrate.

組織特異性 Abundant in the putamen and caudate nucleus regions of brain and testis, moderately expressed in the thyroid gland, pituitary gland, thalamus and cerebellum.

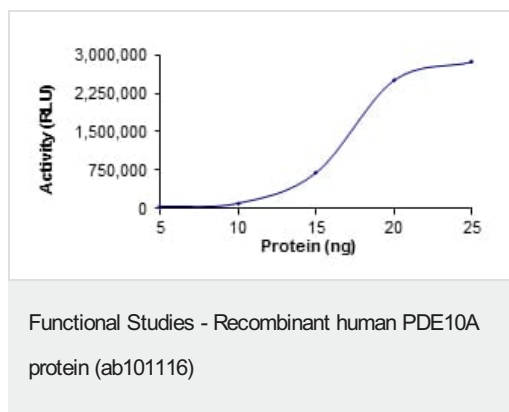
パスウェイ Purine metabolism; 3',5'-cyclic AMP degradation; AMP from 3',5'-cyclic AMP: step 1/1.
Purine metabolism; 3',5'-cyclic GMP degradation; GMP from 3',5'-cyclic GMP: step 1/1.

配列類似性 Belongs to the cyclic nucleotide phosphodiesterase family.
Contains 2 GAF domains.

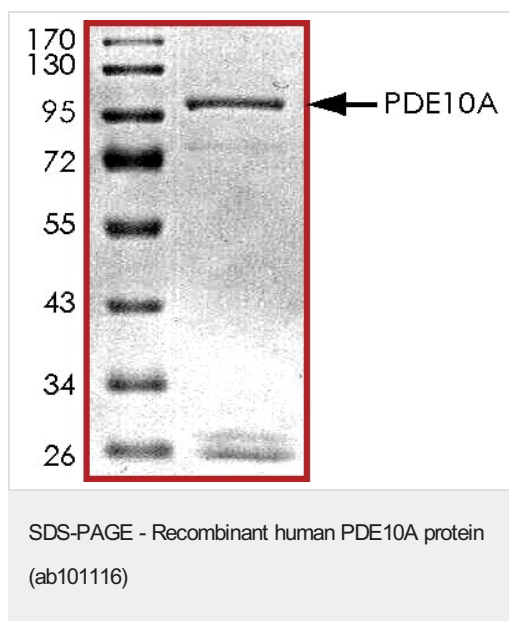
ドメイン The tandem GAF domains bind cAMP, and regulate enzyme activity. The binding of cAMP stimulates enzyme activity.
Composed of a C-terminal catalytic domain containing two divalent metal sites and an N-terminal regulatory domain which contains one cyclic nucleotide-binding region.

細胞内局在 Cytoplasm. Located mostly to soluble cellular fractions.

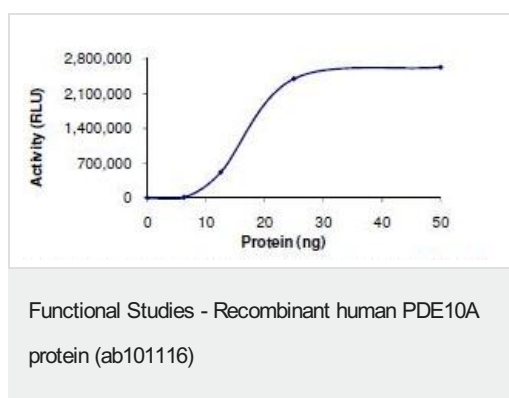
画像



The specific activity of PDE10A (ab101116) was determined to be 100 nmol/min/mg as per activity assay protocol



SDS PAGE analysis of ab101116



The specific activity of ab101116 was determined to be 92 nmol/min/mg by activity assay.

Please note: All products are "FOR RESEARCH USE ONLY. NOT FOR USE IN DIAGNOSTIC PROCEDURES"

Our Abpromise to you: Quality guaranteed and expert technical support

- Replacement or refund for products not performing as stated on the datasheet
- Valid for 12 months from date of delivery
- Response to your inquiry within 24 hours

- We provide support in Chinese, English, French, German, Japanese and Spanish
- Extensive multi-media technical resources to help you
- We investigate all quality concerns to ensure our products perform to the highest standards

If the product does not perform as described on this datasheet, we will offer a refund or replacement. For full details of the Abpromise, please visit <https://www.abcam.co.jp/abpromise> or contact our technical team.

Terms and conditions

- Guarantee only valid for products bought direct from Abcam or one of our authorized distributors