

## Product datasheet

# Recombinant Human PDCD6/ALG-2 protein ab104605

画像数 1

### 製品の詳細

---

製品名	Recombinant Human PDCD6/ALG-2 protein
精製度	> 95 % SDS-PAGE. ab104605 is purified using conventional chromatography techniques.
発現系	Escherichia coli
アクセッション番号	<b><u>O75340</u></b>
タンパク質長	Full length protein
Animal free	No
由来	Recombinant
生物種	Human
配列	<b>MGSSHHHHHSSGLVPRGSHMAAYSYPGPGAGPGAAGA ALPDQSFLWN VFQRVDKDRSGVISDTELQQALSNGTWTFPNPVTVRSIISMF DRENKAGV NFSEFTGVWKYITDWQNVFRTYDRDNSGMIDKNEKQALSGF GYRLSDQF HDILIRKFDRQGRGQIAFDDFIQGCIVLQRLTDIFRRYDTDQ DGWIQVSY EQYLSMVFSIV</b>
予測される分子量	24 kDa including tags
領域	1 to 191
タグ	His tag N-Terminus

### 特性

---

Our **Abpromise guarantee** covers the use of **ab104605** in the following tested applications.

The application notes include recommended starting dilutions; optimal dilutions/concentrations should be determined by the end user.

アプリケーション	SDS-PAGE Mass Spectrometry
質量分析	MALDI-TOF
製品の状態	Liquid
備考	Previously labelled as PDCD6.

## 前処理および保存

### 保存方法および安定性

Shipped at 4°C. Upon delivery aliquot and store at -20°C or -80°C. Avoid repeated freeze / thaw cycles.

pH: 3.50

Constituents: 0.294% Sodium citrate, 40% Glycerol (glycerin, glycerine)

## 関連情報

### 機能

Calcium-binding protein required for T-cell receptor-, Fas-, and glucocorticoid-induced cell death. May mediate Ca(2+)-regulated signals along the death pathway (By similarity). Calcium-dependent adapter necessary for the association between PDCD6IP and TSG101. Interaction with DAPK1 can accelerate apoptotic cell death by increasing caspase-3 activity. May inhibit KDR/VEGFR2-dependent angiogenesis; the function involves inhibition of VEGF-induced phosphorylation of the Akt signaling pathway. Seems to play a role in the regulation of the distribution and function of MCOLN1 in the endosomal pathway. Isoform 2 has a lower Ca(2+) affinity than isoform 1. Isoform 1 and, to a lesser extent, isoform 2, can stabilize SHISA5.

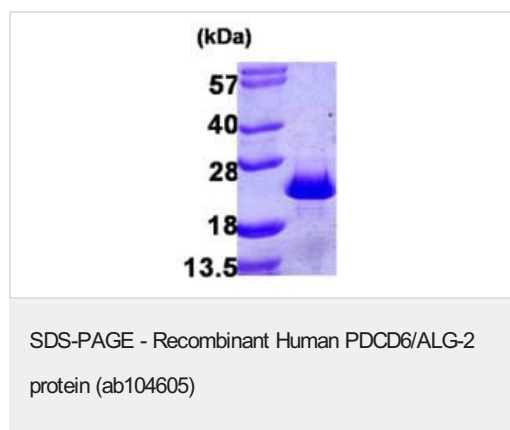
### 配列類似性

Contains 5 EF-hand domains.

### 細胞内局在

Nucleus membrane. Endoplasmic reticulum membrane. Nucleus. Endosome. Interaction with RBM22 induces relocalization from the cytoplasm to the nucleus. Translocated from the cytoplasm to the nucleus after heat shock cell treatment. Accumulates in cytoplasmic vesicle-like organelles after heat shock treatment, which may represent stress granules.

## 画像



15% SDS-PAGE showing ab104605 (3 µg) at approximately 24 kDa.

**Please note:** All products are "FOR RESEARCH USE ONLY. NOT FOR USE IN DIAGNOSTIC PROCEDURES"

## Our Promise to you: Quality guaranteed and expert technical support

- Replacement or refund for products not performing as stated on the datasheet
- Valid for 12 months from date of delivery
- Response to your inquiry within 24 hours
- We provide support in Chinese, English, French, German, Japanese and Spanish

- Extensive multi-media technical resources to help you
- We investigate all quality concerns to ensure our products perform to the highest standards

If the product does not perform as described on this datasheet, we will offer a refund or replacement. For full details of the Abpromise, please visit <https://www.abcam.co.jp/abpromise> or contact our technical team.

### **Terms and conditions**

---

- Guarantee only valid for products bought direct from Abcam or one of our authorized distributors