

Recombinant Human PCM1 protein ab114699

画像数 1

製品の詳細

製品名	Recombinant Human PCM1 protein
発現系	Wheat germ
タンパク質長	Full length protein
Animal free	No
由来	Recombinant
生物種	Human
配列	<pre>MATGGGPFEDGMNDQDLPNWSNENVDDRLNNMDWGAQQKKAN RSSEKNKK KFGVESDKRVTNDISPESSPGVGRRRTKTPHTFPHSRYSQM SVPEQ AEL EKLKQRINFSDLQRSIGSDSQGRATAANNKRQLSENRPFN FLPMQINT NKSKDASTPPNRETIGSAQCKELFASALSNDLLQNCQVSEE DGRGEPAM ESSQIVSRLVQIRDYITKASSMREDLVEKNERSANVERLTHL IDHLKEQE KSYMKFLKKILARENEEEDVRTIDSAVGSGSVAESTSLNIDV QSEASDTT ARDPQQEPMEEIENLKKQHDLKRLQQEQRLRALQGRQAAL LALQHKA E QAIIVMDDSVVAETAGSLSGVSITSELNEELNDLIQRFHNQL RDSQPPAV PDNRRQAESLSLTREVSQSRKPSASERLPDEKVELFSKMRVL QEKKQKMD KLLGELHTLRDQHLNNSSSPQRSVDQRSTSAPSASVGLAPV VNGESNSL TSSVPYPTASLVSQNESENEGHLNPSEKLQ</pre>
予測される分子量	84 kDa including tags
領域	1 to 530

特性

Our **Abpromise guarantee** covers the use of **ab114699** in the following tested applications.

The application notes include recommended starting dilutions; optimal dilutions/concentrations should be determined by the end user.

アプリケーション

ELISA

SDS-PAGE

Western blot

製品の状態

Liquid

備考**前処理および保存**

保存方法および安定性

Shipped on dry ice. Upon delivery aliquot and store at -80°C. Avoid freeze / thaw cycles.

pH: 8.00

Constituents: 0.3% Glutathione, 0.79% Tris HCl

関連情報

機能

Required for centrosome assembly and function. Essential for the correct localization of several centrosomal proteins including CEP250, CETN3, PCNT and NEK2. Required to anchor microtubules to the centrosome. Involved in the biogenesis of cilia.

組織特異性

Expressed in blood, bone marrow, breast, lymph node, ovary and thyroid.

関連疾患

Defects in PCM1 are a cause of thyroid papillary carcinoma (TPC) [MIM:188550]. TPC is a common tumor of the thyroid that typically arises as an irregular, solid or cystic mass from otherwise normal thyroid tissue. Papillary carcinomas are malignant neoplasm characterized by the formation of numerous, irregular, finger-like projections of fibrous stroma that is covered with a surface layer of neoplastic epithelial cells. Note=A chromosomal aberration involving PCM1 is found in thyroid papillary carcinomas. Translocation t(8;10)(p21.3;q11.2) with RET links the protein kinase domain of RET to the major portion of PCM1.

Note=A chromosomal aberration involving PCM1 is found in a variety of hematological malignancies including atypical chronic myeloid leukemia (atypical CML) and T-cell lymphoma. Translocation t(8;9)(p22;p24) with JAK2 links the protein kinase domain of JAK2 to the major portion of PCM1.

配列類似性

Belongs to the PCM1 family.

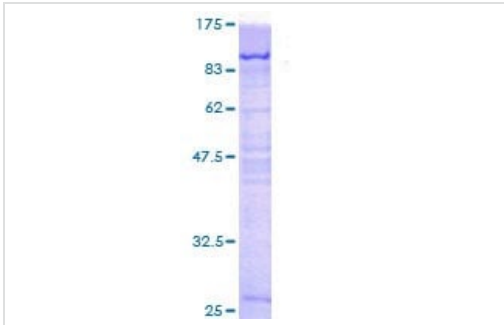
翻訳後修飾

Phosphorylated upon DNA damage, probably by ATM or ATR.

細胞内局在

Cytoplasm > cytoskeleton. Cytoplasm > cytoskeleton > centrosome. Cytoplasmic granule. Localizes to cytoplasmic granules which are enriched around the centrosome. This centrosomal enrichment requires microtubules and dynein. The majority of the protein dissociates from the centrosome during metaphase and subsequently localizes to the cleavage site in telophase.

画像



SDS-PAGE - Recombinant Human PCM1 protein
(ab114699)

12.5% SDS-PAGE showing ab114699 at approximately 84.41 kDa stained with Coomassie Blue.

Please note: All products are "FOR RESEARCH USE ONLY. NOT FOR USE IN DIAGNOSTIC PROCEDURES"

Our Abpromise to you: Quality guaranteed and expert technical support

- Replacement or refund for products not performing as stated on the datasheet
- Valid for 12 months from date of delivery
- Response to your inquiry within 24 hours
- We provide support in Chinese, English, French, German, Japanese and Spanish
- Extensive multi-media technical resources to help you
- We investigate all quality concerns to ensure our products perform to the highest standards

If the product does not perform as described on this datasheet, we will offer a refund or replacement. For full details of the Abpromise, please visit <https://www.abcam.co.jp/abpromise> or contact our technical team.

Terms and conditions

- Guarantee only valid for products bought direct from Abcam or one of our authorized distributors