

Recombinant Human PAX3 protein ab114320

画像数 1

製品の詳細

製品名	Recombinant Human PAX3 protein
発現系	Wheat germ
アクセッション番号	<u>P23760-7</u>
タンパク質長	Full length protein
Animal free	No
由来	Recombinant
生物種	Human
配列	<p>MTTLAGAVPRMMRPGPGQNYPRSGFPLEVSTPLGQGRVNQLG GVFINGRP LPNHIRHKIVEMAHHGIRPCVISRQLRVSHGCVSKILCRYQE TGSIRPGA IGGSKPKQVTTTPDVEKKIEEYKRENPGMFSWEIRDKLLKDAV CDRNTVPS VSSISRILRSKFGKGEEEEEADLERKEAESEKKAKHSIDGIL SERASAPQ SDEGSDIDSEPDLP LKRKQRRSRTTFTAEQLEELERAFERTH YPDIYTRE ELAQRAKLTEARVQVWFSNRRARWRKQAGANQLMAFNHLIPG GFPPTAMP TLPTYQLSETSYQPTSIPQAVSDPSSTVHRPQLPPSTVHQS TIPSNPDS SSAYCLPSTRHGFSSYTDSFVPPSGPSNPMNPTIGNGLSPQV MGLLTNHG GVPHQPQTDYALSPLTGGLEPTTTVSASCSQRLDHMKSLDSL PTSQSYCP PTYSTTGYSMDPVTGYQYGGYQGSFAHYLKPDI A</p>
予測される分子量	79 kDa including tags
領域	1 to 484

特性

Our **Abpromise guarantee** covers the use of **ab114320** in the following tested applications.

The application notes include recommended starting dilutions; optimal dilutions/concentrations should be determined by the end user.

アプリケーション

ELISA

SDS-PAGE

Western blot

製品の状態

Liquid

備考

前処理および保存

保存方法および安定性

Shipped on dry ice. Upon delivery aliquot and store at -80°C. Avoid freeze / thaw cycles.

pH: 8.00

Constituents: 0.3% Glutathione, 0.79% Tris HCl

関連情報

機能

Probable transcription factor associated with development of alveolar rhabdomyosarcoma.

関連疾患

Defects in PAX3 are the cause of Waardenburg syndrome type 1 (WS1) [MIM:193500]. WS1 is an autosomal dominant disorder characterized by wide bridge of nose owing to lateral displacement of the inner canthus of each eye (dystopia canthorum), pigmentary disturbances such as frontal white blaze of hair, heterochromia of irides, white eyelashes, leukoderma and sensorineural deafness. The syndrome shows variable clinical expression and some affected individuals do not manifest hearing impairment.

Defects in PAX3 are the cause of Waardenburg syndrome type 3 (WS3) [MIM:148820]; also known as Klein-Waardenburg syndrome or Waardenburg syndrome with upper limb anomalies or white forelock with malformations. WS3 is a very rare autosomal dominant disorder, which shares many of the characteristics of WS1. Patients additionally present with musculoskeletal abnormalities.

Defects in PAX3 are the cause of craniofacial-deafness-hand syndrome (CDHS) [MIM:122880]. CDHS is thought to be an autosomal dominant disease which comprises absence or hypoplasia of the nasal bones, hypoplastic maxilla, small and short nose with thin nares, limited movement of the wrist, short palpebral fissures, ulnar deviation of the fingers, hypertelorism and profound sensory-neural deafness.

Defects in PAX3 are a cause of rhabdomyosarcoma type 2 (RMS2) [MIM:268220]. It is a form of rhabdomyosarcoma, a highly malignant tumor of striated muscle derived from primitive mesenchymal cells and exhibiting differentiation along rhabdomyoblastic lines.

Rhabdomyosarcoma is one of the most frequently occurring soft tissue sarcomas and the most common in children. It occurs in four forms: alveolar, pleomorphic, embryonal and botryoidal rhabdomyosarcomas. Note=A chromosomal aberration involving PAX3 is found in rhabdomyosarcoma. Translocation (2;13)(q35;q14) with FOXO1. The resulting protein is a transcriptional activator.

Note=A chromosomal aberration involving PAX3 is a cause of rhabdomyosarcoma. Translocation t(2;2)(q35;p23) with NCOA1 generates the NCOA1-PAX3 oncogene consisting of the N-terminus part of PAX3 and the C-terminus part of NCOA1. The fusion protein acts as a transcriptional activator. Rhabdomyosarcoma is the most common soft tissue carcinoma in childhood, representing 5-8% of all malignancies in children.

配列類似性

Belongs to the paired homeobox family.

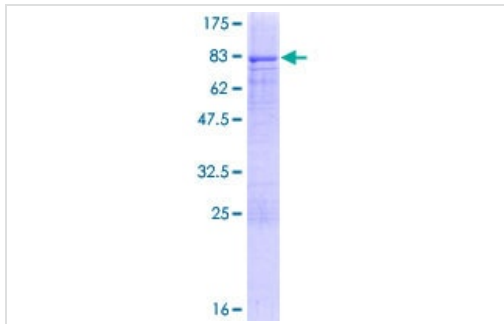
Contains 1 homeobox DNA-binding domain.

Contains 1 paired domain.

細胞内局在

Nucleus.

画像



SDS-PAGE analysis of ab114320 on a 12.5% gel stained with Coomassie Blue.

SDS-PAGE - Recombinant Human PAX3 protein
(ab114320)

Please note: All products are "FOR RESEARCH USE ONLY. NOT FOR USE IN DIAGNOSTIC PROCEDURES"

Our Abpromise to you: Quality guaranteed and expert technical support

- Replacement or refund for products not performing as stated on the datasheet
- Valid for 12 months from date of delivery
- Response to your inquiry within 24 hours
- We provide support in Chinese, English, French, German, Japanese and Spanish
- Extensive multi-media technical resources to help you
- We investigate all quality concerns to ensure our products perform to the highest standards

If the product does not perform as described on this datasheet, we will offer a refund or replacement. For full details of the Abpromise, please visit <https://www.abcam.co.jp/abpromise> or contact our technical team.

Terms and conditions

- Guarantee only valid for products bought direct from Abcam or one of our authorized distributors