

Recombinant Human PAM/Peptidyl-glycine alpha-amidating monooxygenase protein ab116775

画像数 1

製品の詳細

製品名	Recombinant Human PAM/Peptidyl-glycine alpha-amidating monooxygenase protein
発現系	Wheat germ
アクセッション番号	<u>P19021-2</u>
タンパク質長	Full length protein
Animal free	No
由来	Recombinant
生物種	Human
配列	MAGRVPSSLVLLVFPSSCLAFRSPLSVFKRFKETTRPFSNEC LGTRPVV PIDSSDFALDIRMPGVTPKQSDTYFCMSMRIPVDEEAFVIDF KPRASMDT VHHMLLFGCNMPSSTGSYWFCDEGTCTDKANILYAWARNAPP TRLPKGVG FRVGGETGSKYFVLQVHYGDISAFRDNNKDCSGVSLHLTRLP QPLIAGMY LMMSVDTVIPAGEKVVNSDISCHYKNYPMHVFAIRVHTHHLG KVVSGYRV RNGQWTLIGRQSPQLPQAFYPVGHPVDVSFGDLLAARCVFTG EGRTEATH IGGTSSDEMCLNYIMYYMEAKHAVSFMTCTQNVAPDMFRTIP PEANIPIP VKSDMVMMEHHKETEYKDKIPLLQPKREEEVLDQDFHME EALDWPGV YLLPGQVSGVALDPKNNLVIFHRGDHVWDGNSFDSKFVYQQI GLGPIEED TILVIDPNNAAVLQSSGKNLFYLPGLSIDKDGNYWVTDVAL HQVFKLDP NNKEGPVLIILGRSMQPGSDQNHFCQPTDVAVDPGTGAIYVSD GYCNSRIV QFSPSGKFITQWGEESGSSPLPGQFTVPHSLALVPLLGLQC VADRENGR IQCFKTDTKEFVREIKHSSFGRNVFAISYIPGLLFAVNGKPH FGDQEPVQ

GFVMNFSNGEIIDIFKPVKHFDMPHDIVASEDGTVYIGDAH
TNTVWKFT
LTEKLEHRSVKKAGIEVQEIKEAEAVVETKMENKPTSSELQK
MQEKQKLI
KEPGSGVPVLLITLLLVIPVVLLAIAIFIRWKKSRAFGDSE
HKLETSSG
RVLGRFRGKGSGLNLGNFFASRKGYSRKGFDRLSTEGSDQE
KEDDGSES EEEYSAPLPALAPSSS

予測される分子量 121 kDa including tags
領域 1 to 866
タグ GST tag N-Terminus

特性

Our **Abpromise guarantee** covers the use of **ab116775** in the following tested applications.

The application notes include recommended starting dilutions; optimal dilutions/concentrations should be determined by the end user.

アプリケーション ELISA
Western blot
SDS-PAGE
製品の状態 Liquid
備考 This product was previously labelled as PAM.

前処理および保存

保存方法および安定性 Shipped on dry ice. Upon delivery aliquot and store at -80°C. Avoid freeze / thaw cycles.
pH: 8.00
Constituents: 0.3% Glutathione, 0.79% Tris HCl

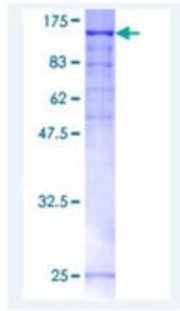
関連情報

機能 Bifunctional enzyme that catalyzes 2 sequential steps in C-terminal alpha-amidation of peptides. The monooxygenase part produces an unstable peptidyl(2-hydroxyglycine) intermediate that is dismutated to glyoxylate and the corresponding desglycine peptide amide by the lyase part. C-terminal amidation of peptides such as neuropeptides is essential for full biological activity.

配列類似性 In the C-terminal section; belongs to the peptidyl-alpha-hydroxyglycine alpha-amidating lyase family.
In the N-terminal section; belongs to the copper type II ascorbate-dependent monooxygenase family.
Contains 5 NHL repeats.

細胞内局在 Membrane and Secreted. Secreted from secretory granules.

画像



12.5% SDS-PAGE showing ab116775 at approximately 121.26kDa. Stained with Coomassie Blue.

SDS-PAGE - Recombinant Human PAM/Peptidyl-glycine alpha-amidating monooxygenase protein (ab116775)

Please note: All products are "FOR RESEARCH USE ONLY. NOT FOR USE IN DIAGNOSTIC PROCEDURES"

Our Abpromise to you: Quality guaranteed and expert technical support

- Replacement or refund for products not performing as stated on the datasheet
- Valid for 12 months from date of delivery
- Response to your inquiry within 24 hours
- We provide support in Chinese, English, French, German, Japanese and Spanish
- Extensive multi-media technical resources to help you
- We investigate all quality concerns to ensure our products perform to the highest standards

If the product does not perform as described on this datasheet, we will offer a refund or replacement. For full details of the Abpromise, please visit <https://www.abcam.co.jp/abpromise> or contact our technical team.

Terms and conditions

- Guarantee only valid for products bought direct from Abcam or one of our authorized distributors