

# Recombinant human p38 gamma/MAPK12 protein ab125651

**1 References** [画像数 2](#)

### 製品の詳細

製品名	Recombinant human p38 gamma/MAPK12 protein
生理活性	The specific activity of ab125651 was determined to be 220 nmol/min/mg.
精製度	> 90 % Densitometry. Purity was determined to be >90% by densitometry. Affinity purified.
発現系	Baculovirus infected Sf9 cells
アクセッション番号	<b><u>P53778</u></b>
タンパク質長	Full length protein
Animal free	No
由来	Recombinant
生物種	Human
予測される分子量	71 kDa including tags
領域	1 to 367

### 特性

Our **Abpromise guarantee** covers the use of **ab125651** in the following tested applications.

The application notes include recommended starting dilutions; optimal dilutions/concentrations should be determined by the end user.

アプリケーション	Western blot
	Functional Studies
	SDS-PAGE

製品の状態	Liquid
-------	--------

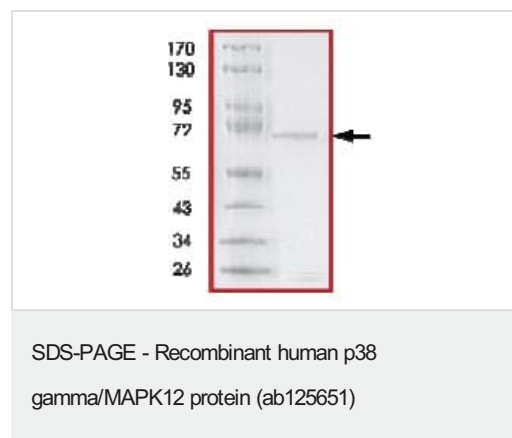
### 前処理および保存

保存方法および安定性	Shipped on dry ice. Upon delivery aliquot and store at -80°C. Avoid freeze / thaw cycles. pH: 7.50 Constituents: 0.31% Glutathione, 0.002% PMSF, 0.004% DTT, 0.79% Tris HCl, 0.003% EDTA, 25% Glycerol (glycerin, glycerine), 0.88% Sodium chloride This product is an active protein and may elicit a biological response in vivo, handle with caution.
------------	---

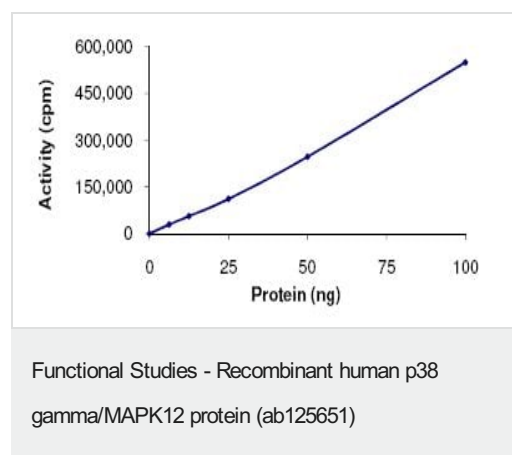
## 関連情報

機能	Responds to activation by environmental stress and pro-inflammatory cytokines by phosphorylating downstream targets. Plays a role in myoblast differentiation and also in the down-regulation of cyclin D1 in response to hypoxia in adrenal cells suggesting MAPK12 may inhibit cell proliferation while promoting differentiation.
組織特異性	Highly expressed in skeletal muscle and heart.
配列類似性	Belongs to the protein kinase superfamily. CMGC Ser/Thr protein kinase family. MAP kinase subfamily. Contains 1 protein kinase domain.
ドメイン	The TXY motif contains the threonine and tyrosine residues whose phosphorylation activates the MAP kinases.
翻訳後修飾	Dually phosphorylated on Thr-183 and Tyr-185, which activates the enzyme.
細胞内局在	Cytoplasm. Mitochondrion. Mitochondrial when associated with SH3BP5.

## 画像



SDS-PAGE analysis of ab125651.



The specific activity of ab125651 was determined to be 220 nmol/min/mg by Kinase Assay.

**Please note:** All products are "FOR RESEARCH USE ONLY. NOT FOR USE IN DIAGNOSTIC PROCEDURES"

### **Our Abpromise to you: Quality guaranteed and expert technical support**

---

- Replacement or refund for products not performing as stated on the datasheet
- Valid for 12 months from date of delivery
- Response to your inquiry within 24 hours
  
- We provide support in Chinese, English, French, German, Japanese and Spanish
- Extensive multi-media technical resources to help you
- We investigate all quality concerns to ensure our products perform to the highest standards

If the product does not perform as described on this datasheet, we will offer a refund or replacement. For full details of the Abpromise, please visit <https://www.abcam.co.jp/abpromise> or contact our technical team.

### **Terms and conditions**

---

- Guarantee only valid for products bought direct from Abcam or one of our authorized distributors